



Icknield Close, Wendover
Buckinghamshire HP22 6HG

TIM RUSS
& COMPANY



Icknield Close Wendover Bucks HP22 6HG

Present in excellent condition throughout this extended semi detached family home set in this central Wendover location.

Price on Application



The Property

Set in this central Wendover location an extended semi-detached home. Offered in excellent order throughout with accommodation in brief comprising – an entrance hallway, a 21ft living room, dining room, breakfast room and a fitted kitchen. Access to the rear garden is from both the breakfast room and the dining room. To the first floor are three good sized bedrooms. The principal bedroom is set in the extended part of the property so offers the additional space to allow for a dressing room and an en-suite shower room, there is a vaulted ceiling and sky light so is full of natural light. Also on the first floor is a family bathroom with a shower over the corner bath.

Outside

Laid across the rear of the home is a large, paved patio. The garden extends approximately 90ft and is south-westerly facing. The remaining garden is laid to lawn with a 'play' area to the rear. The front has a loose stone area providing off street parking and a shared driveway leading to the brick-built garage.

Planning approved for a further side and rear extension – Planning number 21/02612/APP

Location

Wendover is a most attractive thriving village set at the foot of the Chiltern Hills just to the south east of the county town of Aylesbury. Road access to London could either be via the A413 and M40 or the A41 and M1. The village has a railway station, at the top of the High Street on the Chilterns Railway Line providing commuter services to Marylebone in 45-50 minutes. It also offers good day to day shopping facilities and has a regular weekly market on Thursdays, Health Centre, Dentists, Library. There are schools in the village for all ages and the renowned Grammar School and High Schools are in Aylesbury together with the Sir Henry Floyd co-ed Grammar School. There are many opportunities for recreation close to the village including Wendover Woods and Coombe Hill and most sports are available in the Aylesbury Vale.

Directions

From our Wendover office proceed down the High Street to the mini roundabout and bear left along the Aylesbury Road. At the next roundabout turn right into Wharf Road and then take the second turning on the right into Icknield Close and No.4 is on the right.

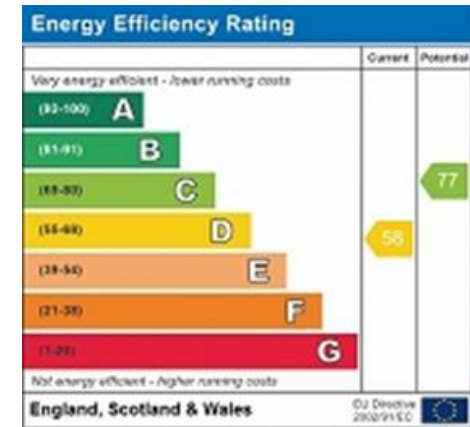
Post code for SatNav: HP22 6HG

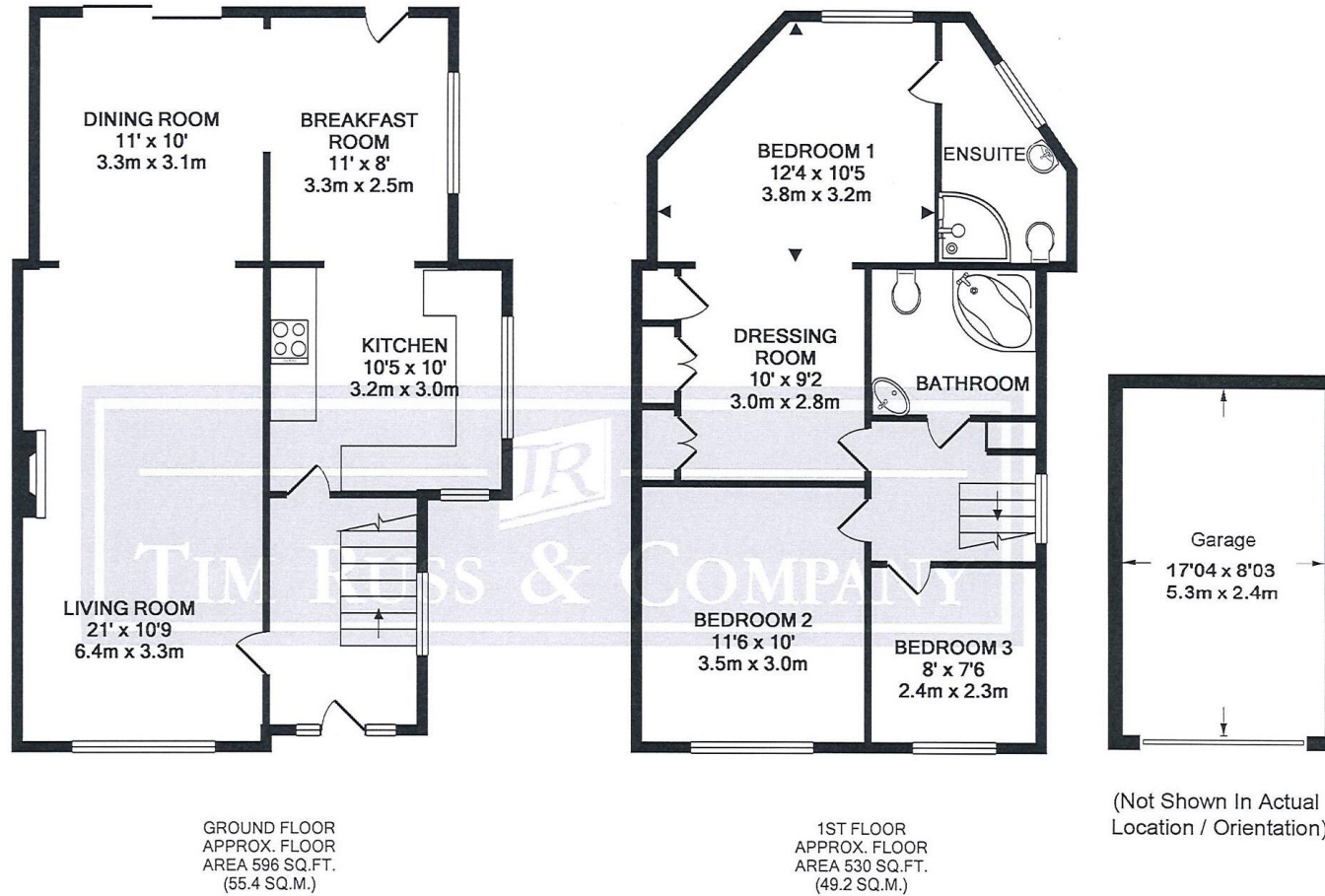
Viewings

Strictly by appointment only.

Mortgage

Contact your local Tim Russ & Company office who can introduce you to their professional financial advisor.





TOTAL APPROX. FLOOR AREA 1126 SQ.FT. (104.6 SQ.M.)
Made with Metropix ©2013

4 Chiltern Court, Back Street, Wendover, Bucks HP22 6EP

T: 01296 621177

E: wendover@timruss.co.uk

www.timruss.co.uk

TIM RUSS
& COMPANY