



Thornton Crescent, Wendover
Buckinghamshire, HP22 6DG



Thornton Crescent Wendover HP22 6DG

Presented in excellent order throughout
this extended two bedroom semi-
detached bungalow situated close to
Wendover High Street

£500,000



The Property

Located on this popular Crescent in Wendover, ideal for those seeking a level walk to the High Street. The bungalow underwent a full refurbishment approximately 10 years ago which also included a full width rear extension. The accommodation comprises; an open and inviting entrance hallway, two bedrooms with an en-suite cloakroom to bedroom one, bathroom with a shower over the bath. Sitting room opening onto a conservatory, a spacious kitchen/diner fitted with a variety of storage cupboards and draws and ample space for washing machine, upright fridge/freezer, and cooker. The central heating was also updated with a combination gas fired boiler located in the lost space.

Outside

The landscaped rear garden has been kept by the current vendor in pristine condition. There is a good-sized paved patio across the rear of the home with a paved path leading to the rear of the garden. The central lawn is bordered on one side by both raised and ground flower beds. There are three timber sheds one at the front and the



other at the rear of the garden and a greenhouse. The front has both a loose stone area and a hard standing driveway providing ample off-road parking.

Location

Wendover is a most attractive thriving village set at the foot of the Chiltern Hills just to the southeast of the county town of Aylesbury. Road access to London could either be via the A413 and M40 or the A41 and M1. The village has a railway station, at the top of the High Street on the Chilterns Railway Line providing commuter services to Marylebone in 45-50 minutes. It also offers good day to day shopping facilities and has a regular weekly market on Thursdays, Health Centre, Dentists, Library. There are schools in the village for all ages and the renowned Grammar School and High Schools are in Aylesbury together with the Sir Henry Floyd co-ed Grammar School. There are many opportunities for recreation close to the village including Wendover Woods and Coombe Hill and most sports are available in the Aylesbury Vale.



Directions

From our Wendover office proceed up the High Street and turn right into Dobbins Lane. Take the fourth turning on the left into Thornton Crescent, and the property will be found on the right-hand side.

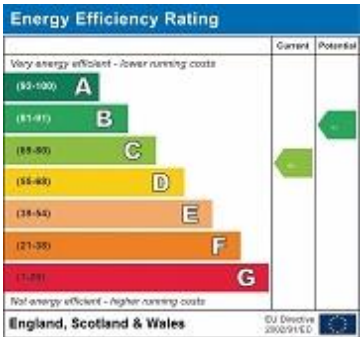
Post code for SatNav: HP22 6DG

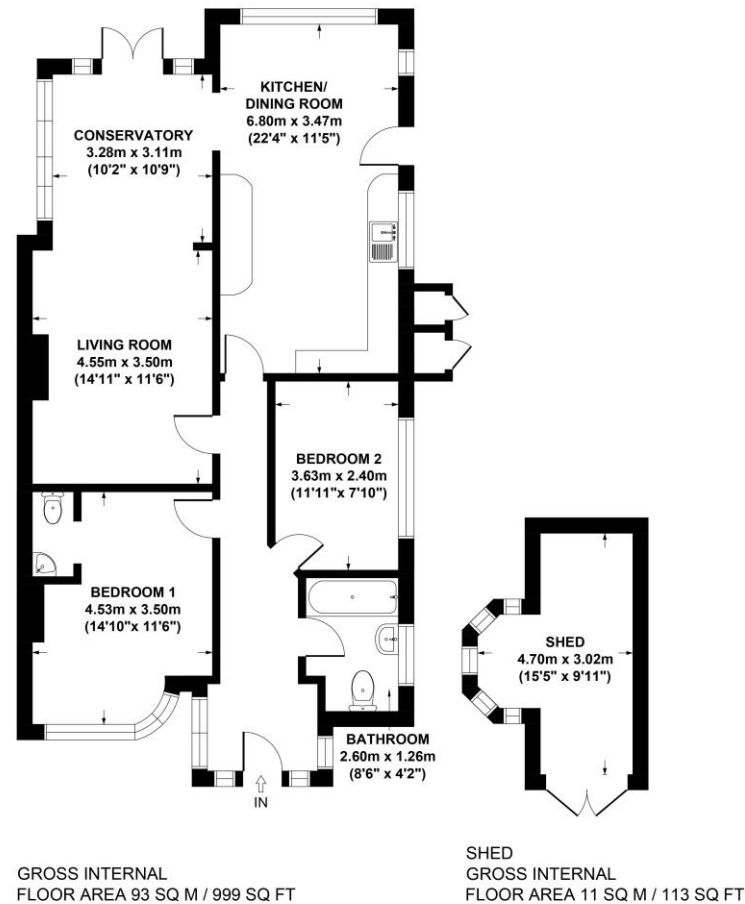
Viewings

Strictly by appointment only.

Mortgage

Contact your local Tim Russ & Company office who can introduce you to their professional financial advisor.





THORNTON CRESCENT, WENDOVER, HP22 6DG
APPROX. GROSS INTERNAL FLOOR AREA 104 SQ M / 1112 SQ FT
 FLOOR PLAN IDENTIFICATION PURPOSES ONLY -NOT TO SCALE

4 Chiltern Court, Back Street, Wendover, Bucks HP22 6EP

T: 01296 621177

E: wendover@timruss.co.uk

www.timruss.co.uk

TIM RUSS
 & COMPANY

Tim Russ & Company for themselves and for the Vendors or Lessors of this property whose agents they are give notice that: (1) The particulars and floor plans are set out as a general outline only for the guidance of intending purchasers or lessees, and do not constitute part of, an offer or contract. (2) All descriptions, dimensions, references to condition and necessary permissions for use and occupation, and other details are given in good faith and are believed to be correct but any intending purchasers or tenants should not rely on them as statements or representations of fact but must satisfy themselves by inspection or otherwise as to the correctness of each of them. (3) No person in the employment of Tim Russ & Company has any authority to make or give any representation or warranty whatever in relation to this property. (4) They do not hold themselves responsible for any expense incurred in viewing the same or any liability in respect of abortive journeys. Terms quoted are subject to contract. Floor Plan copyright of Tim Russ & Company.