



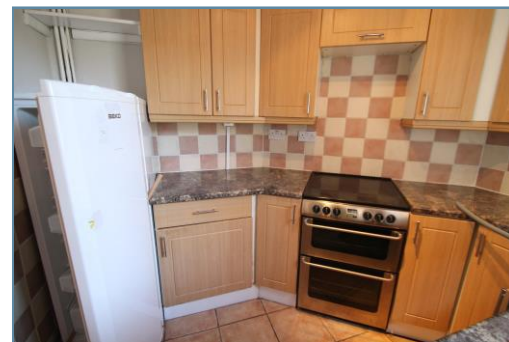
Totteridge Avenue

High Wycombe

HP13 6XG

Monthly Rental Of £1,000

- WELL PRESENTED END-TERRACE HOUSE
- Available Early July Unfurnished
- Near to the A40, 5/6 Minutes Walk From 25 Minute London Trains
- 2 Double Bedrooms, 2 Reception Rooms
- Rear Garden
- EPC E



T: 01494 358358

E: lettings@wyeres.co.uk

W: www.wyeres.co.uk

Totteridge Avenue High Wycombe HP13 6XG

LOCATION FACTS

Approximately one mile of East of High Wycombe town centre. The station, with 25 minute London Marylebone trains, is just 5/6 minutes walk. A similar distance is the A40 London Road, along which operate frequent Heathrow buses. Buses to town are closeby, local facilities are quickly reached and the 50 acre Rye park is an easy walk. Two M40 junctions are a few minutes drive.

DIRECTIONS

In an approach from High Wycombe centre, leave on the A404 towards Amersham and directly above the station turn right in to Totteridge Road. At the crossroads turn right in to Totteridge Avenue and the property can be found on the left.

