



St. Hughs Avenue, High Wycombe, Buckinghamshire, HP13 7UA



*Being sold as a 35% share this well presented two double bedroom ground floor apartment to the North East of High Wycombe with a private terrace.*

| Shared Ownership 35% Share | Communal Entrance Hall | Secure Entry Phone System | Entrance Hall | Good Size Lounge/Dining Room | Private Terrace | Fitted Kitchen | Two Double Bedrooms | Bathroom | Gas Central Heating To Radiators | Double Glazed Windows | Resident Car Parking | Long Lease |

A modern ground floor apartment which is offered for sale in good decorative order. A security entry system gives access to a communal hallway with front door to the entrance hall. (Please note that if accessing from the rear of the development there are two flights of stairs.) There are two double bedrooms and a white bathroom suite with overhead shower. The lounge/dining room is a good size with double glazed doors opening onto a private terrace. The kitchen is well equipped with a built-in gas hob and electric oven. The property is double glazed throughout and has gas fired central heating to radiators. There is residents car parking.

## Price... Shared Ownership £77,000

Leasehold

Energy Efficiency Rating		
	Current	Potential
Very energy efficient - lower running costs		
A (92+)		
B (81-91)		
C (69-80)	81	81
D (55-68)		
E (39-54)		
F (21-38)		
G (1-20)		
Not energy efficient - higher running costs		
England & Wales	EU Directive 2002/91/EC	

www.epc4u.com





## LOCATION

Approximately 1.2 miles from High Wycombe. Close at hand are a post office, petrol station and corner shop within a short walk. There is a bus stop to the town centre very close by, offering 25-minute London Marylebone trains as well as direct links to Oxford and Birmingham. The town offers extensive shopping facilities, numerous restaurants and leisure facilities to include a cinema, theatre and bowling alley. Surrounding countryside is close by with the large Kingsmead and Rye parks about a 5-minute drive. Two M40 junctions are less than ten minutes drive. There are highly regarded schools and a doctors surgery within walking distance.

## DIRECTIONS

From the town centre ascend the A404 Amersham Hill and continue to the top and at the second mini-roundabout turn right into Totteridge Lane. Continue along Totteridge Lane over two mini-roundabouts, at the third turn left into Hicks Farm Rise. Follow the road down and take the first turning on the right into St Hughs Avenue. Continue along the road and the property can be found on the left-hand side.

## ADDITIONAL INFORMATION

Leasehold; 83 Years remaining - vendor has begun the process for a lease extension & 172 year lease will be granted upon completion of sale: Rent on 35% share is £370.99 Per month: Service Charge; £155.17 Per month.

## COUNCIL TAX

Band C

## EPC RATING

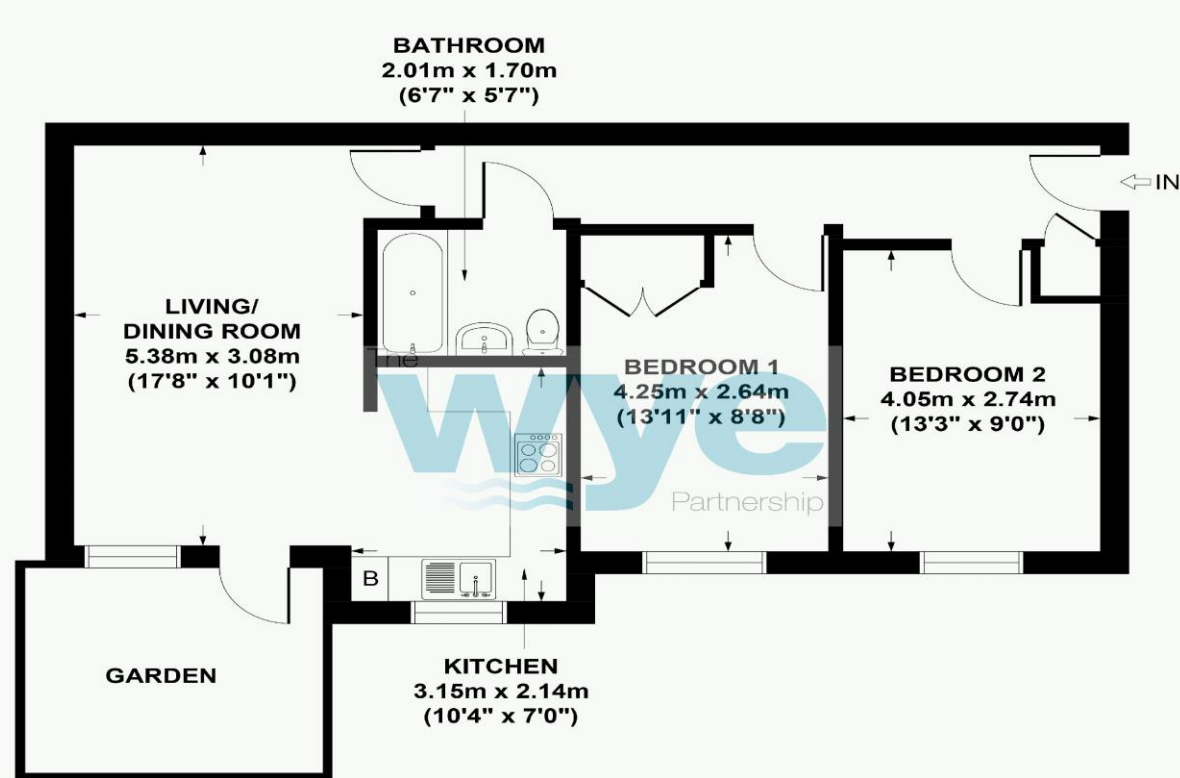
B

## MORTGAGE

Contact your local Wye Residential office who can introduce you to their Independent Financial Adviser

*Whilst we endeavour to make our sales details accurate and reliable they should not be relied upon as statements of representation of fact and do not constitute any part of an offer or contract.*





GROSS INTERNAL  
FLOOR AREA 61 SQ M / 656 SQ FT

**ST HUGHES AVENUE, HIGH WYCOMBE, HP13 7TZ**  
**APPROX. GROSS INTERNAL FLOOR AREA 61 SQ M / 656 SQ FT**

FLOOR PLAN IDENTIFICATION PURPOSES ONLY -NOT TO SCALE

Wye House, 15 Crendon Street, High Wycombe Bucks, HP13 6LE  
01494 451 300  
wycombe@wyeres.co.uk  
wyeres.co.uk

The **wye** Partnership