



Whitehouse Mansions

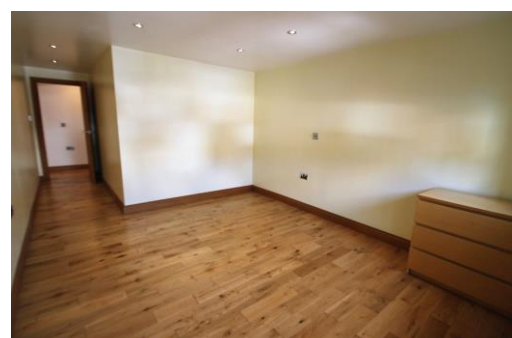
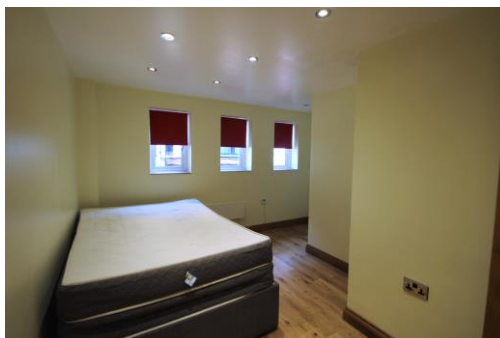
21b High Street

High Wycombe

HP11 2BE

Monthly Rental Of £1,350

- Two Bedroom Town Centre Apartment
- Part of the Redevelopment of a Grade II Listed Building
- 25 Minute London Trains
- Superb First Floor Home Unfurnished, Security Entrance
- Spacious 26' Sitting-Dining-Kitchen, 2 Double Bedrooms.
- EPC Rating: E & Council Tax Band: C



T: 01494 358358

E: lettings@wyeres.co.uk

W: www.wyeres.co.uk

Whitehouse Mansions 21b High Street High Wycombe HP11 2BE

PROPERTY FACTS

First Floor Apartment | Two Double Bedrooms | Spacious Kitchen and Reception Area | Modern Bathroom | Central High Wycombe Location | Easy Walk to High Wycombe Station | EPC Rating: E | Council Tax Band: C

Available late June, a two bed apartment situated in a town centre Grade II Listed Building; 25 minute London trains and frequent Heathrow buses 3 minutes walk. The accommodation of this first floor apartment is contemporary - oak floors, electric heating, sealed units and excellent fittings. Impressive main entrance with chandeliers and Victorian style tiled flooring. CCTV and video entry system. Entrance hall, 26' sitting-dining-kitchen - integrated appliances to the kitchen. 2 double bedrooms, elegant bathroom.

LOCATION FACTS

In the old town centre, among some of High Wycombe's finest buildings, the Whitehouse Mansion property was built in 1590 as an opulent home; subsequently used for commercial purposes and now largely returned to residences with a sensitively constructed new build behind. The railway station, with 25 minute London Marylebone trains, is just three minutes walk and frequent Heathrow buses are even closer. Junction 4 of the M40 lies less than a mile South of the town, as does the new Handycross Hub, providing improved local and national bus and coach services. The 50 acre Rye park is five minutes walk and Hughenden Park is little more than fifteen minutes walk.

DIRECTIONS

The Whitehouse Mansion Apartments lie at the Eastern end of the High Street, opposite to the old library gardens, looking South towards the grounds of the renowned Abbey School.

