



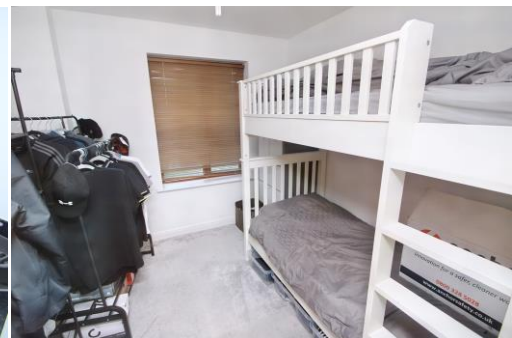
## John North Close

High Wycombe

HP11 1FF

Monthly Rental Of £1,400

- Spacious and Well Presented Top Floor Apartment
- Master Bedroom with En Suite Shower Room
- Lounge/Dining Room with East Facing Balcony
- Fitted Kitchen, Gas Central Heating and Double Glazing
- Second Bedroom, Guest Bathroom. Allocated Parking
- EPC Rating: B Council Tax Band: C



T: 01494 358358

E: [lettings@wyeres.co.uk](mailto:lettings@wyeres.co.uk)

W: [www.wyeres.co.uk](http://www.wyeres.co.uk)

# Vaughan House John North Close High Wycombe HP11 1FF

## PROPERTY FACTS

| Top Floor (Third Floor) Modern Apartment | Sought After Location | Communal Hall With Security Entry System | Entrance Hall | Lounge/Dining Room with East Facing Balcony | Fitted Kitchen | Master Bedroom With En Suite Shower Room | Second Bedroom | Guest Bathroom | Gas Central Heating | Double Glazing | Allocated Courtyard Parking | Additional Guest Parking With Permits | Viewing Strongly Recommended |

A well appointed and well presented top floor apartment situated in a highly sought after location. This light and airy two bedroom apartment has an east facing balcony from the lounge/dining room, a fitted kitchen, en suite shower room to master bedroom and additional guest bathroom and benefits from reserved parking in a gated courtyard with additional permit parking for visitors. The property has double glazed windows and gas central heating and is situated close to the Handy X Hub with Leisure Centre & Waitrose supermarket. Available now.

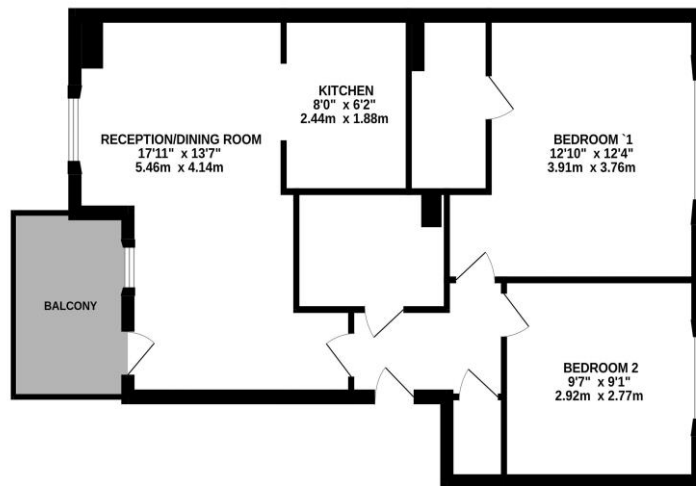
## LOCATION FACTS

Located at the Handy X Hub with a Leisure Centre and Waitrose both within walking distance. Junction 4 of the M40 motorway is within a minutes drive and the town centre and station is just 1 mile away. There are additional supermarkets, a department store, cinema and restaurants all within very easy reach.

## DIRECTIONS

From the multi roundabout system in High Wycombe, ascend Marlow Hill, pass through the first two sets of traffic lights and on reaching the third set, filter left and then left again into Fair Ridge and continue straight on into John North Close. The apartment will be found on the left.

670 sq.ft. (62.2 sq.m.) approx.



TOTAL FLOOR AREA : 670 sq.ft. (62.2 sq.m.) approx.  
Whilst every attempt has been made to ensure the accuracy of the floorplan contained herein, measurements of doors, windows, rooms and any other items are approximate and no responsibility is taken for any error, omission or mis-statement. This plan is for illustrative purposes only and should be used as such by any prospective purchaser. The services, systems and appliances shown have not been tested and no guarantee as to their operability or efficiency can be given.  
Made with Mergen 12/23

