



Whitehouse Mansions

21b High Street

High Wycombe

HP11 2BE

Monthly Rental Of £1,295

- Two Double Bedrooms
- Modern Bathroom
- Expansive Kitchen/Diner & Living Space
- 25 Minute London Trains and Heathrow Buses Just a Short Walk
- Benefits from Private Decked Terrace
- EPC Rating: E & Council Tax Band: C



T: 01494 358358

E: lettings@wyeres.co.uk

W: www.wyeres.co.uk

Whitehouse Mansions 21b High Street High Wycombe HP11 2BE

PROPERTY FACTS

Two Double Bedrooms | Modern Bathroom | Kitchen/Diner & Living Area | Private Decked Area | Integrated Appliances | Council Tax Band: C | EPC Rating: E

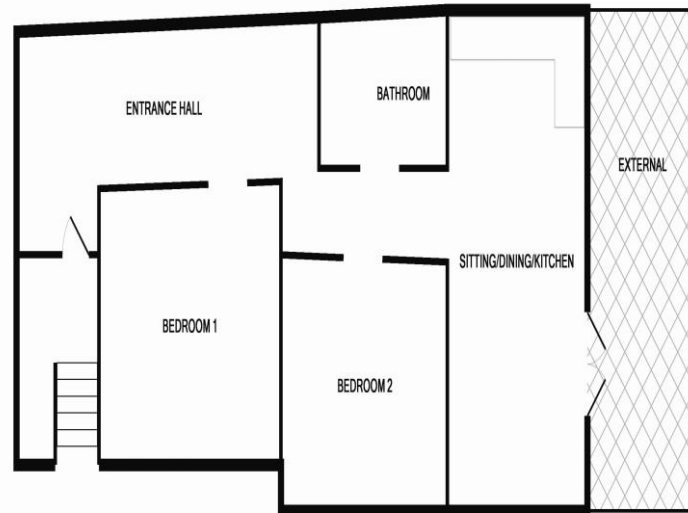
Available early May, unfurnished - An excellent ground floor, two bedroom apartment. Imposing main entrance with chandeliers and Victorian style tiled flooring. CCTV and video entry system. Electric heating, sealed units, oak flooring. Entrance hall, 19' x 10' sitting-dining-kitchen opening to a 19' x 7'6 private decked area - integrated appliances to the kitchen. 2 double bedrooms, contemporary bathroom.

LOCATION FACTS

In the old town centre, among some of High Wycombe's finest buildings, the Whitehouse Mansion property was built in 1590 as an opulent home; subsequently used for commercial purposes and now largely returned to residences with a sensitively constructed new build behind. The railway station, with 25 minute London Marylebone trains, is just three minutes walk and frequent Heathrow buses are even closer. Junction 4 of the M40 lies less than a mile South of the town, as does the new Handycross Hub, providing improved local and national bus and coach services. The 50 acre Rye park is five minutes walk and Hughenden Park is little more than fifteen minutes walk.

DIRECTIONS

The Whitehouse Mansion Apartments lie at the Eastern end of the High Street, opposite to the old library gardens, looking South towards the grounds of the renowned Abbey School. Wye Lettings office occupies part of The Whitehouse Mansion building and have keys available for viewings.



Measurements are approximate. Not to scale. Illustrative purposes only.
Made with Metropix 02/16

