



 litchfields

Highpoint, North Hill, Highgate Village, N6

£875,000

Share of Freehold

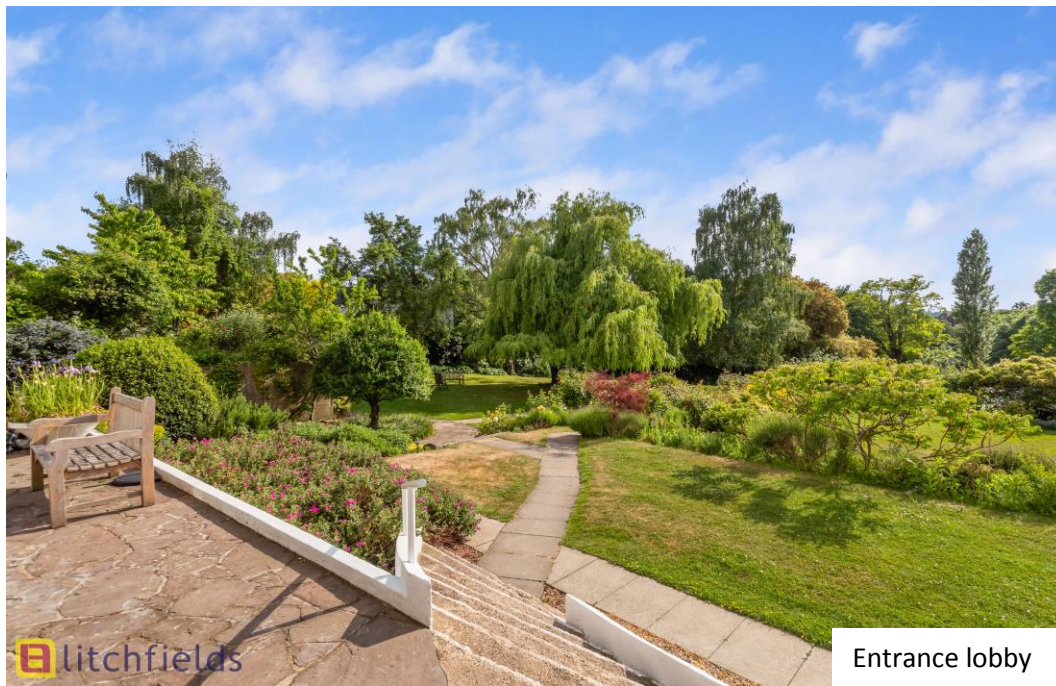
 litchfields

44 highgate high street, highgate village, london, n6 5hx
telephone 020 8348 8000 facsimile 020 8348 8232
email highgate@litchfields.com web litchfields.com

offices also in hampstead garden suburb



We are pleased to offer for sale this stylish two-bedroom second floor apartment (with lift) in a prime position within this sought after landmark building, designed by Berthold Lubetkin in the 1930s and listed as Grade I by English Heritage in recognition of its status as one of the finest Modernist buildings in London. This super flat, has been recently re-decorated with new carpets. The accommodation comprises a light filled reception room, with super views and features the innovative concertina folding windows that are a signature of the building and access to a small balcony with far reaching westerly views. There are two double bedrooms, kitchen, bathroom, study, and utility/storage room. Further benefits include, ample built-in storage, resident building manager and concierge service, basement storage, beautiful and extensive communal gardens, 2 all-weather tennis courts, heated outdoor pool and first come first serve residents parking. Highpoint is very conveniently located to allow fast access to Highgate tube and Woods, historic Highgate Village and Waterlow Park and the delights of Kenwood and the Heath. Sold Chain Free and with a Share of the Freehold. EPC Rating: D



Entrance lobby



View from balcony



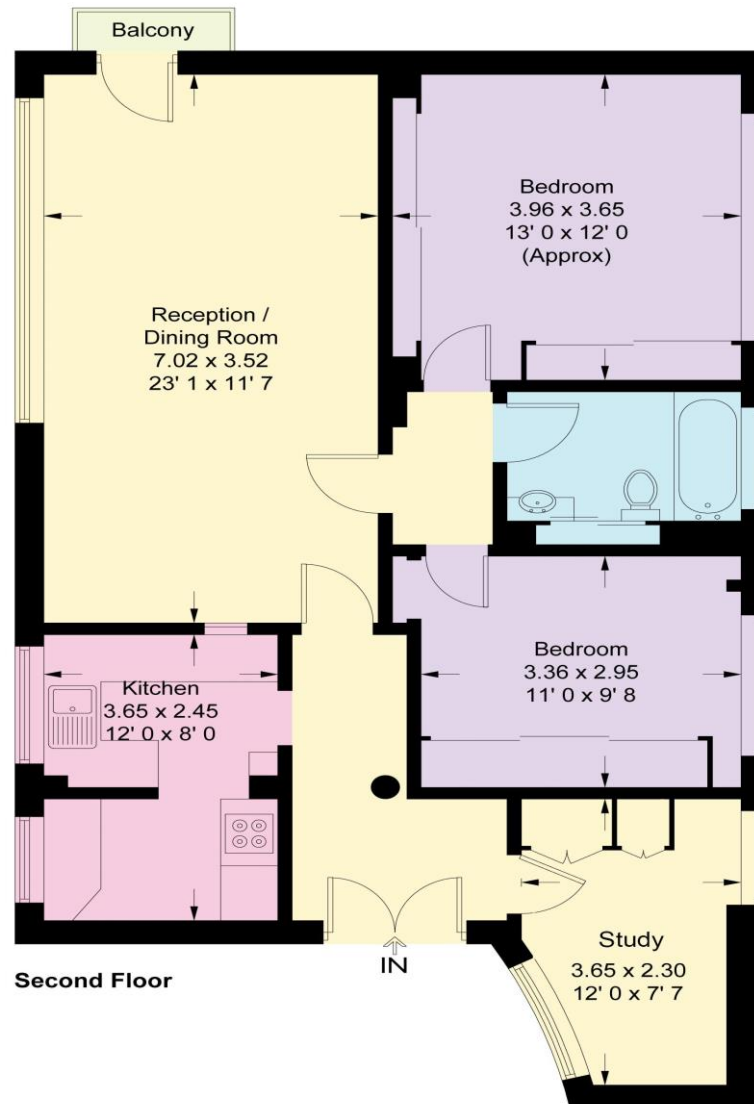
Much admired Grade I listed Modernist apartment block
Highgate Village location
Recently repainted throughout and new carpets fitted
Second floor (with lift)
Spacious, light filled reception with superb views
2 double bedrooms, kitchen & bathroom
Study & utility/storage area
Beautiful communal gardens, tennis courts and swimming pool
Resident building manager and porters
Close to tube, Woods, Village and Hampstead Heath
EPC Rating: D





High Point

Approximate Gross Internal Area = 895 sq ft / 83.2 sq m



This plan is not to scale and must be used as layout guidance only. All measurements and areas are approximate and should not be relied upon to provide accurate information. This plan must not be relied upon when making property valuations, design considerations or any other such relevant decisions. We accept no responsibility or liability (whether in contract, tort or otherwise) in relation to any loss whatsoever arising from or in connection with any use of this plan or the adequacy, accuracy or completeness of it or any information within it.