



South Grove House, Highgate Village, N6

Guide Price £999,950 Share of Freehold



44 highgate high street, highgate village, london, n6 5hx

telephone 020 8348 8000 facsimile 020 8348 8232

email highgate@litchfields.com web litchfields.com

offices also in hampstead garden suburb



We are pleased to offer this spacious 3 bedroom apartment, situated on the second floor (with lift) of a very well maintained and sought after purpose built block in the heart of Highgate Village. Comprising a reception, master bedroom with en-suite shower room and ample storage a separate family bathroom and two further bedrooms. There is also a fully fitted kitchen with access to the service balcony. The block offers residents-only off-street parking, day porter and communal gardens and there is the added benefit of a private garage with a mezzanine level, providing both car parking and ample extra storage space. Located at the end of South Grove the flat overlooks trees both front and back, is well positioned for quick access to all the amenities of Highgate High Street, transport links to central London and the City and the delights of Waterlow Park, Kenwood and the Heath on the doorstep. EPC - C



Chain Free in Village location
3 bedroom 2nd floor flat (lift)
Large Reception Room
Fully Fitted Kitchen
Master Bedroom with ensuite Shower room
2 further Bedrooms
Bathroom
Good Views
Mezzanine Garage with Storage
Close to transport and shops
EPC - C

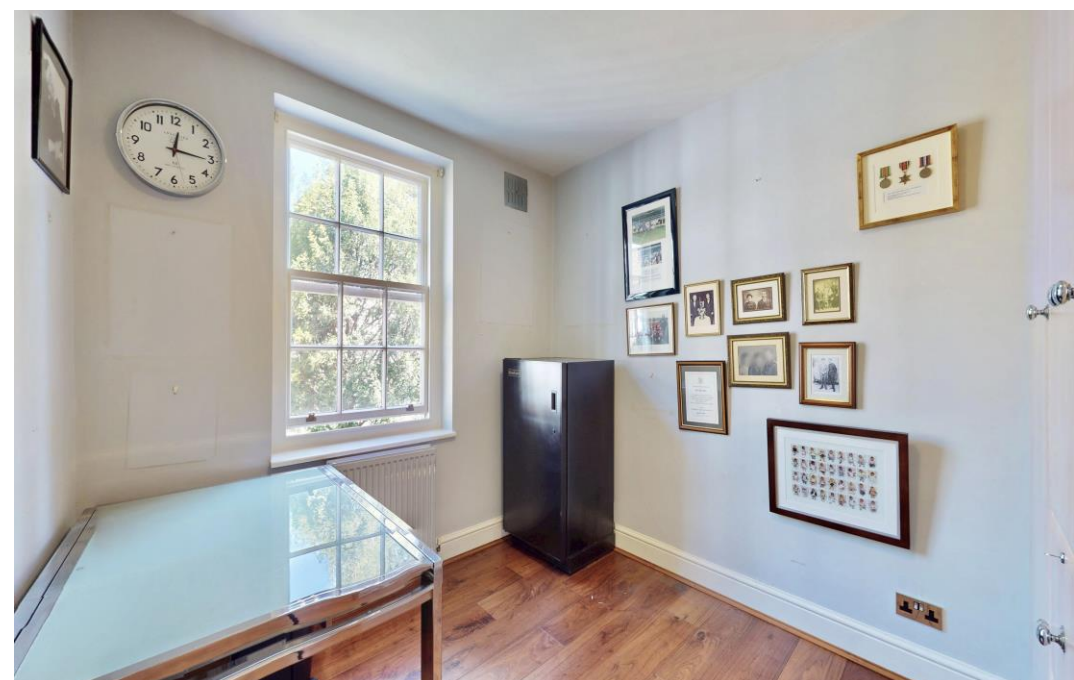




Master Bedroom



Master Bedroom En-suite Shower

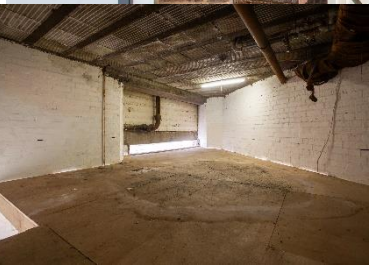
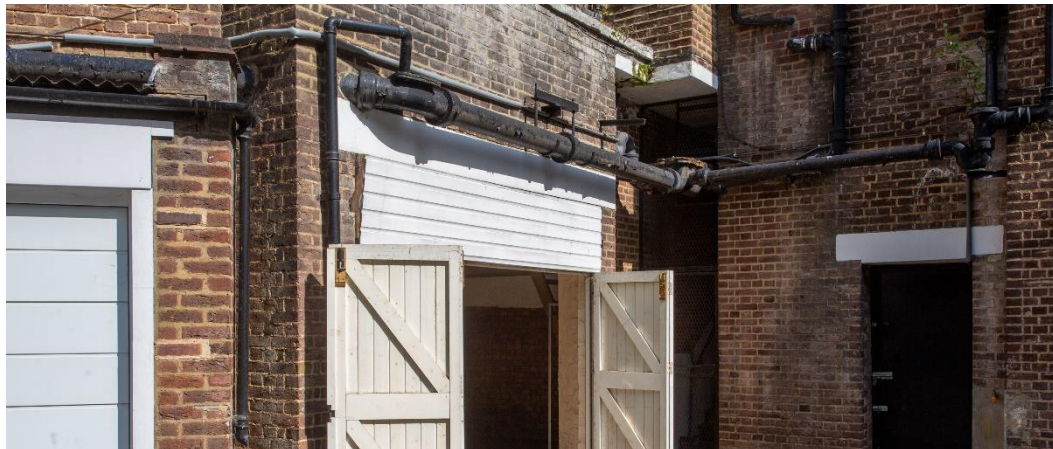


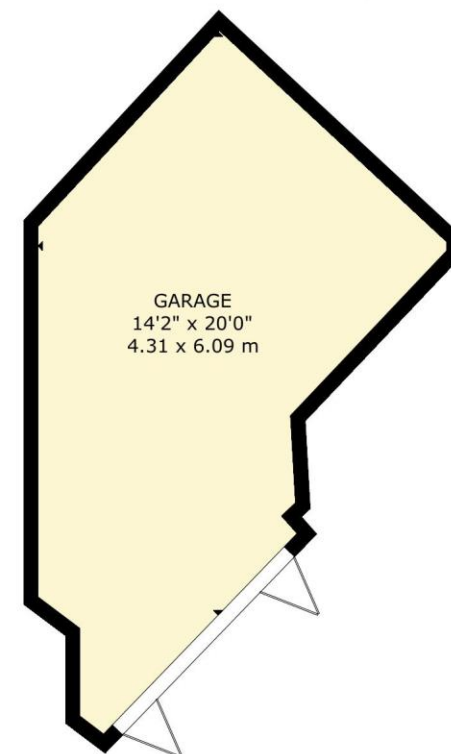
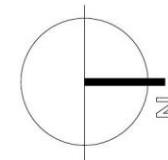


Communal Garden



Rear Views





SECOND FLOOR

GROSS INTERNAL AREA
TOTAL: 99 m²/1,063 sq.ft
SECOND FLOOR: 99 m²/1,063 sq.ft
EXCLUDED AREAS: GARAGE: 17 m²/188 sq.ft
SIZE AND DIMENSIONS ARE APPROXIMATE, ACTUAL MAY VARY