



North Road, Highgate Village, N6

£1,350,000 Share of Freehold



44 highgate high street, highgate village, london, n6 5hx

telephone 020 8348 8000 facsimile 020 8348 8232

email highgate@litchfields.com web litchfields.com

offices also in hampstead garden suburb



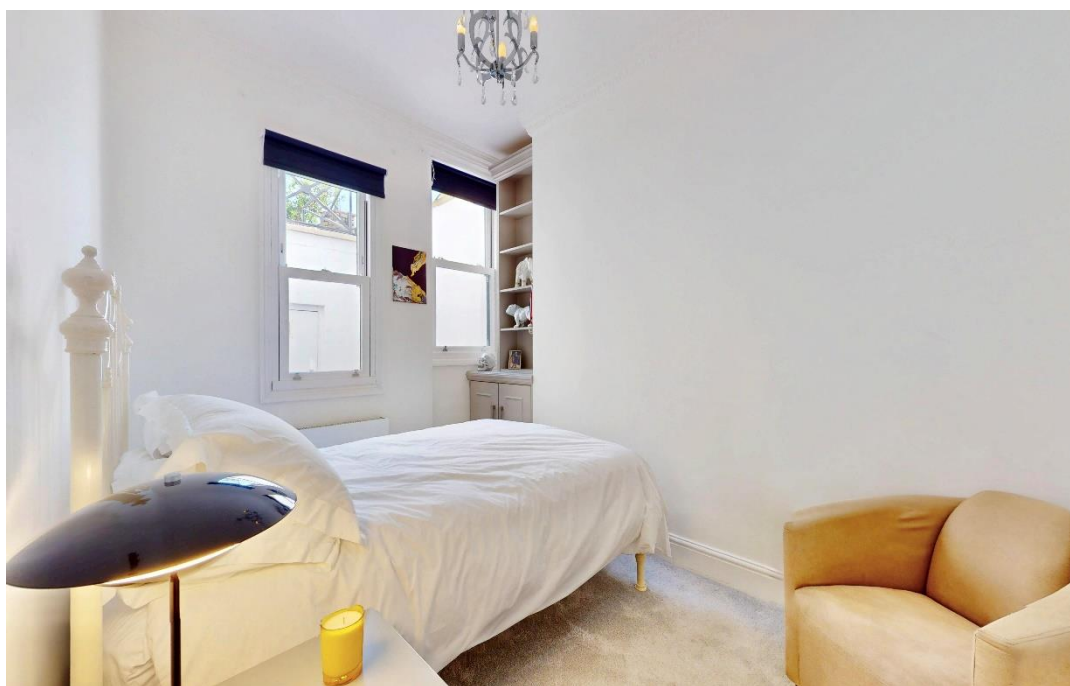
We are pleased to offer this immaculately presented 2 double bedroom, 2 bathroom garden flat on the lower ground floor of an elegant period conversion in the heart of Highgate Village. Having been completely refurbished by the current owner this super flat provides 1184 square feet of stylish living and entertaining space including a spacious reception room with feature fireplace and direct access to a private garden, master bedroom with luxury en-suite bath room a second double bedroom, separate shower room and a fully integrated kitchen. The apartment also benefits from a secure, allocated off street parking space and storage cellar. North Road is ideally located to take advantage of all the amenities of historic Highgate Village, with fast access to Highgate tube, Woods, the Village and the delights of Kenwood & Hampstead Heath a stone's throw away. EPC - C

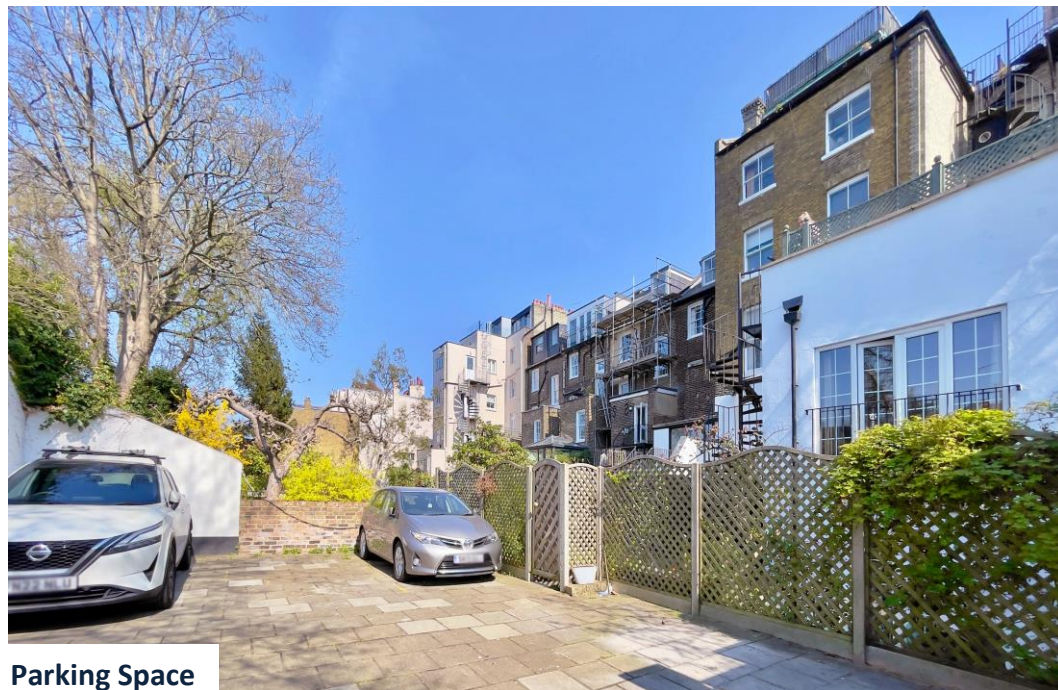
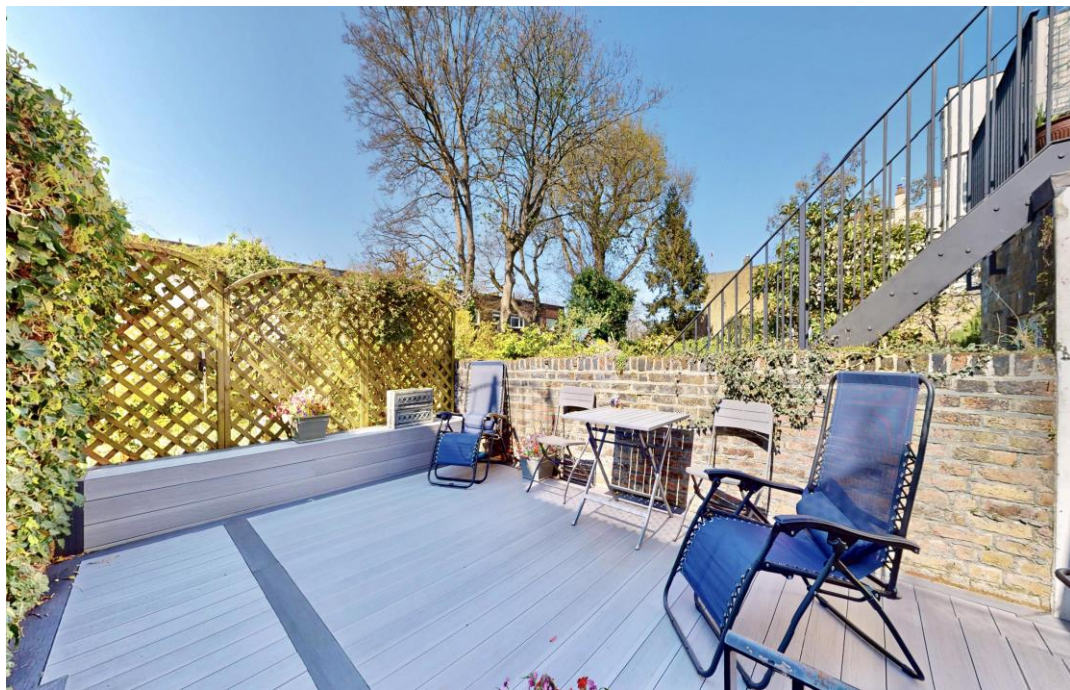


Heart of Highgate Village
Immaculate, recently refurbished Garden Flat
Reception room
Master bedroom with luxury en-suite bath room
Second double bedroom
Separate shower room
Integrated kitchen
Private garden and storage cellar
Secure, allocated off street parking
Stone's throw from amenities on Highgate High Street
Close to Waterlow Park, Highgate tube, Woods
Quarter of a mile from Kenwood and Hampstead Heath
EPC - C

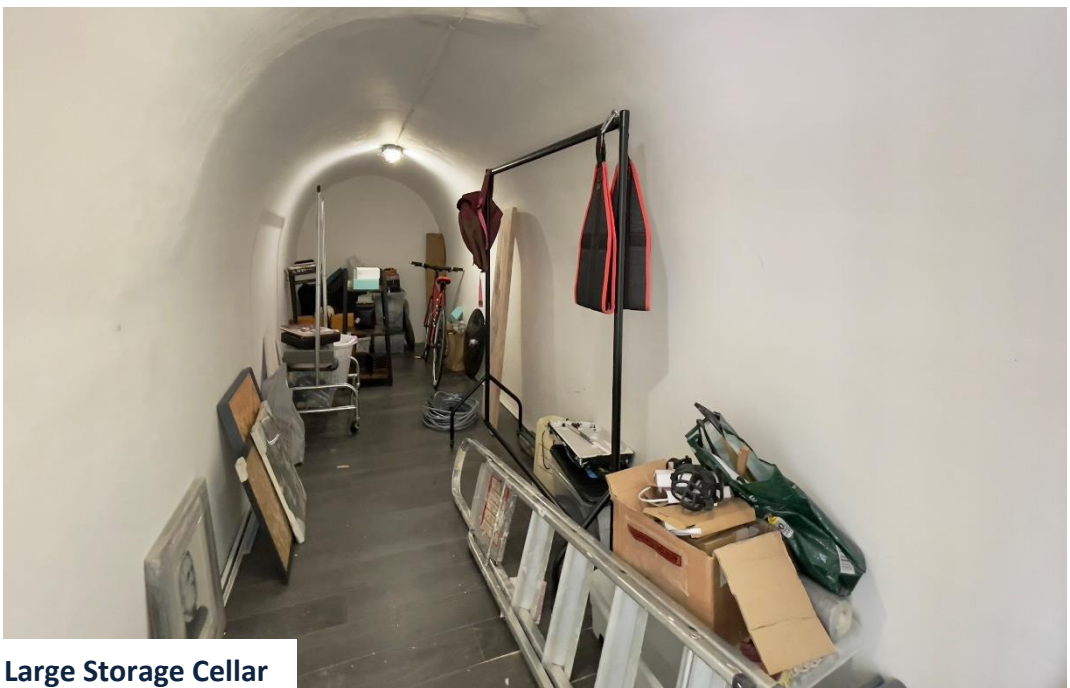


En-suite Bathroom



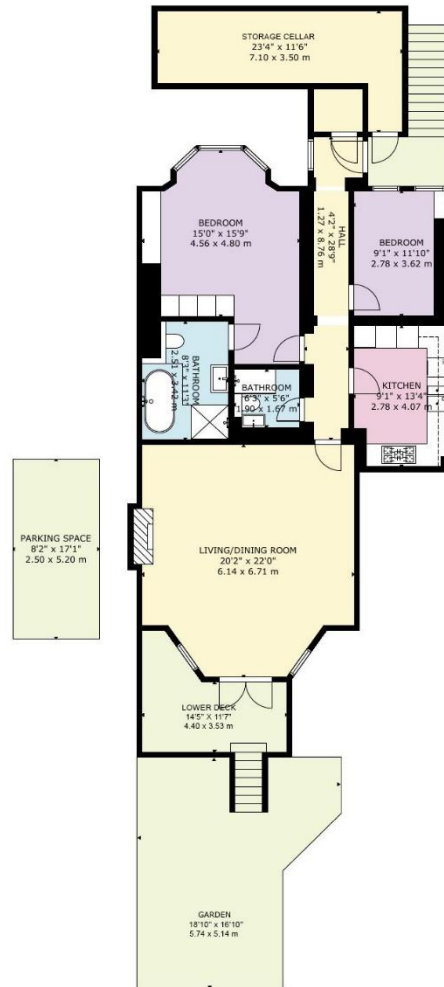
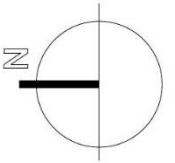


Parking Space



Large Storage Cellar





GROSS INTERNAL AREA
TOTAL: 111 m²/1,198 sq ft
LOWER GROUND FLOOR: 111 m²/1,198 sq ft
EXCLUDED AREAS: STORAGE: 16 m²/175 sq ft, PARKING SPACE: 13 m²/140 sq ft, PORCH: 10 m²/111 sq ft
SIZE AND DIMENSIONS ARE APPROXIMATE, ACTUAL MAY VARY

LOWER GROUND FLOOR