



Parkview Mansions, Highgate Village, N6

£725,000 Share of Freehold

 **litchfields**
 **litchfields**

44 highgate high street, highgate village, london, n6 5hx

telephone 020 8348 8000 facsimile 020 8348 8232

email highgate@litchfields.com web litchfields.com

offices also in hampstead garden suburb



LOCATION! LOCATION ! LOCATION! We are pleased to offer for sale a beautifully presented 2 bedroom lower ground floor apartment within an elegant and well-maintained Edwardian mansion block in the very heart of historic Highgate Village. This stylish home features a spacious, open plan kitchen-dining and living space, 2 double bedrooms and a luxury family bathroom. There is a useful basement storage area, bike storage in the rear courtyard and the benefit of a small patio area. Located directly opposite Waterlow Park and all the amenities of the High Street and transport links to London and the City with Archway and Highgate tube stations close by. There is the additional attraction of Kenwood and Hampstead Heath as well as sought after schools on the doorstep. EPC- C



Edwardian Masion Block apartment

Highgate Village Location

Open-plan kitchen-reception

2 bedrooms

Family bathroom

Patio area

Storage basement area

Courtyard bike storage

Set in the centre of Highgate Village

Directly Opposite Waterlow Park

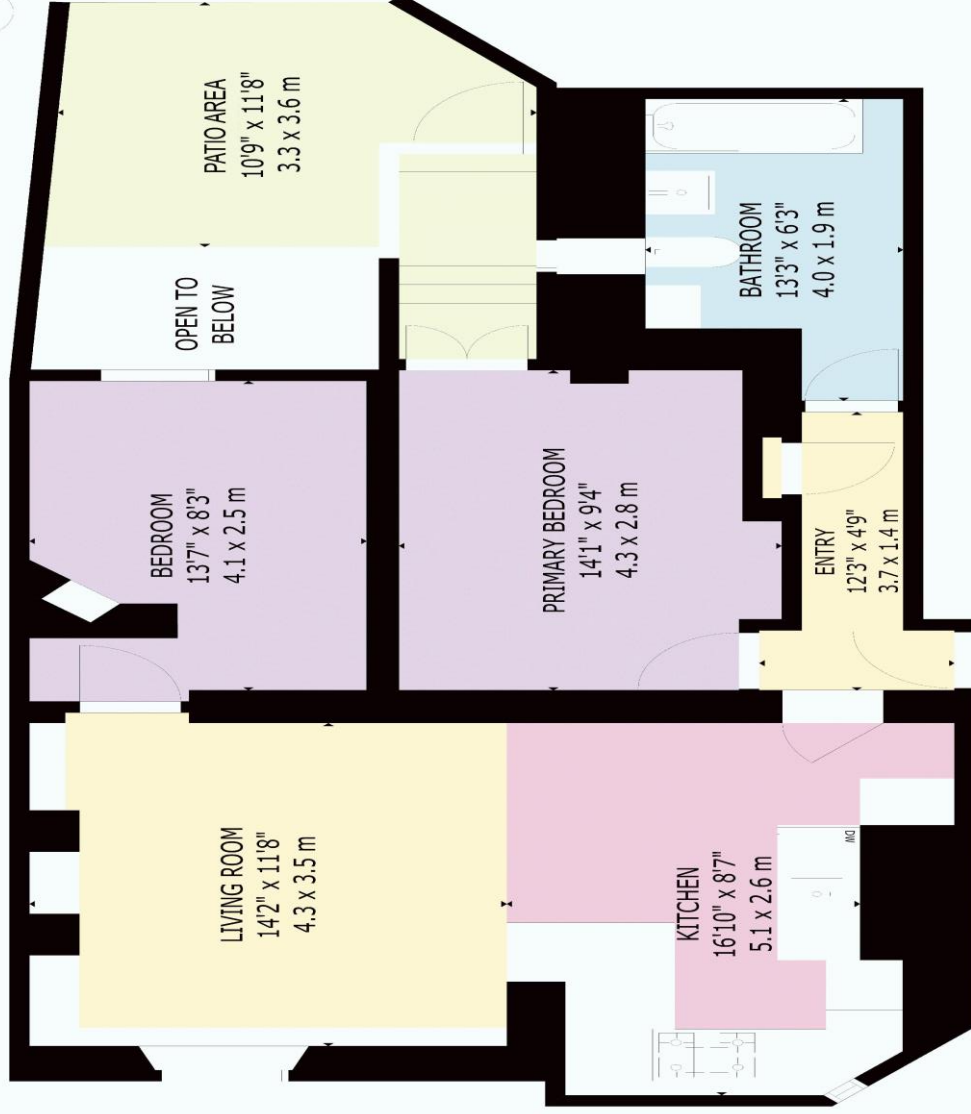
**Close to transport links to central London and the City
(Northern Line tube)**

EPC - C









GROSS INTERNAL AREA
TOTAL 69 m²/747 sq.ft.
BASEMENT 69 m²/747 sq.ft.
EXCLUDED AREAS GARDEN 9 m²/101 sq.ft.
SIZE AND DIMENSIONS ARE APPROXIMATE, ACTUAL MAY VARY

BASEMENT