



The Summit, Highgate West Hill, Highgate Village, N6

£2,500,000

Freehold



44 highgate high street, highgate village, london, n6 5hx

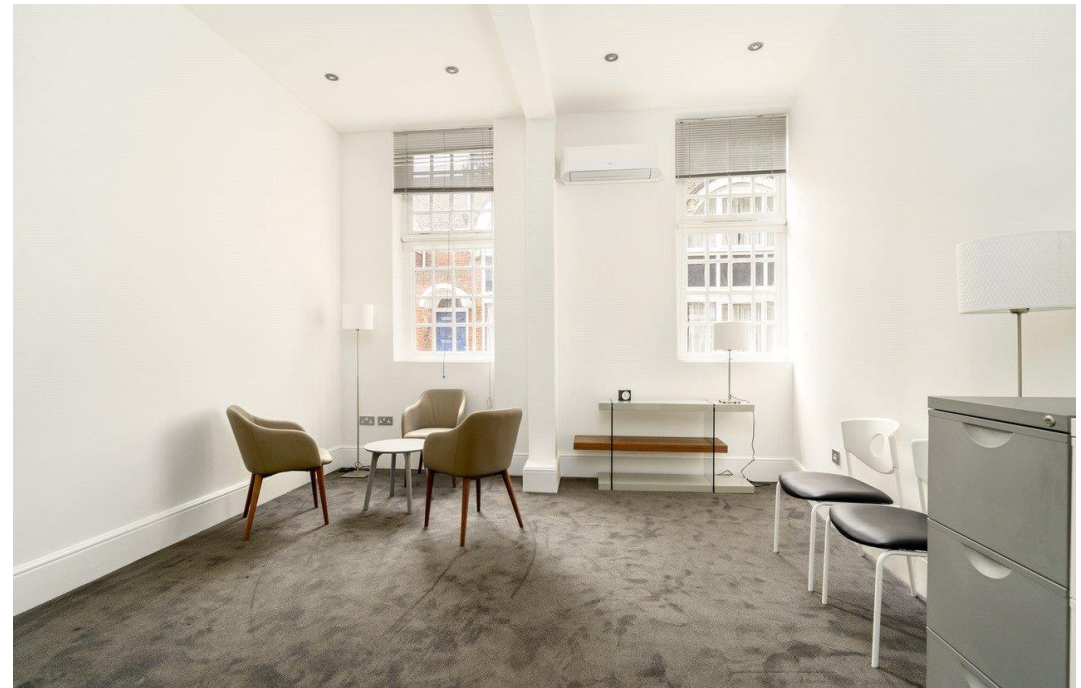
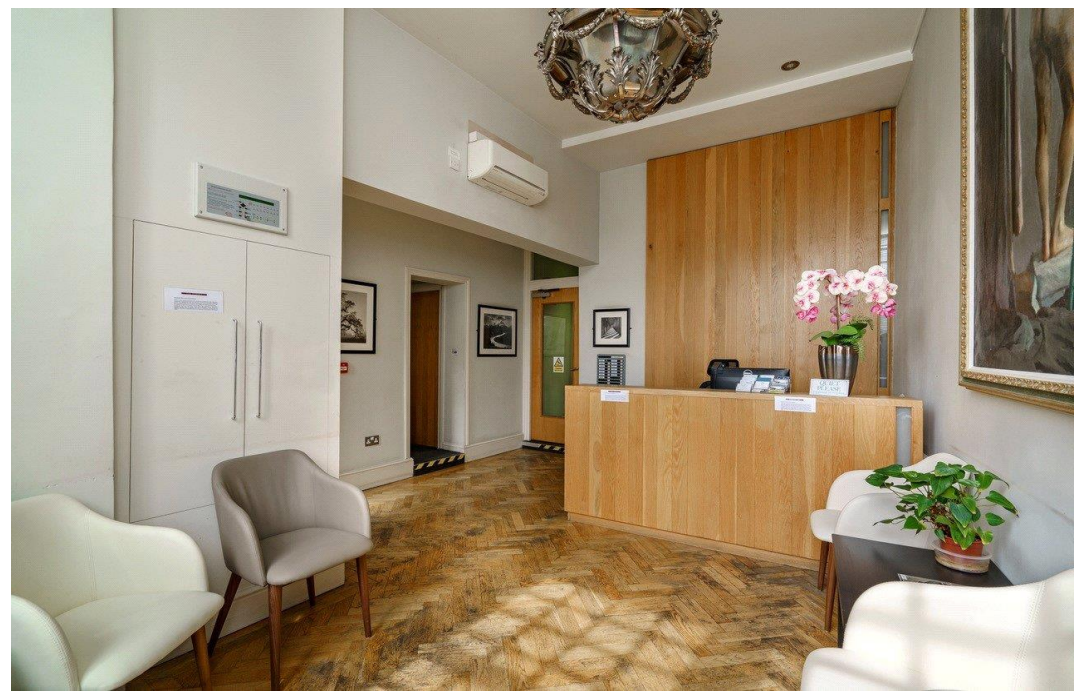
telephone 020 8348 8000 facsimile 020 8348 8232

email highgate@litchfields.com web litchfields.com

offices also in hampstead garden suburb



Charming detached building with planning permission for residential use. Highgate West Hill is the “Site of the Old Fox & Crown” and has been described as one of Highgate’s greatest contributions to world history. In 1837, the young Queen Victoria was travelling down the hill when her horses bolted. The landlord, James Turner, managed to stop the carriage. Had Victoria been killed, there would have been no Victorian era! The inn was demolished in 1896; the royal coat of arms presented to Turner is now in the Highgate Literary and Scientific Institution. Currently the building is let to The Summit Clinic. . Planning Permission has been GRANTED for Residential use. (ref: 2018/0934/P), dated 7 November 2018. N.B We have been informed the building projected income is c£220,000 p.a The property is near the brow of Highgate West Hill and also close to the fashionable Swains Lane (0.6m) and delightful shops, cafe's and restaurants of Highgate High Street (0.3m). The property is adjacent to Hampstead Heath & Fitzroy Park and near to Parliament Hill and Kenwood House. Highgate Station (Northern Line) is 0.9 mile away and the renowned private schools (Highgate School & Channing) are within walking distance (0.3m) Square Footage: 3,138 sq ft. EPC E





Detached Commercial Building with planning permission granted for residential use

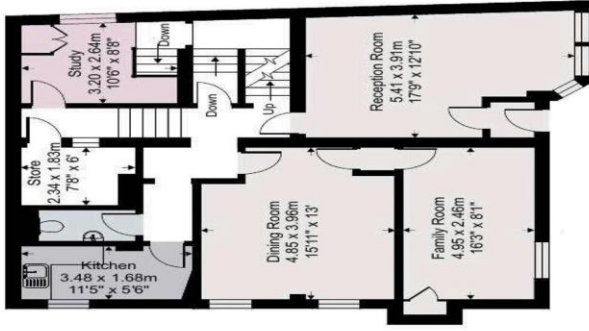
Village Location

Off street Parking for 4 cars

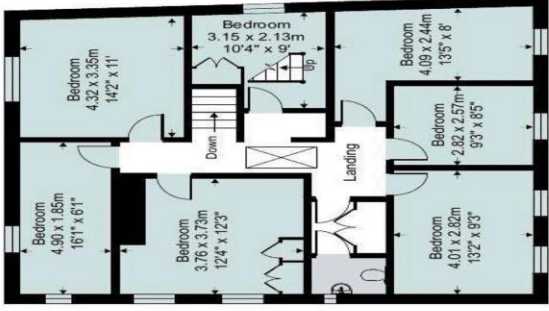
EPC Rating E

3138 Sq Ft | 291.5 Sq M

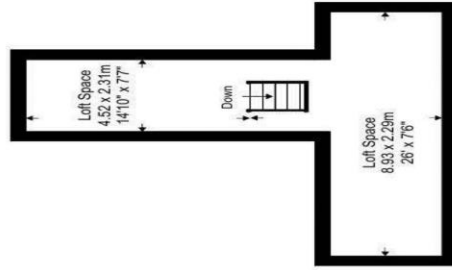
Ground Floor



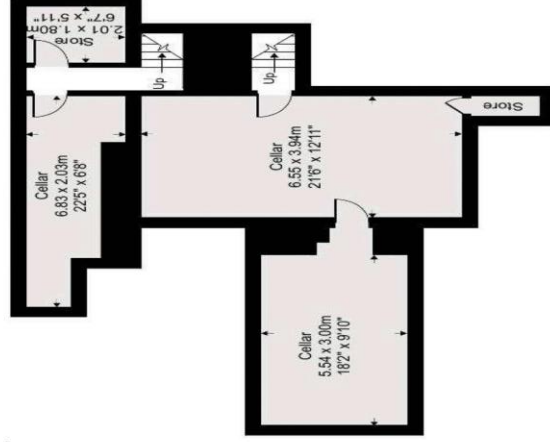
First Floor



Second Floor



Lower Ground Floor



Approximate Total Area
3,138 ft²
291.50 m²