



North Hill, Highgate, N6
£1,950,000 Freehold



44 highgate high street, highgate village, london, n6 5hx
telephone 020 8348 8000 facsimile 020 8348 8232
email highgate@litchfields.com litchfields.com
offices also in hampstead garden suburb & crouch end

An immaculate semi detached five bedroom modern built family home (c.2426 sq ft). The house is set back from the road behind electronic gates with one off street parking space. Providing generous accommodation over four floors and finished to a high standard throughout including, a Poggenpohl fitted kitchen/breakfast room, solid oak staircases and floors and doors, double glazing, excellent insulation throughout. Further benefits include fitted Italian 'Estel' wardrobes in the bedrooms and high quality porcelain tiles in the bathrooms. The super master bedroom suite has an en-suite bathroom as well as a dressing room with bespoke shelving and hanging space. The accommodation comprises five bedrooms, four bathrooms, two reception rooms, a utility room on the first floor, two separate w.c's and a rear patio garden. Conveniently located close to Highgate Village, Highgate tube station and the delights of Kenwood and Hampstead Heath. EPC - C.





Modern built Semi-detached Family Home
Two Spacious Reception Rooms
Five Bedrooms
Four Bathrooms (3 En-Suite)
Poggenpohl Kitchen/Breakfast Room
Rear Garden & Balcony
Utility Room & two Guest Cloakrooms
Off Street Parking behind
Security Gates x 1 car
Close to Village, Tube and the Heath
EPC - C

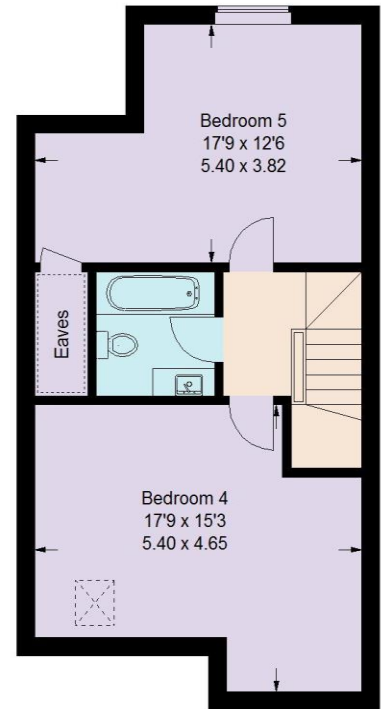


North Hill

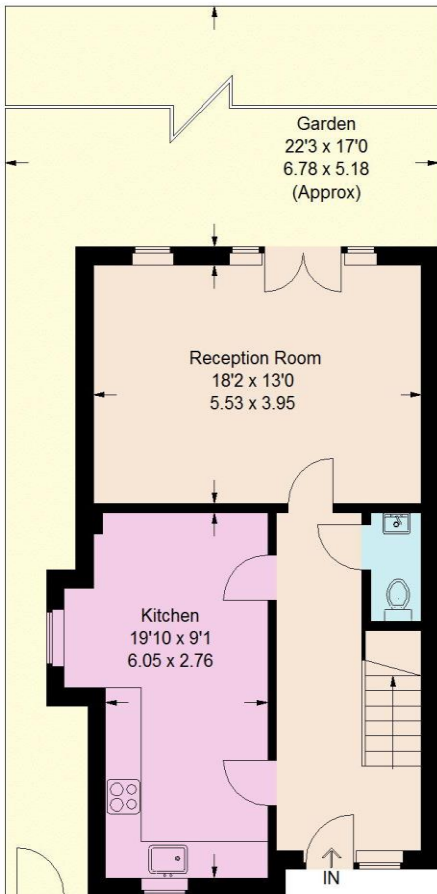
Approximate Gross Internal Area.
(Including Eaves / Excluding Reduced Headroom)
2426 sq ft / 225.3 sq m



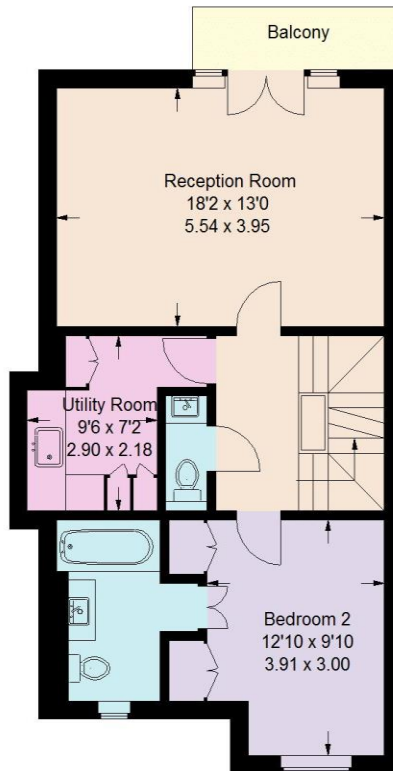
= Reduced headroom below 1.5 m / 5'0



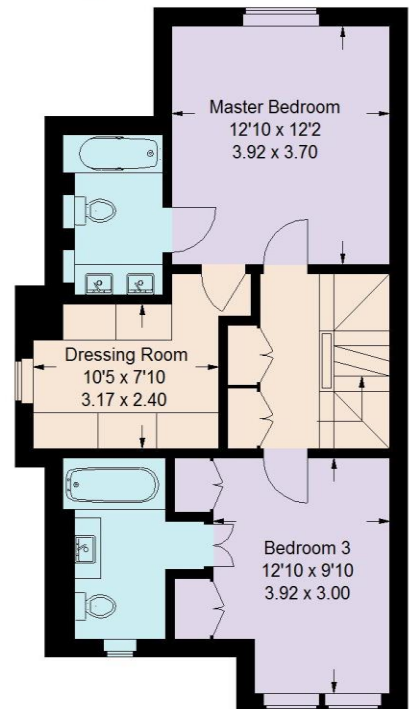
Third Floor = 576 sq ft / 53.5 sq m
(Including Eaves /
Excluding Reduced Headroom)



Ground Floor = 601 sq ft / 55.8 sq m



First Floor = 643 sq ft / 59.7 sq m



Second Floor = 606 sq ft / 56.3 sq m

Illustration for identification purposes only, measurements are approximate, not to scale.