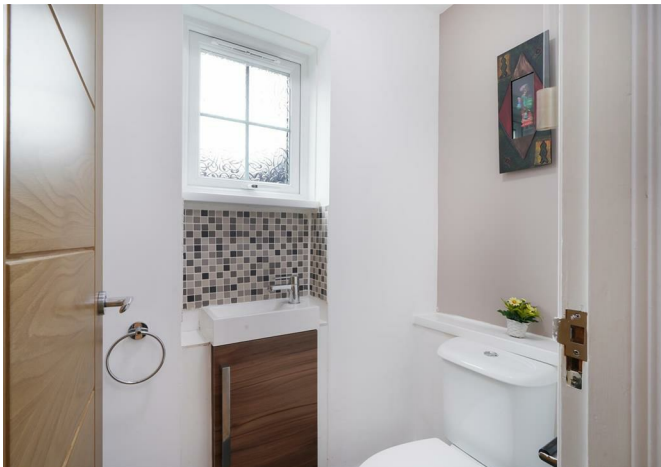




6 Sudbury Hill Close, Wembley, HA0 2QR
£3,195 Per Month



6 Sudbury Hill Close, Wembley, HA0 2QR

£3,195 Per Month

Stylish and Spacious 4-Bedroom Detached Family Home with Gated Entry

Available from the end of September 2024, this beautifully maintained four-bedroom detached family home offers a perfect blend of modern living and timeless elegance in a highly desirable location near Sudbury Court Drive and Harrow on the Hill.

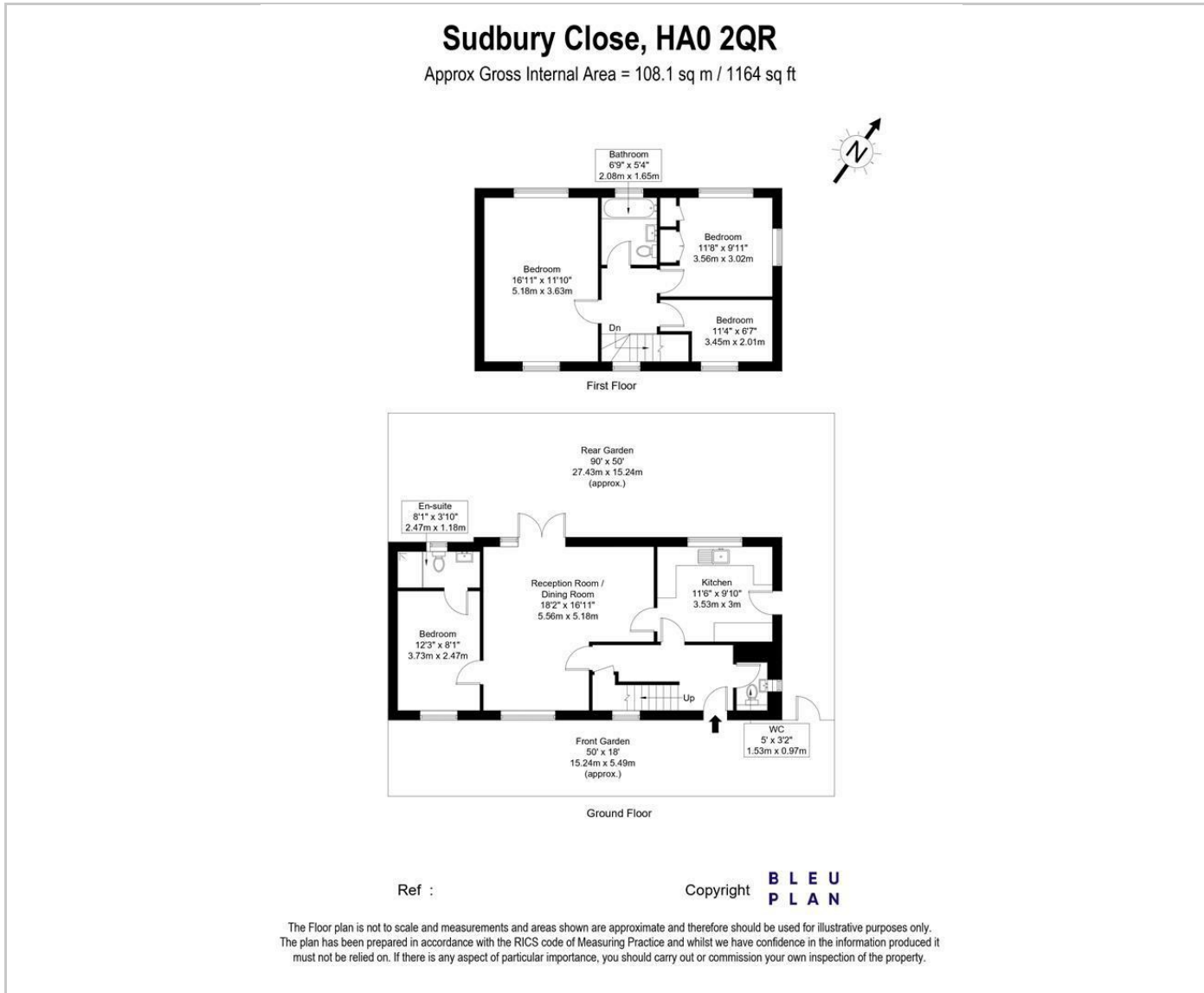
The home is accessed via secure electric gates leading to a private driveway with parking for two cars. Inside, the spacious reception room and contemporary fully-fitted kitchen provide stylish spaces for family living and entertaining. The home features three large double bedrooms, one conveniently located on the ground floor with its own ensuite bathroom, and a well-sized single bedroom. The master and second bedrooms enjoy dual aspect windows, filling the rooms with natural light.

Outside, the beautifully landscaped rear garden offers a serene space for relaxation or entertaining, while the two modern bathrooms provide comfort and convenience.

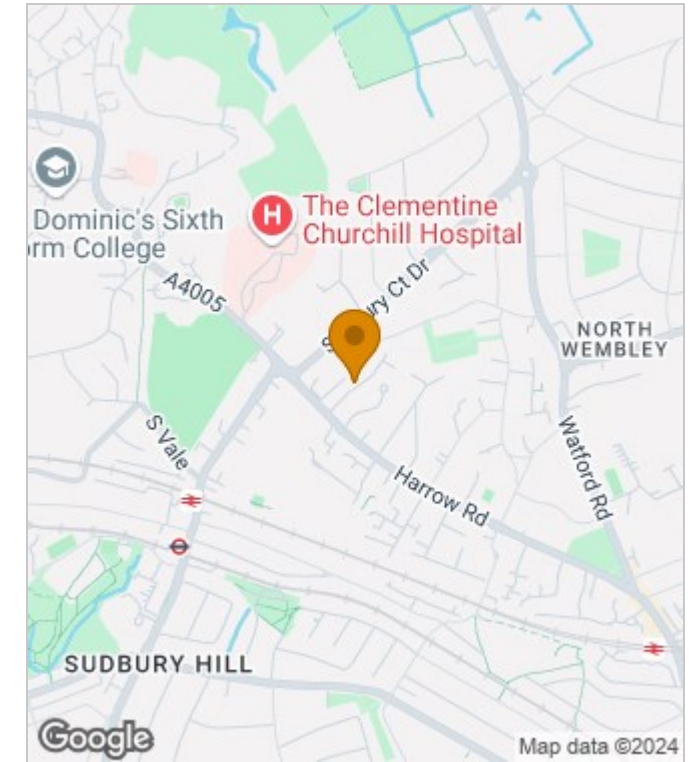
Situated within walking distance of Sudbury Hill Station (Piccadilly Line), North Wembley (Bakerloo), and Harrow on the Hill (Metropolitan Line), the home is ideally located for commuters. Families will benefit from being close to top schools, including the prestigious Harrow School, Orley Farm Independent School, and St. Dominic's College. Harrow and Wembley town centres are also nearby, offering extensive shopping,



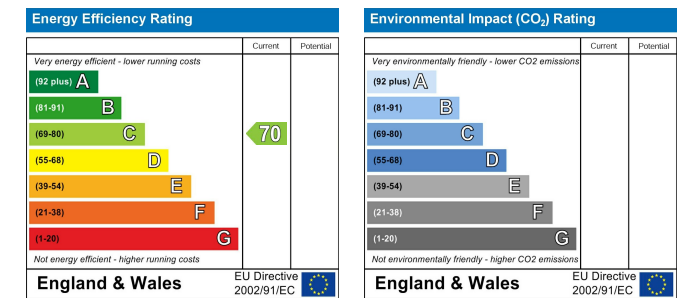
Floor Plans



Area Map



Energy Performance Graph



These particulars, whilst believed to be accurate are set out as a general outline only for guidance and do not constitute any part of an offer or contract. Intending purchasers should not rely on them as statements of representation of fact, but must satisfy themselves by inspection or otherwise as to their accuracy. No person in this firm's employment has the authority to make or give any representation or warranty in respect of the property.