



• mcgowan homes •

18 Thyme Drive, Middleton



- Immaculately Presented Three Bed Semi Detached Set Over THREE Storeys
 - Gas Central Heated / uPVC Double Glazed Windows
 - Lounge / Spacious Dining Kitchen And Down-Stair W.C.
 - Two First Floor Bedrooms And Bathroom
 - Master Bedrooms And En-Suite To The 2nd Floor
- Off Road Parking And Lawned Gardens To The Front And Rear

£290,000

Immaculately presented three bed semi detached over THREE storeys. Constructed by the well regarded home builders Messrs Taylor Wimpey circa 2022 offering modern and spacious family accommodation. Briefly comprising of gas central heating, uPVC double glazed windows, spacious dining kitchen, down-stair W.C and lounge to the ground floor. The first floor affords two bedrooms, a three-piece bathroom and a further landing leading to the 2nd floor which houses the master bedroom and a three-piece en-suite shower room. Externally to the front is a tarmacadam driveway extending down the side affording generous off road parking and a lawned garden. To the rear is a well maintained, enclosed lawned garden and patio area. Conveniently positioned for access to local shops, well regarded schools, transport links and Middleton town centre. The M60 motorway is just a short drive away making this a good choice for the commuter.

GROUND FLOOR

HALL

Entrance hall with carpet flooring, meter cupboard, radiator and staircase rising to the first floor.

DINING KITCHEN

5.36m x 4.30m (17'7" x 14'1")

Spacious and contemporary styled dining kitchen comprising of a range of wall and base units incorporating inset sink, "AEG" Induction hob with splash-back and extractor above, built in electric oven, built in microwave, integrated fridge/freezer, dishwasher and washing machine, spotlights, laminated wooden flooring and radiator. Access to lounge and down-stair W.C.



W.C

Useful down-stair W.C with vanity wash-basin, laminated wooden flooring and radiator.

LOUNGE

4.25m x 3.68m (13'11" x 12'0")

Rear aspect with carpet flooring, T.V point, spotlights and radiator. French doors provide access to the rear garden.



FIRST FLOOR

BEDROOM 2

4.27m x 3.49m (14'0" x 11'5")

Rear aspect with fitted wardrobes, separate fitted cupboard, carpet flooring and radiator.



BEDROOM 3

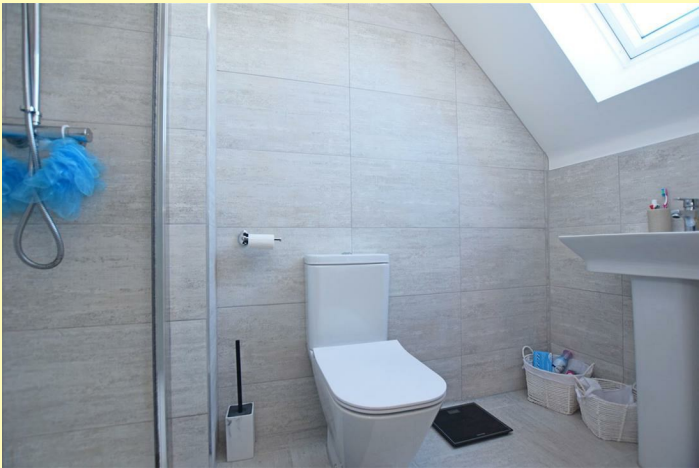
3.29m x 2.21m (10'9" x 7'3")

Front aspect with carpet flooring and radiator.



BATHROOM

Three-piece bathroom comprising of bath, vanity wash-basin, low-level W.C, part tiled walls, tiled flooring, heated towel rail and spotlights.



SECOND FLOOR

MASTER BEDROOM

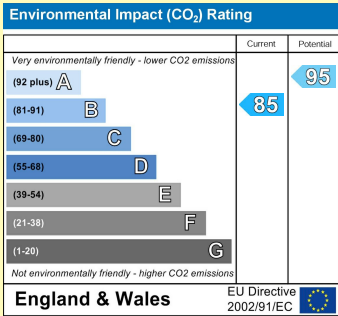
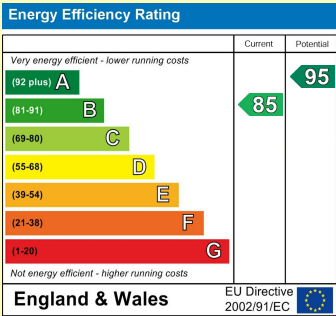
6.75m x 4.26m (22'1" x 13'11")

Front to rear aspect with carpet flooring, T.V point and radiator. Access to en-suite.



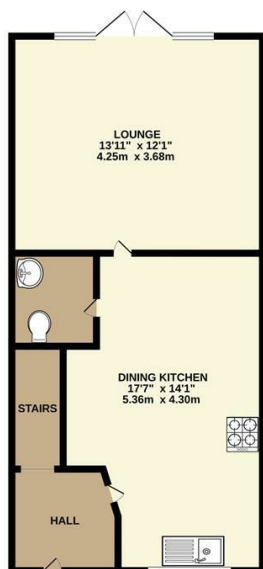
EN-SUITE

Three-piece en-suite comprising of shower cubicle, vanity wash-basin, low-level W.C, fully tiled walls and flooring, heated towel rail and sky-light window.



PLEASE NOTE: We have not checked the efficiency or operation of any services (Gas, Water, Electricity or Drainage) or any electrical, mechanical or heating appliances. All measurements taken via a sonic measure. Measurements should only be used as a guide and not for ordering any floor coverings or carpets. **Viewing Strictly By Appointment Only**

GROUND FLOOR
413 sq.ft. (38.4 sq.m.) approx.



1ST FLOOR
413 sq.ft. (38.4 sq.m.) approx.



2ND FLOOR
309 sq.ft. (28.7 sq.m.) approx.



THREE BED SEMI DETACHED

TOTAL FLOOR AREA : 1136 sq.ft. (105.5 sq.m.) approx.

Whilst every attempt has been made to ensure the accuracy of the floorplan contained here, measurements of doors, windows, rooms and any other items are approximate and no responsibility is taken for any error, omission or mis-statement. This plan is for illustrative purposes only and should be used as such by any prospective purchaser. The services, systems and appliances shown have not been tested and no guarantee as to their operability or efficiency can be given.
Made with Metropix ©2025

THINKING OF SELLING?

To find out why more homeowners are moving with McGowan Homes & Property Services, contact us for a free market appraisal of your home. We pride ourselves on a professional, efficient and friendly service. Let US take the worry out of your move.

TELEPHONE
0161 655 4113

YOUR HOME IS AT RISK IF YOU DO NOT KEEP UP REPAYMENTS ON A MORTGAGE OR OTHER LOANS SECURED ON IT.

43 Middleton Gardens, Middleton, Manchester M24 1AB

Telephone: 0161 655 4113

www.mcgowanhomes.co.uk

The above particulars are believed to be correct, but are not guaranteed, and form no part of any contract. No responsibility in respect of these particulars, which are supplied for guidance only and without liability, can be accepted by McGowan Home & Property Services, not by their clients, and any intending purchaser or lessee must satisfy himself by inspection or otherwise to the accuracy of all details contained therein. All property offered subject to availability. The Supply of Goods and Services Act 1982, does not apply to this brochure.