



basenewhall.co.uk

BASE3



Computer generated image of The Aurelia, plot 362

THE AURELIA

Plots 362, 367 & 369

3 bedroom, detached 2 storey house

A light and airy three bedroom home. The chef of the house is sure to cook up a storm in the kitchen, while there is liberal space in the open plan living/dining area to socialise with friends and family. Upstairs, the master bedroom is a substantial haven, with a juliet balcony to let in maximum light and an en suite bathroom.



COUNTRYSIDE
Homes

new**hall**

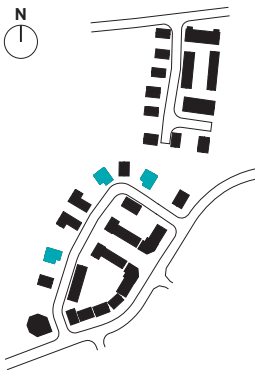
new**hall**



COUNTRYSIDE
Homes

Plots 362, 367 & 369

TOTAL INTERNAL AREA 112 sq.m 1211 sq.ft



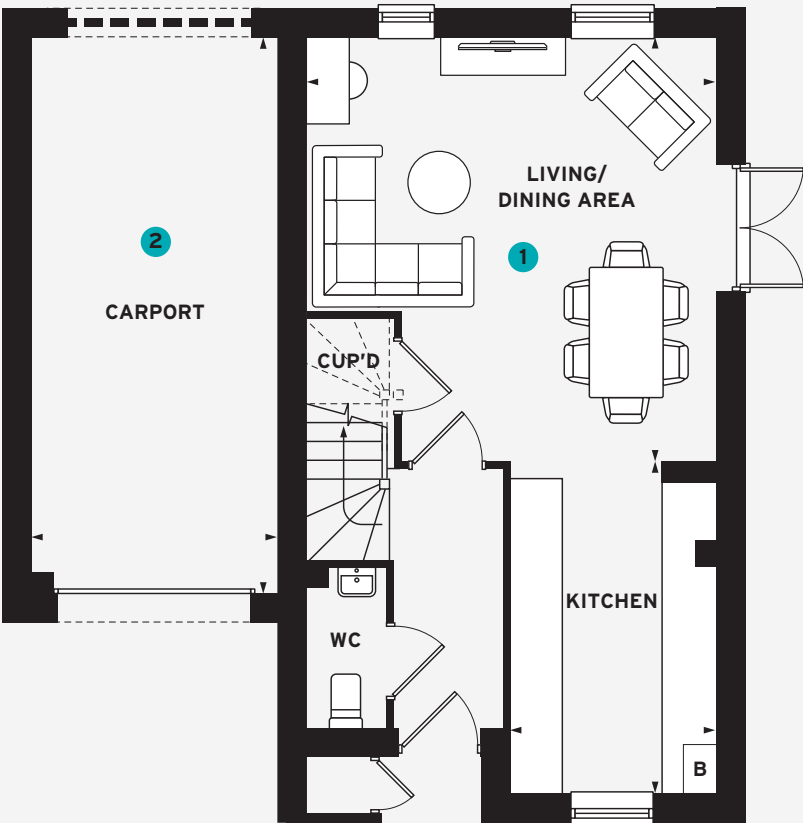
GROUND FLOOR

KITCHEN		
4.06m x 2.49m	13' 4" x 8' 2"	
LIVING/DINING AREA		
5.18m x 4.97m	17' 0" x 16' 4"	
CARPORT		
6.96m x 3.02m	22' 10" x 9' 11"	

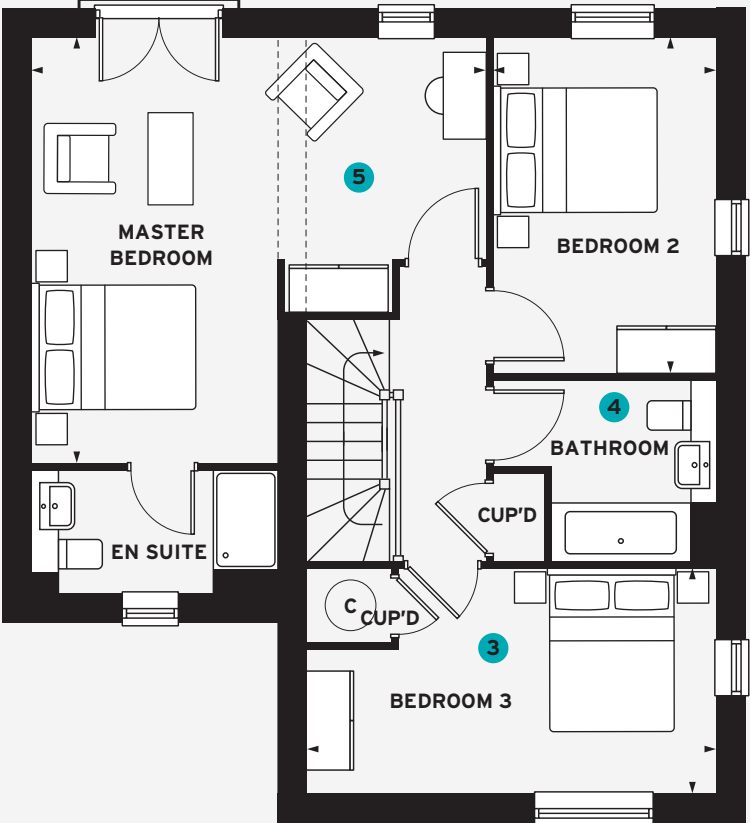
FIRST FLOOR

MASTER BEDROOM		
5.53m x 5.20m	18' 2" x 17' 1"	
BEDROOM 2		
4.10m x 2.72m	13' 6" x 8' 11"	
BEDROOM 3		
4.97m x 2.75m	16' 4" x 9' 0"	

- 1 Each member of the family will enjoy spending time in this appealing area
- 2 The home benefits from an integrated carport
- 3 Bedroom three is a generous and airy space
- 4 The bathroom features neutral wall tiling and sleek chrome accessories, perfect for the whole family
- 5 A private master suite with a Juliet balcony and en suite facilities



GROUND FLOOR



FIRST FLOOR

C = Hot Water Cylinder B = Boiler (location is indicative)
The floorplan has been produced for illustrative purposes only. Room sizes shown are between arrow points as indicated on plan. The dimensions have tolerances of + or -50mm and should not be used other than for general guidance. If specific dimensions are required, enquiries should be made to the sales consultant. The floor plans shown are not to scale. Measurements are based on the original drawings. Slight variations may occur during construction. Kitchen and bathroom layouts shown and furniture positions are indicative only. The illustrations shown are computer generated impressions of how the property may look and are indicative only. External details or finishes may vary on individual plots and homes may be built in either detached or attached styles depending on the development layout. Exact specifications, window styles and whether a property is left or right handed may differ from plot to plot. Please speak to our sales consultant for specific plot details. October 2024.