

BASE3

Signature
COLLECTION

basenewhall.co.uk



Computer generated image of The Viridi, plot 315

THE VIRIDI

Plots 313-317 & 341-343

4 bedroom, detached 2 storey house

As part of our signature collection this four bedroom house is magnificent both on the outside and the inside. Downstairs, you can cosy up as a family in the double aspect snug, or hold large gatherings in the expansive living/family/dining area which has access to the garden. Both the master and bedroom two have en suites, while the master has a useful dressing area.



COUNTRYSIDE
Places People Love

newhall

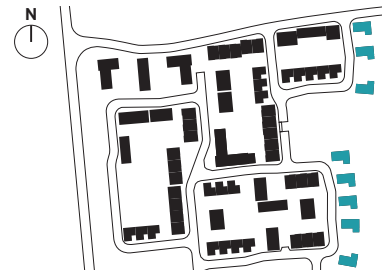
newhall



COUNTRYSIDE
Places People Love

Plots 313*, 314, 315, 316, 317, 341*, 342 & 343

TOTAL INTERNAL AREA 152 sq.m 1643 sq.ft



GROUND FLOOR

KITCHEN
5.47m x 4.00m 18' 0" x 13' 2"

LIVING/DINING/FAMILY AREA
8.51m x 3.89m 27' 11" x 12' 10"

SNUG
4.00m x 2.96m 13' 2" x 9' 9"

DECKING AREA
2.93m x 2.55m 9' 8" x 8' 3"

FIRST FLOOR

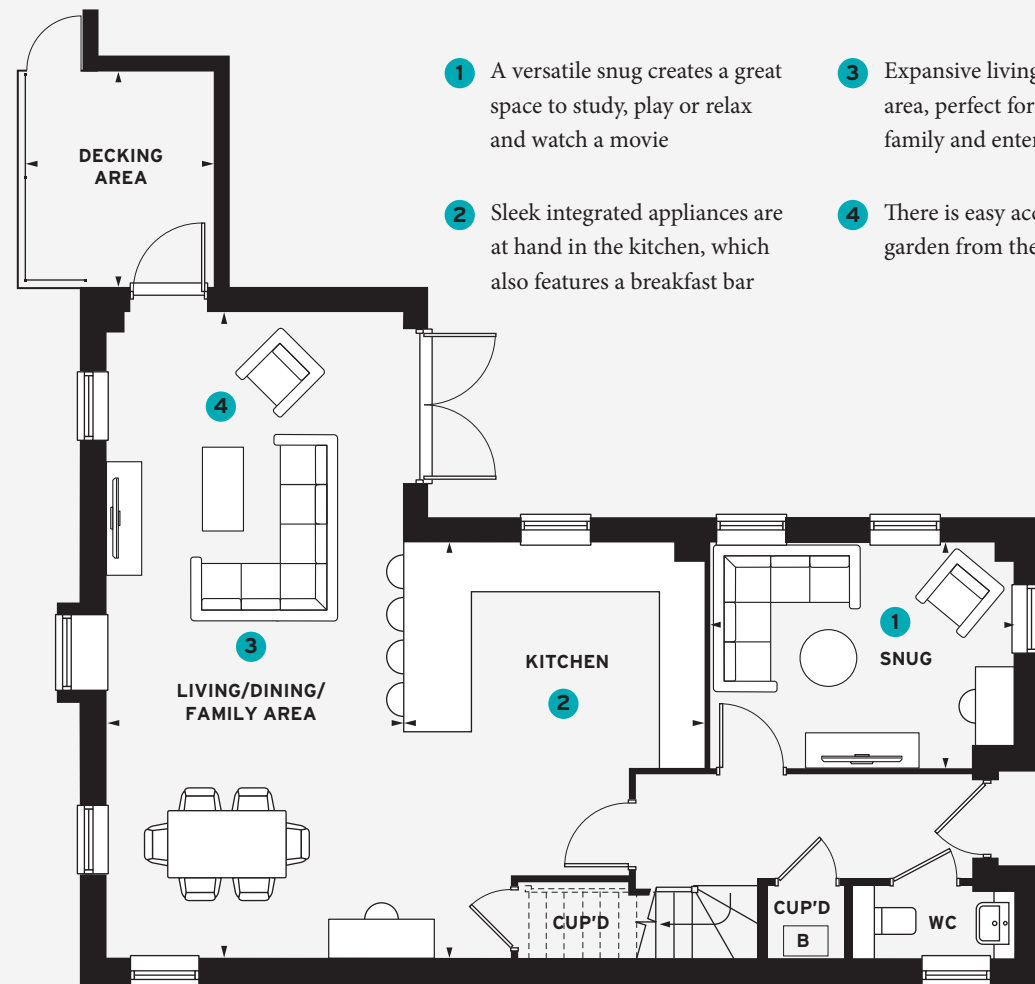
MASTER BEDROOM
4.13m x 2.91m 13' 7" x 9' 7"

DRESSING AREA
2.66m x 1.70m 8' 9" x 5' 7"

BEDROOM 2
3.37m x 3.24m 11' 1" x 10' 8"

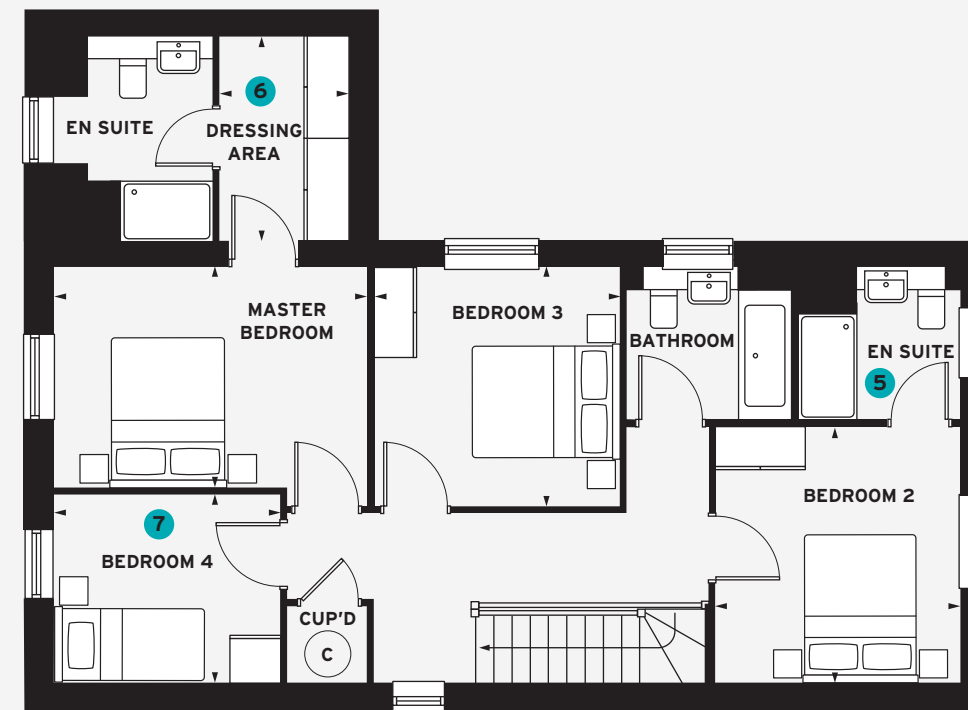
BEDROOM 3
3.23m x 3.15m 10' 8" x 10' 4"

BEDROOM 4
3.00m x 2.46m 9' 10" x 8' 1"



GROUND FLOOR

Window omitted to plots 314, 315, 316 & 342



FIRST FLOOR

- 1 A versatile snug creates a great space to study, play or relax and watch a movie
- 2 Sleek integrated appliances are at hand in the kitchen, which also features a breakfast bar
- 3 Expansive living/dining/family area, perfect for the whole family and entertaining guests
- 4 There is easy access to the garden from the living space
- 5 Bedroom two has its own en suite bathroom, perfect for guests
- 6 The master suite boasts its own walk in dressing area
- 7 Bedroom four could become a home office or study area

* Handed plot B = Boiler (location is indicative) C = Hot Water Cylinder
All room sizes are approximate with maximum dimensions which have been taken into the kitchen units and are not intended for carpet sizes or items of furniture. All dimensions and areas listed are to finished measurements. Countryside operates a policy of continuous product development and all room layouts may be subject to minor modifications. Kitchen, bathroom and furniture layouts shown are indicative only. Computer generated images are indicative only and can be subject to change. Images are often shown from an imaginary open space area and variations to the external design and landscaping may occur. Please ask Sales Consultants for detailed information regarding specific properties. August 2022.