

BASE3

basenewhall.co.uk



Computer generated image of The Aurelia, plots 300 & 301

THE AURELIA

Plots 220-222, 294-296, 300-303 & 333-340

3 bedroom, 2 storey house

A light and airy three bedroom home. The chef of the house is sure to cook up a storm in the galley-style kitchen, while there is liberal space in the open plan living/dining area to socialise with friends and family. Upstairs, the master bedroom is a substantial haven, with two windows to let in maximum light and an en suite bathroom.



COUNTRYSIDE
Places People Love

new**hall**

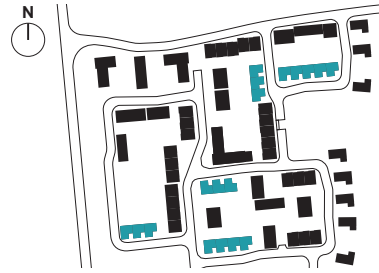
new**hall**



COUNTRYSIDE
Places People Love

Plots 220, 221, 222, 294*, 295*, 296*,
300, 301, 302, 303, 333*, 334*, 335*,
336, 337, 338, 339 & 340

TOTAL INTERNAL AREA 108 sq.m 1172 sq.ft



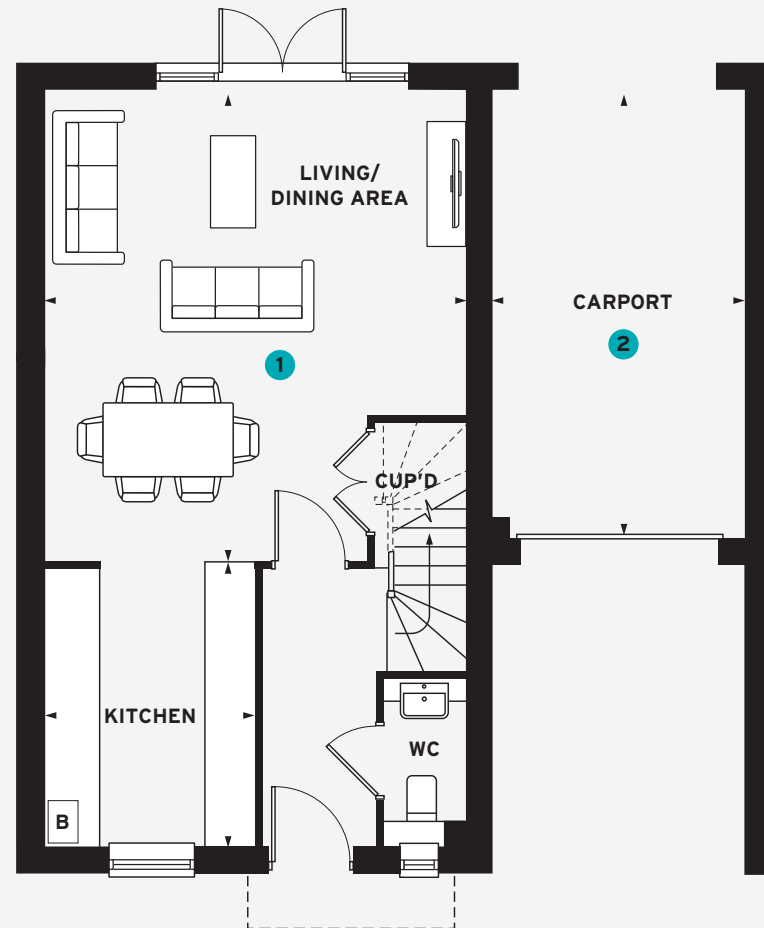
GROUND FLOOR

KITCHEN	3.41m x 2.52m	11' 3" x 8' 3"
LIVING/DINING AREA	5.65m x 5.02m	18' 7" x 16' 6"
CARPORT	5.41m x 3.04m	17' 9" x 10' 0"

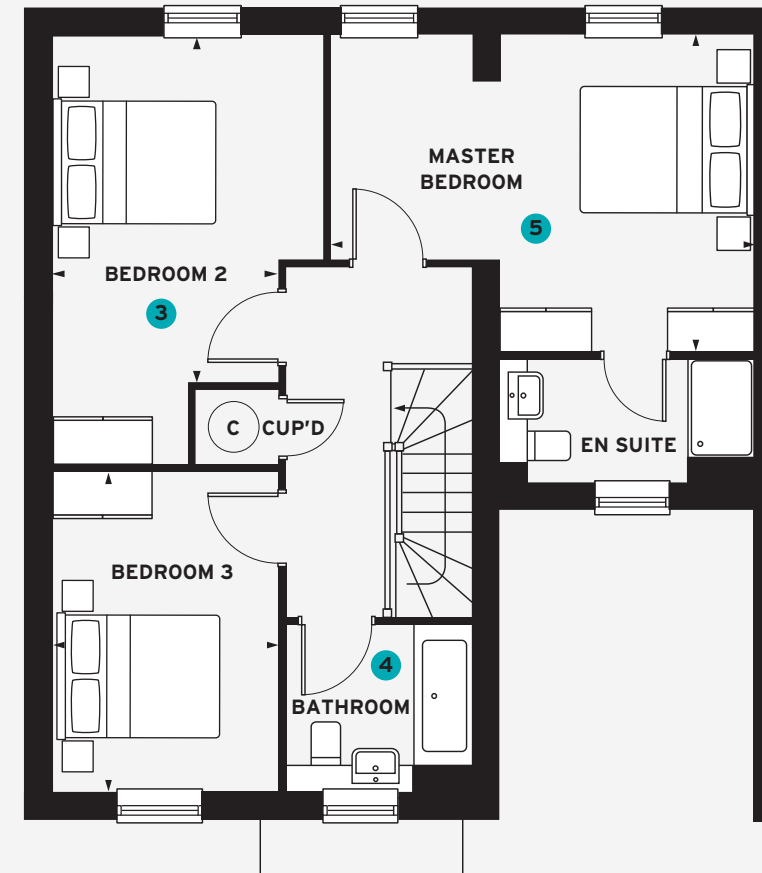
FIRST FLOOR

MASTER BEDROOM	5.06m x 3.78m	16' 7" x 12' 5"
BEDROOM 2	4.14m x 2.71m	13' 7" x 8' 11"
BEDROOM 3	3.83m x 2.71m	12' 7" x 8' 11"

- 1 Each member of the family will enjoy spending time in this appealing area
- 2 The home benefits from an integrated carport
- 3 Bedroom two is a generous and airy space
- 4 The bathroom features neutral wall tiling and sleek chrome accessories, perfect for the whole family
- 5 A private master suite with its own bathroom



GROUND FLOOR



FIRST FLOOR

* Handed plot C = Hot Water Cylinder B = Boiler (location is indicative)
All room sizes are approximate with maximum dimensions which have been taken into the kitchen units and are not intended for carpet sizes or items of furniture.
All dimensions and areas listed are to finished measurements. Countryside operates a policy of continuous product development and all room layouts may be subject to minor modifications. Kitchen, bathroom and furniture layouts shown are indicative only. Computer generated images are indicative only and can be subject to change. Images are often shown from an imaginary open space area and variations to the external design and landscaping may occur. Please ask Sales Consultants for detailed information regarding specific properties. August 2022.