



KINGFIELDS PARK

HULL

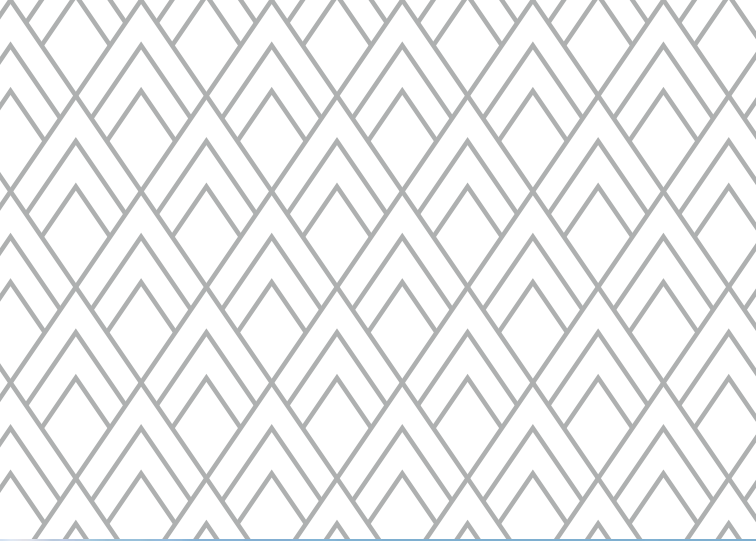
DISCOVER WHAT
MODERN LIVING
IS ALL ABOUT

keepmoat.com



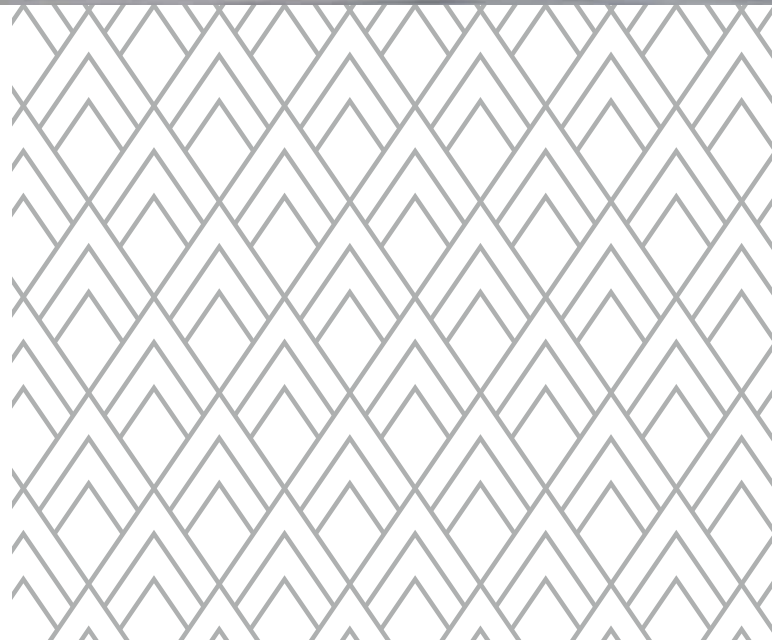


DIVERSITY DRIVE, KINGSWOOD, HULL, HU7 3NJ

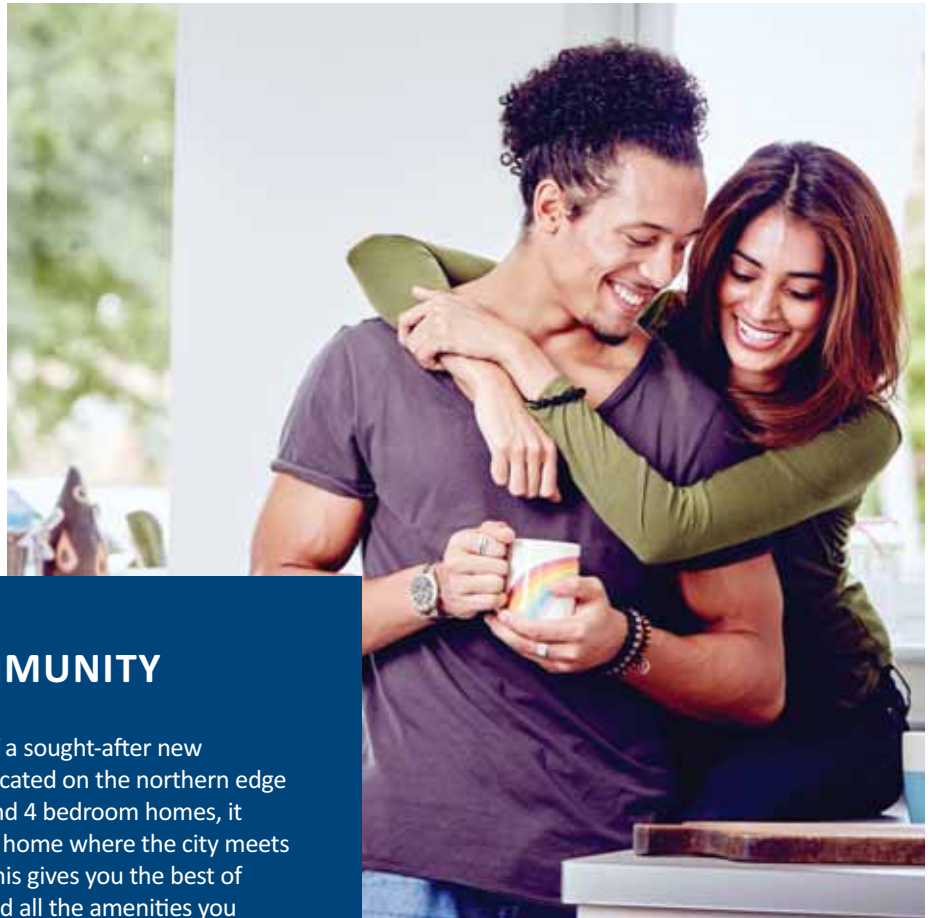


KINGFIELDS
PARK

► WELCOME TO
KINGFIELDS PARK



- WELCOME
LOCATION
TRAVEL LINKS
PICTURE YOURSELF HERE
SITE PLAN
MAKE IT YOUR OWN
SPECIFICATION
HEALTH & SAFETY
YOUR BUYING GUIDE
30,000 HOMES & COUNTING



AN EXCITING NEW COMMUNITY

Kingfields Park is the next exciting phase of a sought-after new development in the suburb of Kingwood located on the northern edge of Hull. Featuring a superb choice of 2, 3 and 4 bedroom homes, it gives you the unique opportunity to own a home where the city meets the countryside. A simply superb setting, this gives you the best of both worlds – lots of open green spaces and all the amenities you could wish for.

Thanks to the wide choice of homes on offer, you're sure to find one that ticks every box for size and style as well as fits your budget perfectly. So, whether you're looking for your first home, a family wanting for more room or a savvy downsizer looking for somewhere that has it all, you'll be surprised how affordable moving to a stylish new home at Kingfields Park is.

Plus with great schemes like Easymove moving could be more straightforward than you think.



Easymove



▶ LIFE IN HULL



THE LOCAL AREA

Thanks to Kingfields Park's enviable location, you can look forward to both the convenience of the city and stunning East Yorkshire countryside on your doorstep

The nearby Village Green features a café, pharmacy and medical centre. Then, on Wawne road there's a new retail park with a handy convenience store, fish & chip shop and barber shop, with lots more stores coming soon. Also within walking distance is Kingswood Retail and Leisure Park. Here you can dine at Gino D'Campo's Restaurant or one of the many other eateries. Plus, Hollywood Bowl, Cineworld cinema complex, David Lloyd Gym and Asda Superstore are also here. North Point Shopping Centre is literally just down the road. This offers a great choice of high street names, a market and major food retailers all under one roof.

Families will be pleased to know that there are a selection of great primary and secondary schools in the area all rated Good by Ofsted. They'll also be delighted to hear that just 4 miles away is East Park. As the biggest and most popular park in the city, there's something for everyone in this picturesque Grade II listed park. Covering 130 acres of parkland, you can take a ride on the legendary splash boat or meet the amazing animals in the education centre.

As Kingsfields Park is just 5 miles from the centre of Hull, you've also got the whole city and its many varied delights to discover. So, one day you can be on a shopping expedition followed by drinks and meal, the next heading for one of the many cultural and entertainment venues.

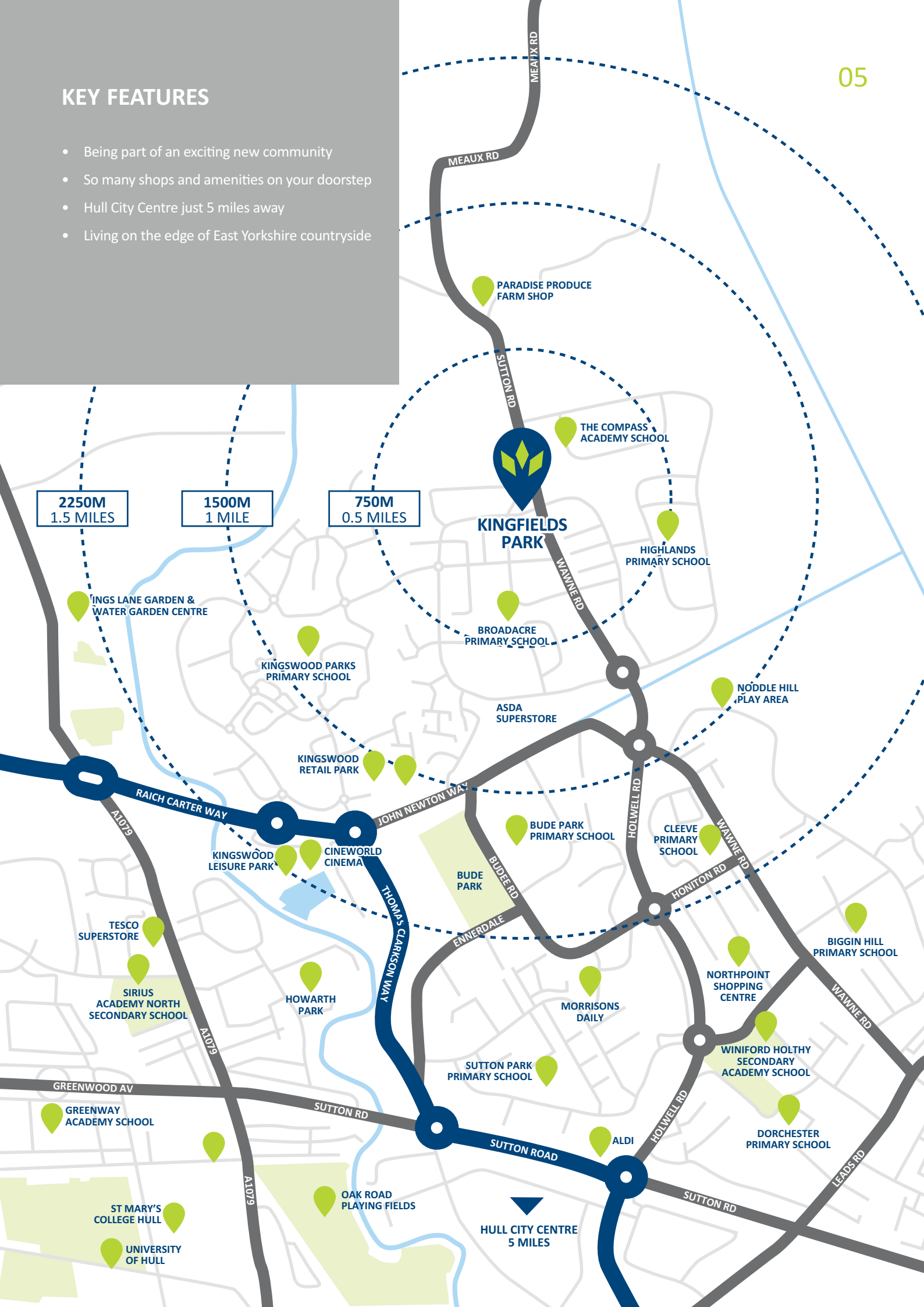
For days out, you've got all of East Yorkshire to explore. Mappleton beach is a great spot for a stroll and picnic with its sandy and shingle beach. Or, if you want to blow the cobwebs away try a walk across the Humber Bridge followed by a trip to Humber Bridge Country Park. For a fun-packed day for all, visit Sewerby Hall and Gardens in Bridlington with its magnificent gardens, zoo and Grade I listed Georgian country house.



▶ WELCOME
LOCATION
TRAVEL LINKS
PICTURE YOURSELF HERE
SITE PLAN
MAKE IT YOUR OWN
SPECIFICATION
HEALTH & SAFETY
YOUR BUYING GUIDE
30,000 HOMES & COUNTING

KEY FEATURES

- Being part of an exciting new community
- So many shops and amenities on your doorstep
- Hull City Centre just 5 miles away
- Living on the edge of East Yorkshire countryside



▶ TRAVEL LINKS

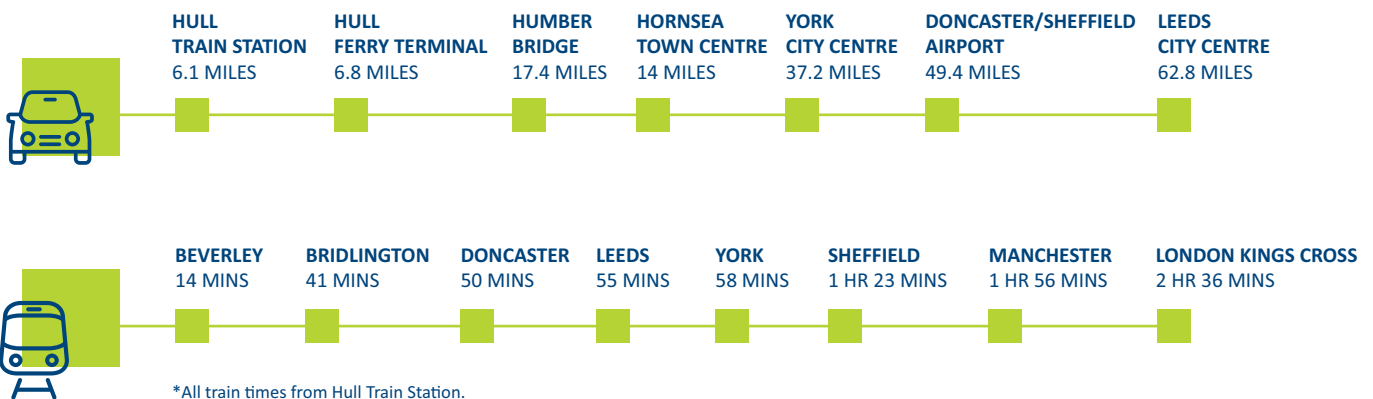
TRAVEL FOR WORK, REST AND PLAY

Commuting into Hull couldn't be easier thanks to Kingfields Park's excellent location just 5 miles from the city centre. In fact, you can be there in under 10 minutes by car. Equally as easy to get to is Beverley in under 20 minutes, Scunthorpe in just over 50 minutes and York in a little over an hour.

Train travel is just as convenient. Cottingham Train Station is a 15 minute drive away which provides regular services along the Hull to Bridlington and Scarborough Line with many Hull-bound trains continuing to Sheffield via Doncaster or York via Selby.

If you prefer to travel by bus, there are a number of bus stops dotted around the area with regular services you can hop onto that will take you into Hull City Centre as well as across the local area.

Finally, Doncaster Sheffield Airport is just over an hour's drive away. From here you can fly from Fuerteventura to Florida and Corfu to Cancun. Though, wherever you head, it won't be long before you'll be missing your home at Kingfields Park!



*All times are taken from Google Maps and National Rail. All times are approximate and subject to change.

WELCOME

LOCATION

▶ TRAVEL LINKS

PICTURE YOURSELF HERE

SITE PLAN

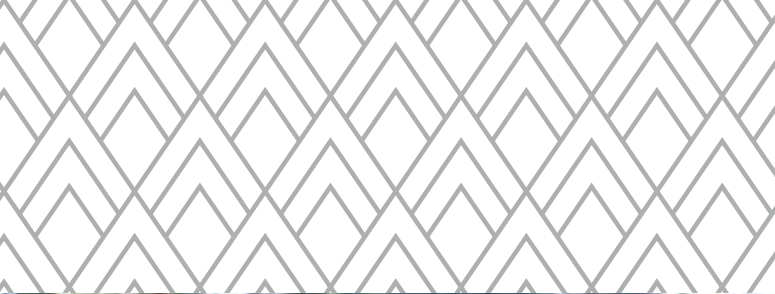
MAKE IT YOUR OWN

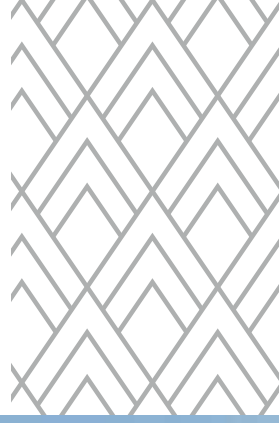
SPECIFICATION

HEALTH & SAFETY

YOUR BUYING GUIDE

30,000 HOMES & COUNTING

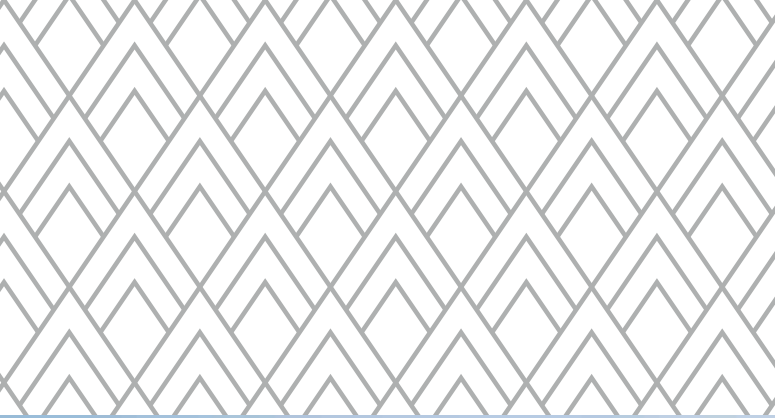




▶ PICTURE YOURSELF HERE



- WELCOME
- LOCATION
- TRAVEL LINKS
- ▶ **PICTURE YOURSELF HERE**
- SITE PLAN
- MAKE IT YOUR OWN
- SPECIFICATION
- HEALTH & SAFETY
- YOUR BUYING GUIDE
- 30,000 HOMES & COUNTING



► SITE PLAN

- THE ADLINGTON
2 bedroom home
- THE SOWERBY
3 bedroom home
- THE DOVENBY
3 bedroom home
- THE EMBLETON
3 bedroom home
- THE FOXHILL
3 bedroom home
- THE STRATFORD
3 bedroom home
- THE TURTON
4 bedroom home
- THE LAMBETH
4 bedroom home
- THE OAKWOOD
4 bedroom home
- THE OAKWOOD V1
4 bedroom home
- THE DARTMOUTH
4 bedroom home
- AFFORDABLE HOMES

- THE ASHBURN
2 bedroom home
- THE SEACOURT
3 bedroom home
- THE ELDWICK
3 bedroom home
- THE FARLEY
3 bedroom home
- THE SWARBOURNE
3 bedroom home
- THE THORNTON
4 bedroom home
- THE LONGFORD
4 bedroom home
- THE OLDBURY
4 bedroom home
- THE DEVOKE
4 bedroom home



- WELCOME
- LOCATION
- TRAVEL LINKS
- PICTURE YOURSELF HERE
- **SITE PLAN**
- MAKE IT YOUR OWN
- SPECIFICATION
- HEALTH & SAFETY
- YOUR BUYING GUIDE
- 30,000 HOMES & COUNTING

Please Note: This site plan is only a guide to the above development. It does not bind or imply that the layout will be as indicated. Please see our Home Sales Executive for full specification and plot details at this development.



▶ MAKE IT YOUR OWN



- WELCOME
- LOCATION
- TRAVEL LINKS
- PICTURE YOURSELF HERE
- SITE PLAN

▶ **MAKE IT YOUR OWN**

- SPECIFICATION
- HEALTH & SAFETY
- YOUR BUYING GUIDE
- 30,000 HOMES & COUNTING



WE NEVER FORGET IT'S YOUR HOME

Inside every Keepmoat home you'll find high standards of finish throughout and with a range of optional extras you can move into a new home that truly feels like your own.

*When you buy a Keepmoat home you can rest assured that it's covered by a 10 year warranty**

For the first two years, your fixtures and fittings are covered by the Keepmoat Warranty, in addition to this you are covered by a 10 year structural warranty, the first two years covered by Keepmoat and a further eight years cover provided by the NHBC – 10 years cover in total.

*Terms and conditions apply to all warranties, please speak to your Sales Executive for further details.

Availability of upgrades and standard choices are subject to build stage at point of reservation.



► SPECIFICATION



FINISHING TOUCHES

Our standard specification includes high quality, modern fixtures and fittings with a great choice of kitchen worktops and units.

Once you've reserved your home, we'll invite you back for your options meeting. This is the exciting bit. It's here you can discuss all the ways you can personalise your home.

Be inspired and make your home yours.



WELCOME
LOCATION
TRAVEL LINKS
PICTURE YOURSELF HERE
SITE PLAN
MAKE IT YOUR OWN
► **SPECIFICATION**
HEALTH & SAFETY
YOUR BUYING GUIDE
30,000 HOMES & COUNTING

GENERAL

- ✓ White sockets and switches
- ✓ Chrome finish ironmongery to internal doors
- ✓ Landscaped front garden
- ✓ 1.8m close boarded fence* Plot specific treatments should be discussed with your Sales Executive
- ✓ UPVC double glazed windows
- ✓ UPVC double glazed French doors
- ✓ 2 zone programmable gas central heating system with thermostatic radiator valves
- ✓ Pendant light fittings

DECORATING

- ✓ Matt emulsion painted walls and ceilings
- ✓ White gloss paint to interior woodwork

KITCHEN / UTILITY

- ✓ Choice of kitchen units*
- ✓ Choice of worktop with upstand*
- ✓ Stainless steel conventional electric oven
- ✓ Gas hob
- ✓ Stainless steel splashback
- ✓ Integrated extractor hood
- ✓ Stainless steel single bowl sink
- ✓ Boiler housing

Make it your own with our range of optional extras

BATHROOM

- ✓ Fitted white Sanitaryware
- ✓ Choice of wall tiles to bathroom* (Splashback to basin & around bath)
- ✓ Thermostatic shower over bath with tiled enclosure and glass screen*
- ✓ Extractor fan to bathroom
- ✓ Moisture resistant flush light fitting

EN-SUITE

- ✓ Fitted white Sanitaryware
- ✓ Choice of wall tiles to shower enclosure* (Splashback to basin & full height to shower enclosure)
- ✓ Thermostatic shower*
- ✓ Extractor fan
- ✓ Moisture resistant flush light fitting
- ✓ Glass shower enclosure

ELECTRICAL

- ✓ TV aerial socket to lounge
- ✓ BT socket to lounge
- ✓ Fibre broadband to properties
- ✓ Energy saving solar panels to selected homes

SAFETY & SECURITY

- ✓ Security latches to windows except fire egress
- ✓ Mains fed smoke detectors to hallway and landing

4 BEDROOM HOMES

- ✓ Upgraded kitchen: plinths, end panels to match doors and upgraded carcass
- ✓ Option of level 2 kitchen as standard
- ✓ External light
- ✓ Chrome downlights to WC x 2, Ensuite x 2 and Bathroom x 4



▶ YOUR BUYING GUIDE

At Keepmoat, we understand that buying a new home is probably one of the biggest decisions you'll ever make. It's a major financial commitment too. So, to help you through every step of the process, our friendly team are always on hand. Here is our guide to buying a new home:



STEP 01

Reservation

When you've found the perfect new Keepmoat home for you, one that ticks all the boxes, it's time to reserve it.

Your Sales Executive will guide you through the reservation agreement. You'll need to pay a reservation fee - this could be as little as £250* and makes up part of your deposit. It also means, subject to contracts and meeting the timescales in the agreement, the home is yours at the price agreed.

The reservation form must be signed and dated by you and our company representative.

If you've got a home to sell, our Easymove scheme could make moving easy. We manage the sale of your existing home and even pay the estate agent fees.

WELCOME
LOCATION
TRAVEL LINKS
PICTURE YOURSELF HERE
SITE PLAN
MAKE IT YOUR OWN
SPECIFICATION
HEALTH & SAFETY

▶ YOUR BUYING GUIDE

30,000 HOMES & COUNTING



STEP 02

Mortgage and Legal Advisors

Once you've reserved your dream home, it's time to appoint a solicitor, apply for your mortgage and decide what options and extras you'd like to add to your new home**.

If you need a mortgage and haven't already arranged one, you'll need to do so quickly. Your Sale Executive can give you the details of some reputable independent mortgage advisers and solicitors if you need a little help.

All mortgage lenders will want to value your new home for themselves before they lend you the money – even on our homes which offer fantastic value for money.

When moving house you need a solicitor to carry out the legal work of buying your home – this is called conveyancing. Your solicitor will handle all contracts, provide legal advice and carry out local council searches, work with the Land Registry and transfer the funds to pay for your home.

Your Sales Executive will provide you with regular build and sale progress updates to keep you informed throughout your homebuying journey.



STEP 03

Exchange of Contracts

When all parties are happy that all conditions of the legal contract are fulfilled, the contract between you and Keepmoat will be signed and exchanged. It's at this time your deposit will be paid to us too.

Once the balance of the deposit is paid, the whole transaction becomes legally binding meaning you have committed to buying the home.

Please remember that if your deposit is in a bank account that you need to give notice of withdrawal, make sure you let the bank know well in advance to avoid having to pay any penalties and delaying the exchange†.

*Reservation fee is regionally or development specific and may be higher in some areas. Please speak to your sales adviser to confirm your reservation fee.

**build stage dependent

†If the exchange does not take place on the agreed date, we are within our rights to place the property back on the market.



STEP 04

Build Completion

Once your new home has been through our internal quality inspection process, a NHBC or Local Authority Building Inspector will be invited to undertake a final inspection of your new home.

Once the inspector confirms your new homes meets the required standards they will provide a Certificate of Completeness and Compliance (CML). This will then be issued to your appointed solicitor and mortgage provider who need this before releasing the funds.

After your CML date and prior to legal completion you will be invited to attend your new home demonstration with both the Site Manager and Sales Executive. During this meeting you will be shown around your new home and be given a demonstration on how to use the appliances such as the boiler.



STEP 05

Legal Completion

You're nearly there. Legal completion is the final step. This is when your mortgage lender releases the funds to pay for your home. This is all done through your solicitor.

Following the CML, we'll be able to confirm your expected legal completion*, this is usually two weeks later. Now's the time to confirm your home removal arrangements and set up any post redirections.

We'll then provide your solicitor with the title deeds of your home and register you as the homeowner with the relevant utility companies. The home is now officially yours!



STEP 06

Move in

Once you've set a completion date, it's time to move in! Your dream Keepmoat home and a great new chapter awaits... once you've unpacked all the boxes.

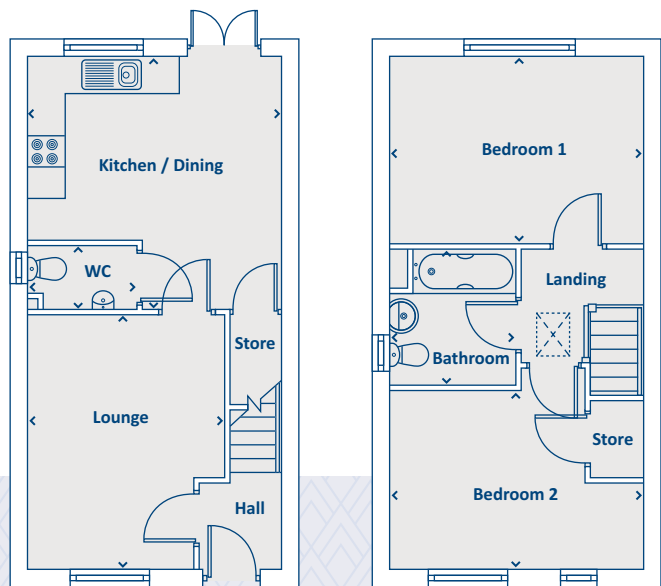
At Keepmoat we believe that customer service shouldn't come to an end just because you've completed your purchase. We provide an excellent aftercare service with our dedicated in-house Customer Care team on hand to answer any questions or issues you may have with your new home.





Artists impression, features may vary

THE ADLINGTON 2 bedroom home



GROUND FLOOR

Kitchen / Dining	4139 x 4161	13'7" x 13'8"
Lounge	4216 x 3213	13'10" x 10'7"
WC	1010 x 1800	3'4" x 5'11"

FIRST FLOOR

Bathroom	2168 x 2042	7'1" x 6'8"
Bedroom 1	3100 x 4161	10'2" x 13'8"
Bedroom 2	2950 x 4161	9'8" x 13'8"

› Longest measurement taken

PLEASE NOTE:

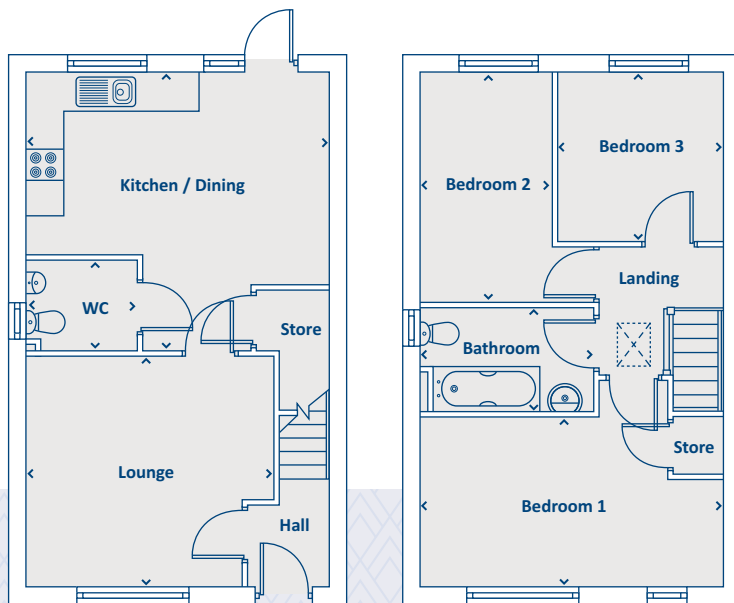
For illustration purposes only. All dimensions are + or - 50mm and these measurements should not be used for the purchase of carpets or furniture. Please see our Sales Executive for full specification and plot details at this development.





Artists impression, features may vary

THE SOWERBY 3 bedroom home



GROUND FLOOR

Kitchen / Dining	5025 x 3520	16'4" x 11'5"
Lounge	4057 x 3760	13'4" x 12'4"
WC	1800 x 1451	5'11" x 4'9"

FIRST FLOOR

Bedroom 1	5005 x 2770	16'5" x 9'1"
Bedroom 2	2162 x 3800	7'1" x 12'6"
Bedroom 3	2750 x 2755	9'0" x 9'0"
Bathroom	2843 x 1656	9'4" x 5'5"

› Longest measurement taken

PLEASE NOTE:

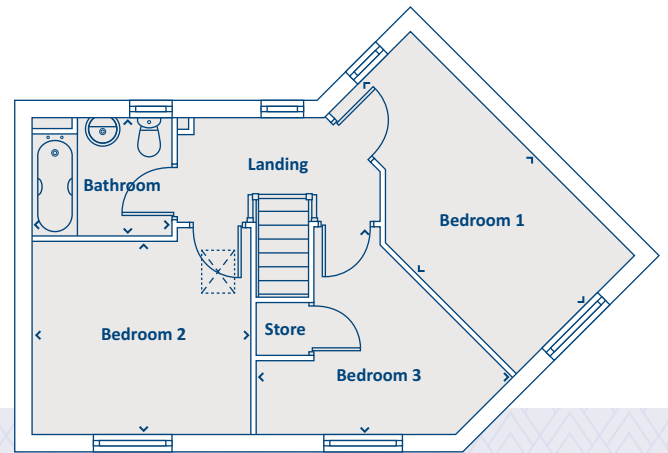
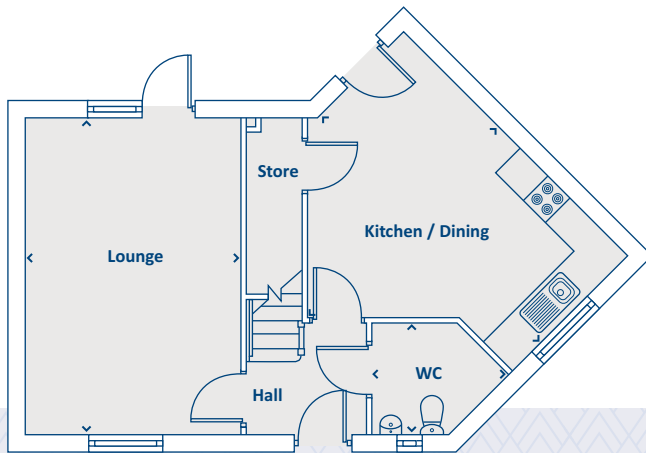
For illustration purposes only. All dimensions are + or - 50mm and these measurements should not be used for the purchase of carpets or furniture. Please see our Sales Executive for full specification and plot details at this development.





Artists impression, features may vary

THE DOVENBY 3 bedroom home



GROUND FLOOR

Kitchen / Dining	4472 x 5185	14'8" x 17'0"
Lounge	3500 x 5185	11'6" x 17'0"
WC	2221 x 1800	7'3" x 5'11"

FIRST FLOOR

Bathroom	2300 x 1914	7'7" x 6'3"
Bedroom 1	2775 x 5185	9'1" x 17'0"
Bedroom 2	3557 x 3160	11'8" x 10'4"
Bedroom 3	4230 x 3392	13'11" x 11'2"

› Longest measurement taken

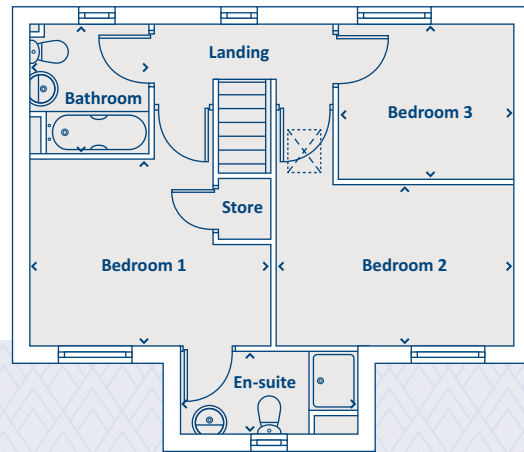
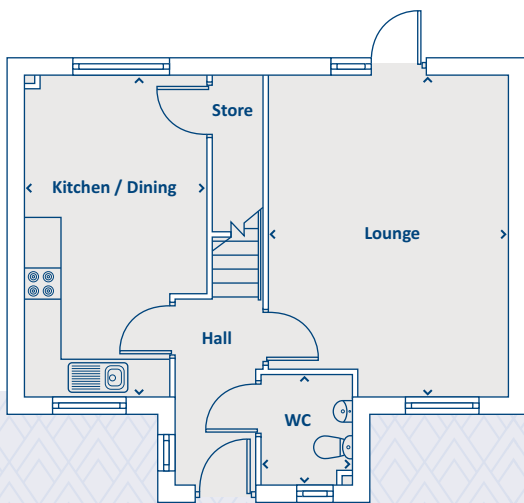
PLEASE NOTE:
For illustration purposes only. All dimensions are + or - 50mm and these measurements should not be used for the purchase of carpets or furniture. Please see our Sales Executive for full specification and plot details at this development.





Artists impression, features may vary

THE EMBLETON 3 bedroom home



GROUND FLOOR

Kitchen / Dining	3008 x 5298	9'10" x 17'5"
Lounge	3949 x 5298	12'11" x 17'5"
WC	1500 x 1800	4'11" x 5'11"

FIRST FLOOR

Bathroom	1945 x 2150	6'5" x 7'1"
Bedroom 1	3956 x 3055	13'0" x 10'0"
En-suite	2927 x 1370	9'7" x 4'6"
Bedroom 2	3949 x 2620	12'11" x 8'7"
Bedroom 3	2904 x 2585	9'6" x 8'6"

› Longest measurement taken

PLEASE NOTE:

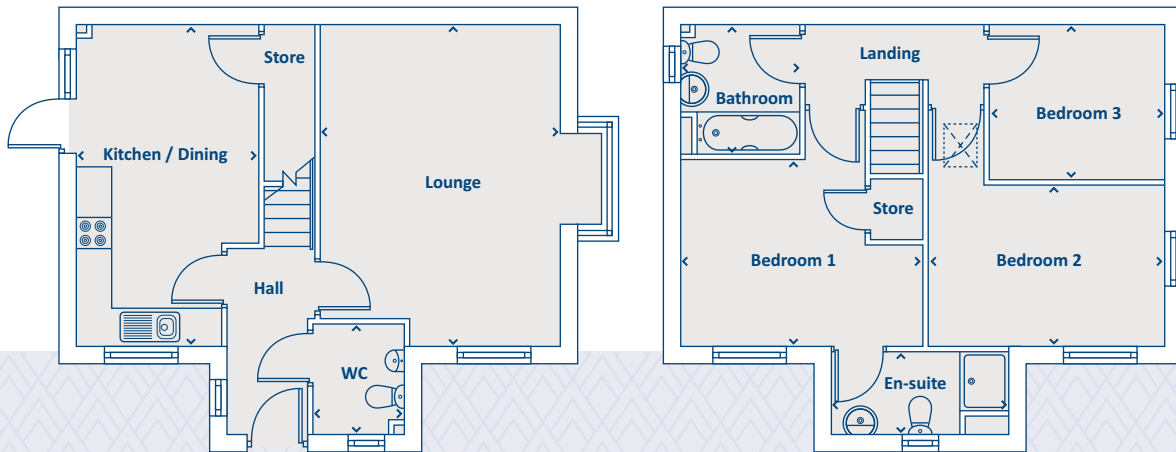
For illustration purposes only. All dimensions are + or - 50mm and these measurements should not be used for the purchase of carpets or furniture. Please see our Sales Executive for full specification and plot details at this development.





Artists impression, features may vary

THE FOXHILL 3 bedroom home



GROUND FLOOR

Kitchen / Dining	3008 x 5298	9'10" x 17'5"
Lounge	3949 x 5298	12'11" x 17'5"
WC	1445 x 1800	4'9" x 5'11"

FIRST FLOOR

Bathroom	1945 x 2150	6'5" x 7'1"
Bedroom 1	3958 x 3058	13'0" x 10'0"
En-suite	2927 x 1370	9'7" x 4'6"
Bedroom 2	3947 x 2620	12'11" x 8'7"
Bedroom 3	2904 x 2585	9'6" x 8'6"

› Longest measurement taken

PLEASE NOTE:

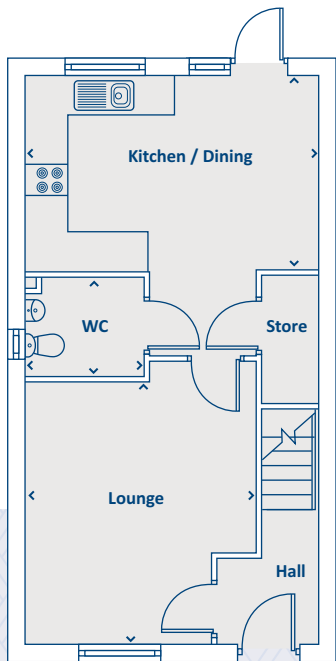
For illustration purposes only. All dimensions are + or - 50mm and these measurements should not be used for the purchase of carpets or furniture. Please see our Sales Executive for full specification and plot details at this development.





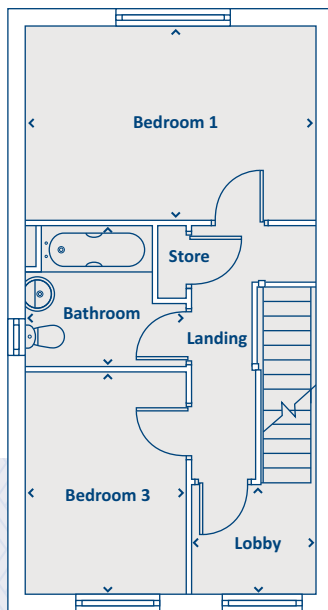
Artists impression, features may vary

THE STRATFORD 3 bedroom home



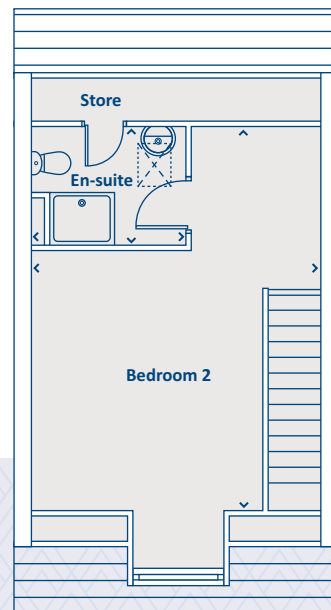
GROUND FLOOR

Kitchen / Dining	4510 x 3007	14'10" x 9'10"
Lounge	3562 x 4044	11'8" x 13'3"
WC	1800 x 1500	5'11" x 4'11"



FIRST FLOOR

Bathroom	2465 x 2150	8'1" x 7'1"
Bedroom 1	4510 x 3000	14'10" x 9'10"
Bedroom 3	2465 x 3401	8'1" x 11'2"
Lobby	1952 x 1682	6'5" x 5'6"



SECOND FLOOR

Bedroom 2	4510 x 5951	14'10" x 19'6"
En-suite	2351 x 1802	7'9" x 5'11"

› Longest measurement taken

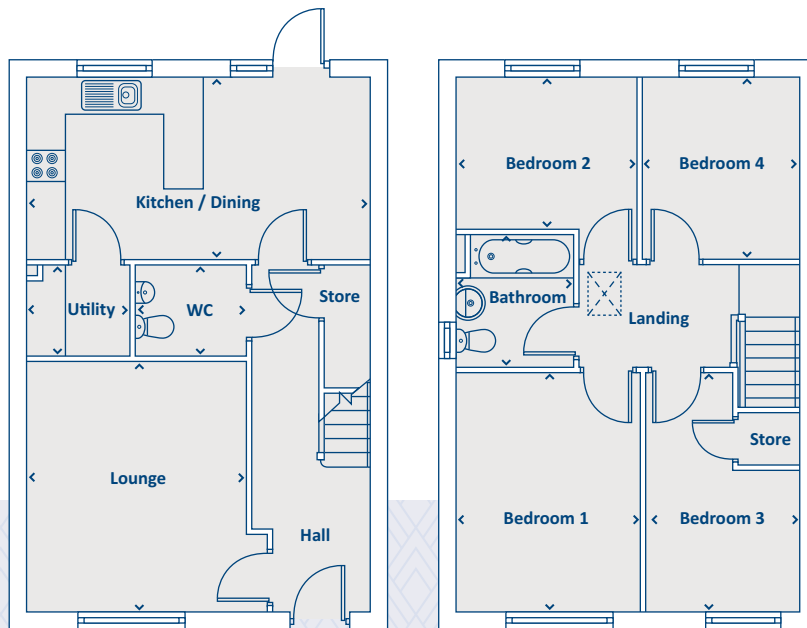
PLEASE NOTE:
For illustration purposes only. All dimensions are + or - 50mm and these measurements should not be used for the purchase of carpets or furniture. Please see our Sales Executive for full specification and plot details at this development.





Artists impression, features may vary

THE TURTON 4 bedroom home



GROUND FLOOR

Kitchen / Dining	5568 x 3000	18'3" x 9'10"
Lounge	3570 x 4113	11'9" x 13'6"
Utility	1637 x 1461	5'4" x 4'10"
WC	1800 x 1450	5'11" x 4'9"

FIRST FLOOR

Bedroom 1	3025 x 3901	9'11" x 12'10"
Bedroom 2	2975 x 2500	9'9" x 8'2"
Bedroom 3	2450 x 3901	8'0" x 12'10"
Bedroom 4	2500 x 3000	8'2" x 9'10"
Bathroom	1925 x 2150	6'4" x 7'1"

› Longest measurement taken

PLEASE NOTE:

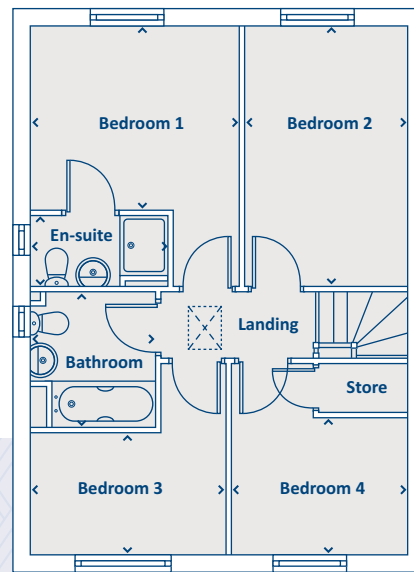
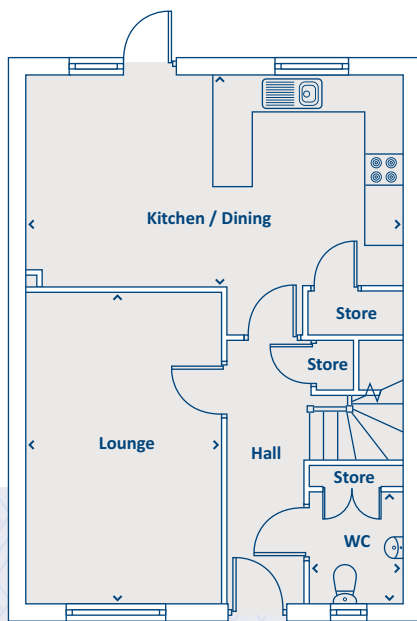
For illustration purposes only. All dimensions are + or - 50mm and these measurements should not be used for the purchase of carpets or furniture. Please see our Sales Executive for full specification and plot details at this development.





Artists impression, features may vary

THE LAMBETH 4 bedroom home



GROUND FLOOR

Kitchen / Dining	3463 x 6130	11'4" x 20'1"
Lounge	5060 x 3150	16'7" x 10'4"
WC	1800 x 1450	5'11" x 4'9"

› Longest measurement taken

FIRST FLOOR

Bathroom	2150 x 2000	7'1" x 6'7"
Bedroom 1	3022 x 3362	9'11" x 11'0"
En-suite	1185 x 2214	3'11" x 7'3"
Bedroom 2	4300 x 2675	14'1" x 8'9"
Bedroom 3	2001 x 3177	6'7" x 10'5"
Bedroom 4	2232 x 2860	7'4" x 9'5"

PLEASE NOTE:

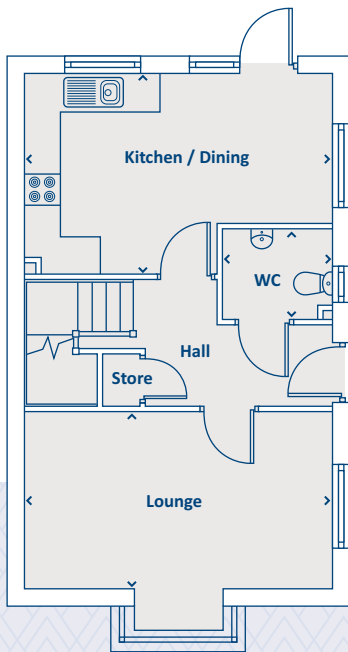
For illustration purposes only. All dimensions are + or - 50mm and these measurements should not be used for the purchase of carpets or furniture. Please see our Sales Executive for full specification and plot details at this development.





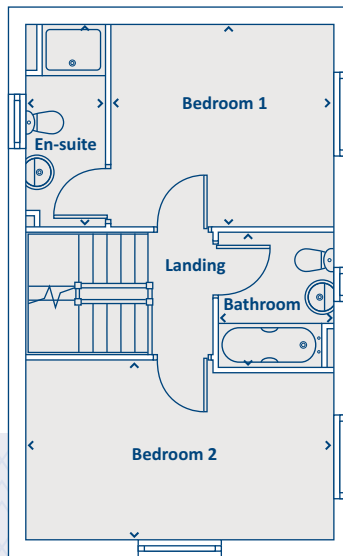
Artists impression, features may vary

THE OAKWOOD 4 bedroom home



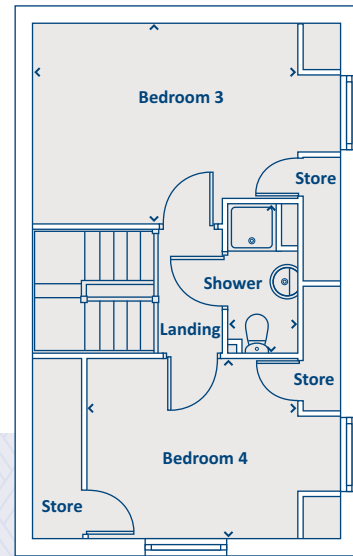
GROUND FLOOR

Kitchen / Dining	3246 x 5073	10'8" x 16'8"
Lounge	2937 x 5073	9'8" x 16'8"
WC	1450 x 1800	4'9" x 5'11"



FIRST FLOOR

Bathroom	2200 x 1900	7'3" x 6'3"
Bedroom 1	3297 x 3665	10'10" x 12'0"
En-suite	3286 x 1307	10'9" x 4'3"
Bedroom 2	2937 x 5073	9'8" x 16'8"



SECOND FLOOR

Bedroom 3	3297 x 4378	10'10" x 14'4"
Bedroom 4	2937 x 3458	9'8" x 11'4"
Shower	2432 x 1149	8'0" x 3'9"

› Longest measurement taken

PLEASE NOTE:

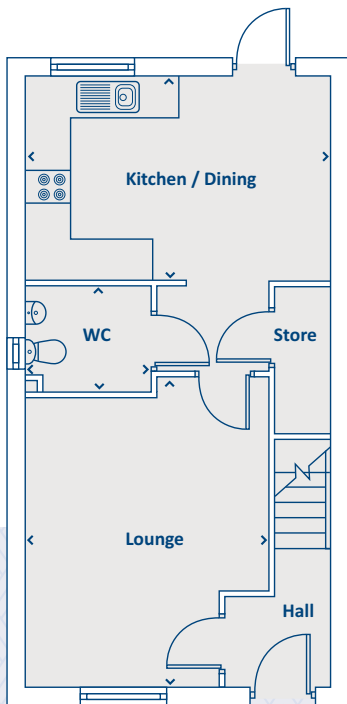
For illustration purposes only. All dimensions are + or - 50mm and these measurements should not be used for the purchase of carpets or furniture. Please see our Sales Executive for full specification and plot details at this development.





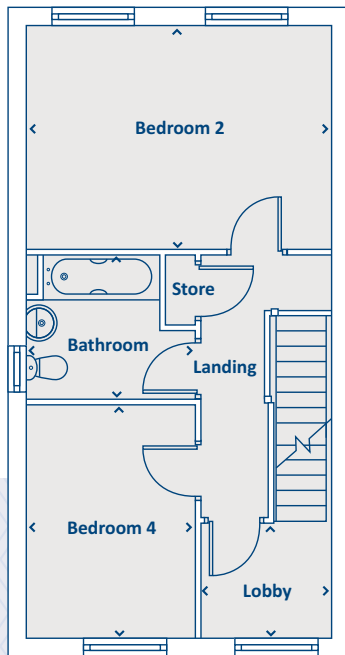
Artists impression, features may vary

THE DARTMOUTH 4 bedroom home



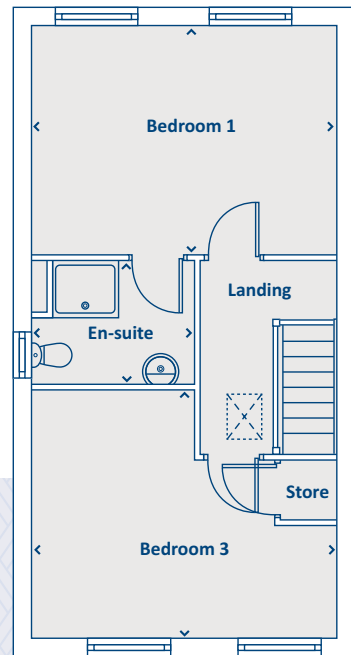
GROUND FLOOR

Kitchen / Dining	3007 x 4499	9'10" x 14'9"
Lounge	4572 x 3551	15'0" x 11'8"
WC	1499 x 1800	4'11" x 5'11"



FIRST FLOOR

Bathroom	2150 x 2465	7'1" x 8'1"
Bedroom 2	3230 x 4499	10'7" x 14'9"
Bedroom 4	3396 x 2465	11'2" x 8'1"
Lobby	1682 x 1941	5'6" x 6'4"



SECOND FLOOR

Bedroom 1	3369 x 4499	11'1" x 14'9"
En-suite	1802 x 2369	5'11" x 7'9"
Bedroom 3	3610 x 4499	11'10" x 14'9"

› Longest measurement taken

PLEASE NOTE:

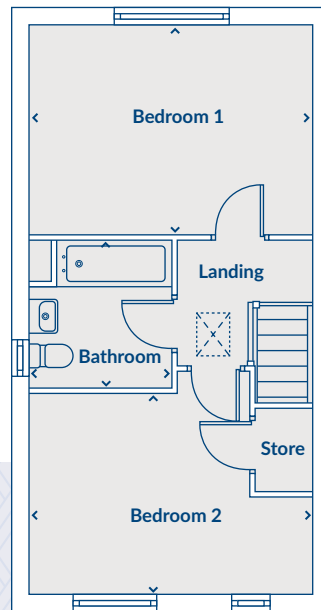
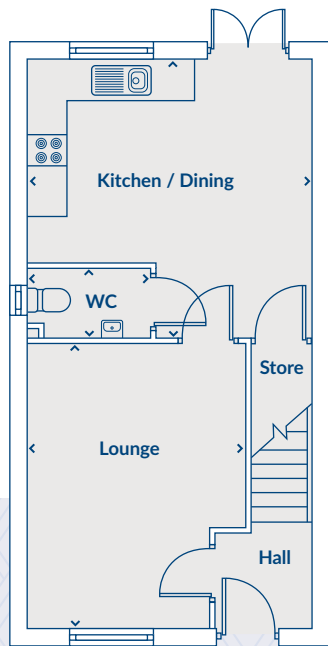
For illustration purposes only. All dimensions are + or - 50mm and these measurements should not be used for the purchase of carpets or furniture. Please see our Sales Executive for full specification and plot details at this development.





Artists impression, features may vary

THE ASHBURN 2 bedroom home



GROUND FLOOR

Kitchen / Dining	4152 x 4199	13'7" x 13'9"
Lounge	4216 x 3251	13'10" x 10'8"
WC	1023 x 1838	3'4" x 6'0"

FIRST FLOOR

Bedroom 1	3113 x 4199	10'3" x 13'9"
Bedroom 2	2950 x 4199	9'8" x 13'9"
Bathroom	2168 x 2080	7'1" x 6'10"

› Longest measurement taken

PLEASE NOTE:

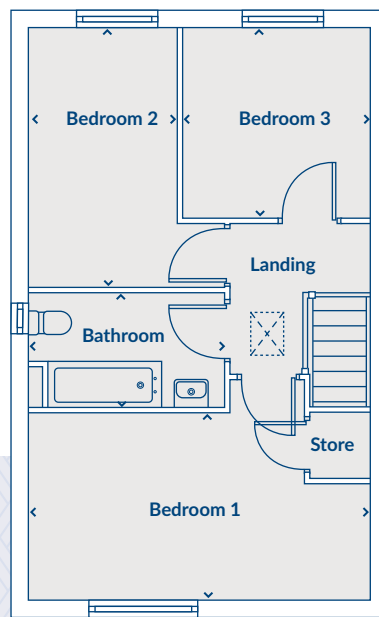
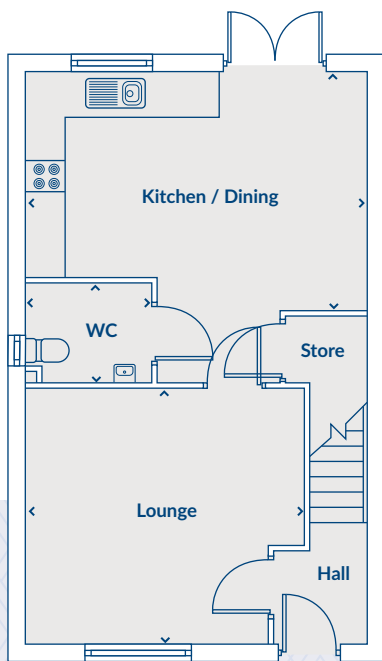
For illustration purposes only. All dimensions are + or - 50mm and these measurements should not be used for the purchase of carpets or furniture. Please see our Sales Executive for full specification and plot details at this development.





Artists impression, features may vary

THE SEACOURT 3 bedroom home



GROUND FLOOR

Kitchen / Dining	5043 x 3522	16'7" x 11'7"
Lounge	4095 x 3760	13'5" x 12'4"
WC	1838 x 1463	6'0" x 4'10"

FIRST FLOOR

Bedroom 1	5043 x 2770	16'7" x 9'1"
Bedroom 2	2200 x 3812	7'3" x 12'6"
Bedroom 3	2750 x 2768	9'0" x 9'1"
Bathroom	2881 x 1656	9'5" x 5'5"

› Longest measurement taken

PLEASE NOTE:

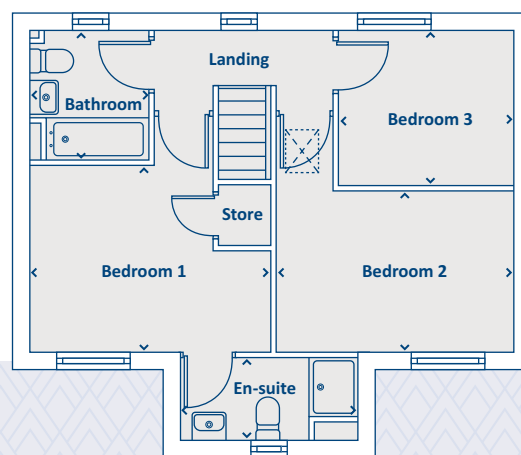
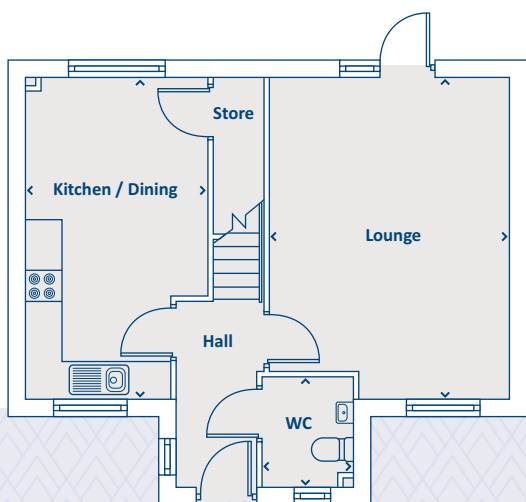
For illustration purposes only. All dimensions are + or - 50mm and these measurements should not be used for the purchase of carpets or furniture. Please see our Sales Executive for full specification and plot details at this development.





Artists impression, features may vary

THE ELDWICK 3 bedroom home



GROUND FLOOR

Kitchen / Dining	3008 x 5310	9'10" x 17'5"
Lounge	3962 x 5310	13'0" x 17'5"
WC	1500 x 1800	4'11" x 5'11"

FIRST FLOOR

Bedroom 1	3956 x 3049	13'0" x 10'0"
En-suite	2948 x 1370	9'8" x 4'6"
Bedroom 2	3962 x 2642	13'0" x 8'8"
Bedroom 3	2917 x 2575	9'7" x 8'5"
Bathroom	1945 x 2150	6'5" x 7'1"

› Longest measurement taken

PLEASE NOTE:

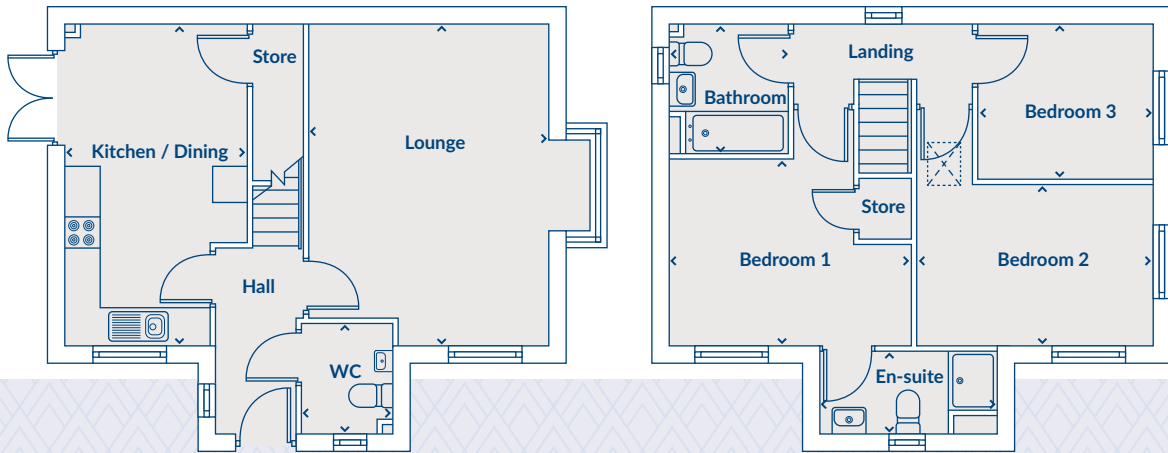
For illustration purposes only. All dimensions are + or - 50mm and these measurements should not be used for the purchase of carpets or furniture. Please see our Sales Executive for full specification and plot details at this development.





Artists impression, features may vary

THE FARLEY 3 bedroom home



GROUND FLOOR

Kitchen / Dining	3008 x 5310	9'10" x 17'5"
Lounge	3962 x 5310	13'0" x 17'5"
WC	1500 x 1800	4'11" x 5'11"

FIRST FLOOR

Bedroom 1	3956 x 3049	13'0" x 10'0"
En-suite	2948 x 1370	9'8" x 4'6"
Bedroom 2	3962 x 2642	13'0" x 8'8"
Bedroom 3	2917 x 2575	9'7" x 8'5"
Bathroom	1945 x 2150	6'5" x 7'1"

› Longest measurement taken

PLEASE NOTE:

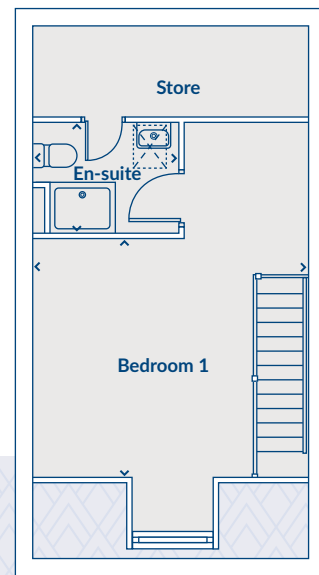
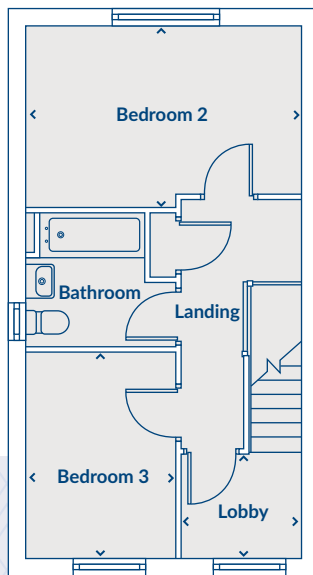
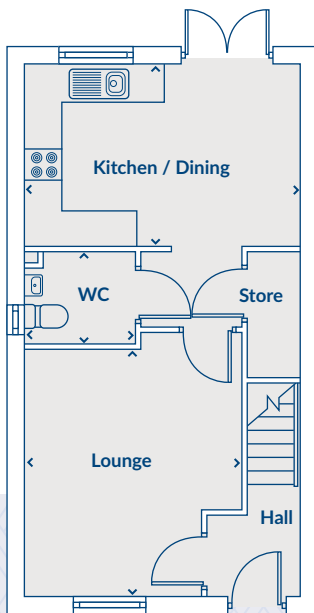
For illustration purposes only. All dimensions are + or - 50mm and these measurements should not be used for the purchase of carpets or furniture. Please see our Sales Executive for full specification and plot details at this development.





Artists impression, features may vary

THE SWARBOURN 3 bedroom home



GROUND FLOOR

Kitchen / Dining	4536 x 3007	14'11" x 9'10"
Lounge	3588 x 4069	11'9" x 13'4"
WC	1800 x 1500	5'11" x 4'11"

FIRST FLOOR

Bedroom 2	4536 x 3010	14'11" x 9'11"
Bedroom 3	2470 x 3408	8'1" x 11'2"
Lobby	1974 x 1682	6'6" x 5'6"
Bathroom	2470 x 2151	8'1" x 7'1"

SECOND FLOOR

Bedroom 1	4536 x 4038	14'11" x 13'3"
En-suite	2380 x 1820	7'10" x 6'0"

› Longest measurement taken

PLEASE NOTE:

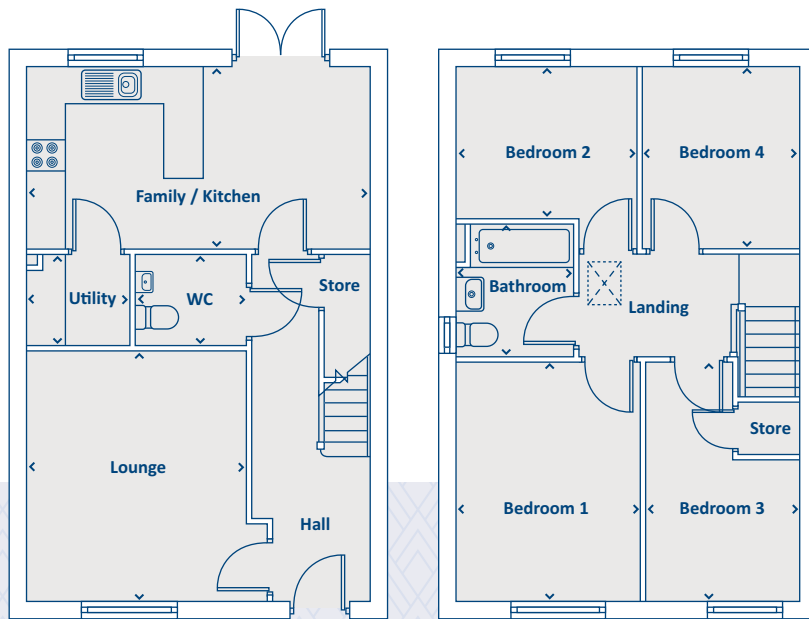
For illustration purposes only. All dimensions are + or - 50mm and these measurements should not be used for the purchase of carpets or furniture. Please see our Sales Executive for full specification and plot details at this development.





Artists impression, features may vary

THE THORNTON 4 bedroom home



GROUND FLOOR

Family Kitchen	5605 x 3000	18'5" x 9'10"
Lounge	3600 x 4126	11'10" x 13'6"
Utility	1671 x 1486	5'6" x 4'11"
WC	1800 x 1450	5'11" x 4'9"

› Longest measurement taken

FIRST FLOOR

Bedroom 1	3050 x 3913	10'0" x 12'10"
Bedroom 2	3012 x 2513	9'11" x 8'3"
Bedroom 3	2463 x 3913	8'1" x 12'10"
Bedroom 4	2500 x 3000	8'2" x 9'10"
Bathroom	1950 x 2142	6'5" x 7'0"

PLEASE NOTE:

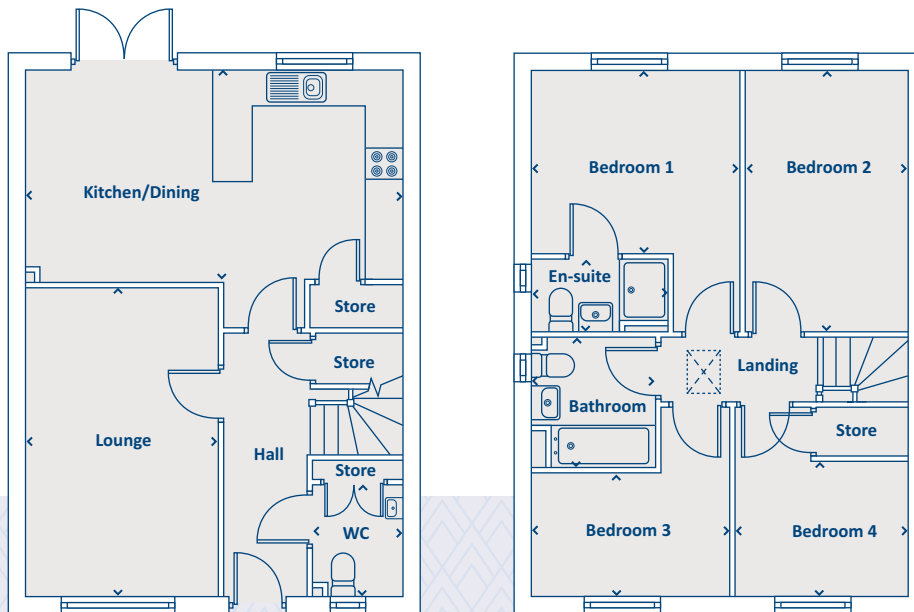
For illustration purposes only. All dimensions are + or - 50mm and these measurements should not be used for the purchase of carpets or furniture. Please see our Sales Executive for full specification and plot details at this development.





Artists impression, features may vary

THE LONGFORD 4 bedroom home



GROUND FLOOR

Kitchen / Dining	3475 X 6168	11'5" X 20'3"
Lounge	5060 X 3150	16'7" X 10'4"
WC	1830 X 1450	6'0" X 4'9"

› Longest measurement taken

FIRST FLOOR

Bedroom 1	3034 X 3400	9'11" X 11'2"
En-suite	1185 X 2206	3'11" X 7'3"
Bedroom 2	4312 X 2675	14'2" X 8'9"
Bedroom 3	2014 X 3215	6'7" X 10'7"
Bedroom 4	2232 X 2860	7'4" X 9'5"
Bathroom	2138 X 2000	7'0" X 6'7"

PLEASE NOTE:

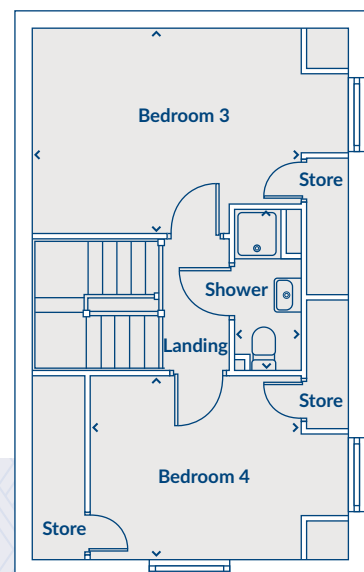
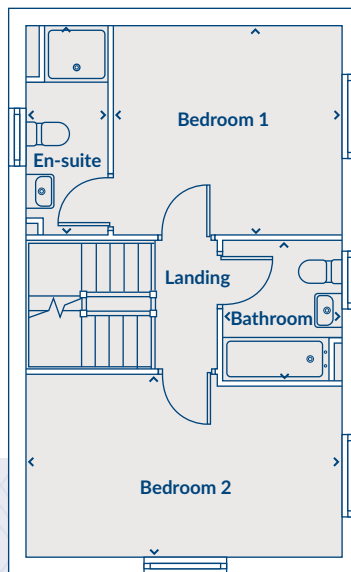
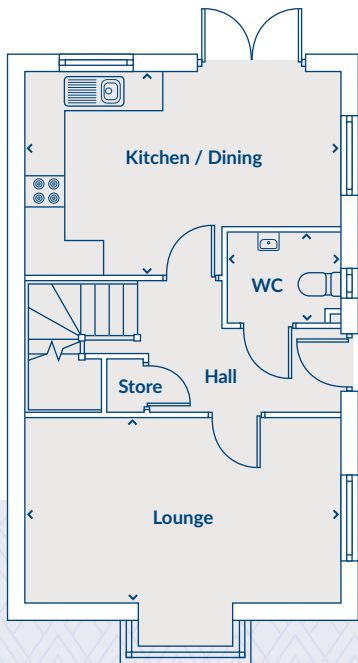
For illustration purposes only. All dimensions are + or - 50mm and these measurements should not be used for the purchase of carpets or furniture. Please see our Sales Executive for full specification and plot details at this development.





Artists impression, features may vary

THE OLDBURY 4 bedroom home



GROUND FLOOR

Kitchen / Dining	3297 x 5085	10'10" x 16'8"
Lounge	2949 x 5085	9'8" x 16'8"
WC	1450 x 1800	4'9" x 5'11"

FIRST FLOOR

Bedroom 1	3297 x 3690	10'10" x 12'1"
En-suite	3289 x 1302	10'9" x 4'3"
Bedroom 2	2937 x 5085	9'8" x 16'8"
Bathroom	2200 x 1900	7'3" x 6'3"

SECOND FLOOR

Bedroom 3	3297 x 4390	10'10" x 14'5"
Bedroom 4	2949 x 3458	9'8" x 11'4"
Shower	2540 x 1150	8'4" x 3'9"

› Longest measurement taken

PLEASE NOTE:

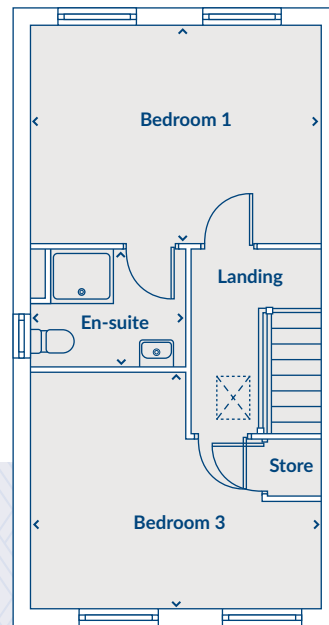
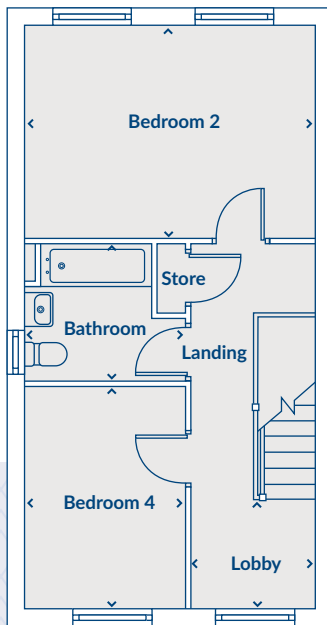
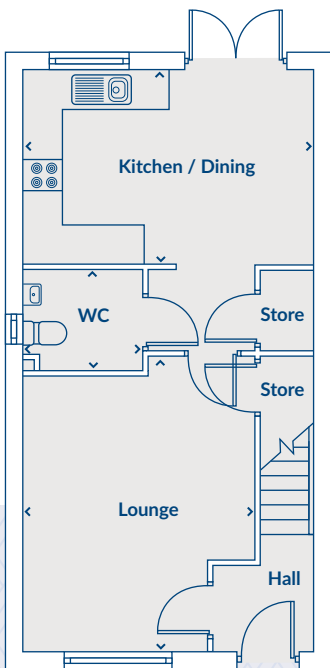
For illustration purposes only. All dimensions are + or - 50mm and these measurements should not be used for the purchase of carpets or furniture. Please see our Sales Executive for full specification and plot details at this development.





Artists impression, features may vary

THE DEVOKE 4 bedroom home



GROUND FLOOR

Kitchen / Dining	3007 x 4536	9'10" x 14'11"
Lounge	4584 x 3588	15'0" x 11'9"
WC	1500 x 1838	4'11" x 6'0"

FIRST FLOOR

Bedroom 2	3243 x 4536	10'8" x 14'11"
Bedroom 4	3405 x 2503	11'2" x 8'3"
Lobby	1682 x 1941	5'6" x 6'4"
Bathroom	2150 x 2503	7'1" x 8'3"

SECOND FLOOR

Bedroom 1	3394 x 4536	11'2" x 14'11"
En-suite	1790 x 2406	5'10" x 7'11"
Bedroom 3	3628 x 4536	11'11" x 14'11"

› Longest measurement taken

PLEASE NOTE:

For illustration purposes only. All dimensions are + or - 50mm and these measurements should not be used for the purchase of carpets or furniture. Please see our Sales Executive for full specification and plot details at this development.



features may vary





KINGFIELDS
PARK

HULL

All enquiries:
01482 770 693



[keepmoat.com](https://www.keepmoat.com)

Keepmoat is the trading name of Keepmoat Homes Limited.
This brochure has been produced as a guide to assist intending purchasers in the selection of their new home. Its content does not form part of any contract.