



Knowle Grove, Leeds, LS4 2PN

£123 Per Person Per Week  
Available from: 1st July 2025

\*VIRTUAL 360 VIEWINGS AVAILABLE\*

BILLS INCLUDED



3



1



1



D

<https://www.sugarhouseproperties.co.uk>



Property Details

Full Description

Really spacious three bedroom house in a lovely location behind Headingley stadium

The property has massive double bedrooms, full bathroom, large bright lounge with flat screen TV, modern sofas and stripped wood flooring. There`s a smart galley kitchen and modern oak furniture throughout.

There are a number of local shops on the doorstep, great transport links (Burley Park train station is just minutes away) and loads of amenities in the shape of shops, bars and cafes all within walking distance.

Our Bills Packages as Standard;

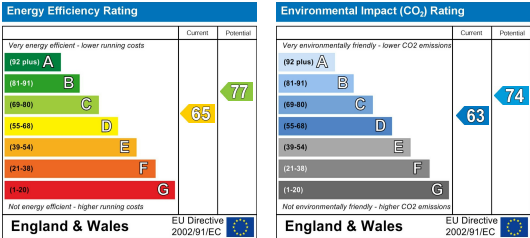
This property comes with an all inclusive bills and service package; we`ll set up everything up for you and you won`t have to worry about a thing. Our gas and electric is UNCAPPED, our broadband is superfast 350mbps\* and our friendly team is on hand to help with any queries you have. Our bills included packages are designed to provide you with the best products whilst taking the hassle out of arranging and managing bills including all admin, readings and installations taken care of on your behalf.

\*Please note our standard packages are available on almost all of our properties. Some individual properties may vary slightly. Any variations will be detailed during the application process.

Key Property Features

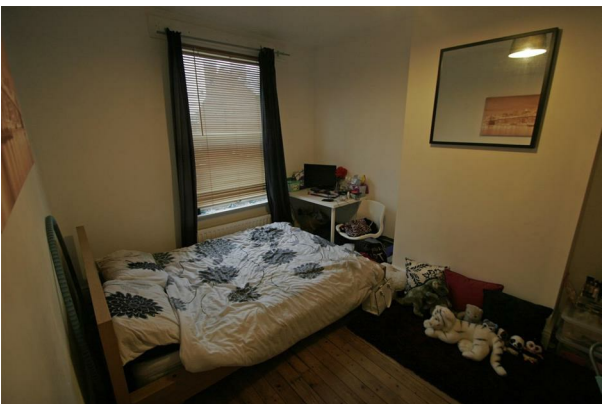
- Superfast Broadband & Uncapped Energy
- Spacious Kitchen
- TV's Included
- Modern Bathrooms
- Close to Public Transport
- Stylish Bedrooms
- Characterful Property
- Close to Bars
- Even Sized Bedrooms

Council Tax Band A  
Energy Efficiency Graph



Hassle Free, Contactless Lettings

Ask us about our 360 degree virtual viewings and digital online tenancy applications.



0113 816 0131