



Brudenell Road, Leeds, LS6 1HA

£145 Per Person Per Week  
Available from: 1st July 2024

\*VIRTUAL 360 VIEWINGS AVAILABLE\*

**BILLS INCLUDED**



<https://www.sugarhouseproperties.co.uk>

## Property Details

### Full Description

This student home will not disappoint!

Hyde Park boasts local shops, social hangs outs and Hyde Park itself! Located in the heart of the area this house is well presented, modern throughout and with fantastic sized bedrooms.

Eleven double bedrooms, a spacious dining kitchen, a lovely lounge with modern furnishings & three modern fully tiled bathrooms.

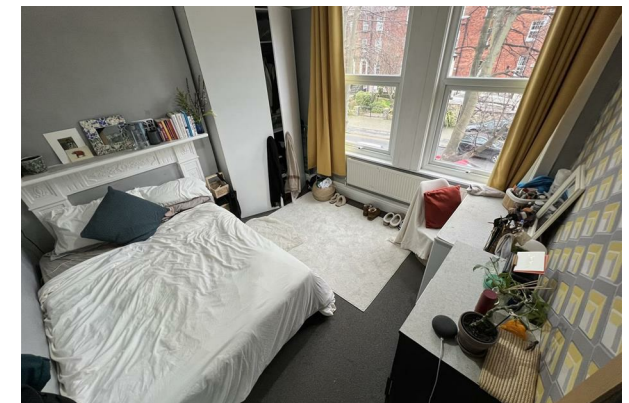
Completely overhauled in the summer of 2018 making this the best eleven bed on the market!

The price includes gas, electric, water, TV license and broadband provided by the landlord.

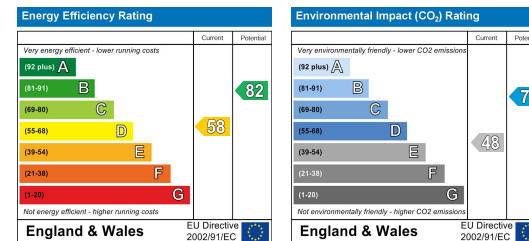
Call now to find out more!

## Key Property Features

- Bills Included
- Central Hyde Park Location
- Three Bathrooms
- Double Bedrooms
- Close To Shops
- Close To Uni
- TV Included
- Front & Rear Yards
- Recent Refurb
- Council Tax Band D



## Energy Efficiency Graph



## Hassle Free, Contactless Lettings

Ask us about our 360 degree virtual viewings and digital online tenancy applications.

0113 816 0131

Sugarhouse (Leeds) Ltd  
Registration Number 7594132 VAT Number 252251053  
Registered Office 47 Headingley Lane, Headingley, Leeds LS6  
Place of Registration England and Wales

www.sugarhouseproperties.co.uk /sugarhouseproperties @Sugarhouseleeds