

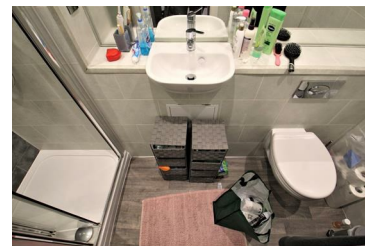
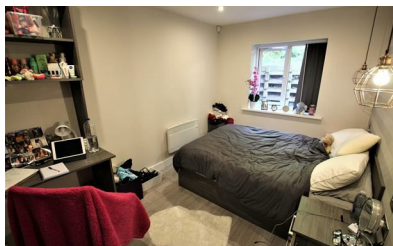
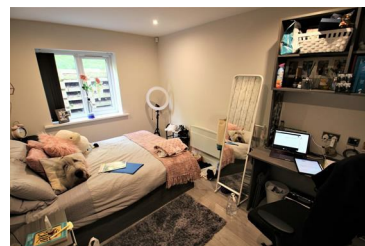


Hartisca Residence, Hartwell Road, Leeds, LS6 1RY
£999 Per Calendar Month
Available from 1st July 2021

2 2 1

Fantastic development of recently refurbished units in the heart of Hyde Park with one and two bedroom properties available from July 1st. Complete with en suite bedrooms, open plan lounges and modern decor throughout.

- Modern Interior
- Recently Refurbished
- En-suited
- Integrated Appliances
- Virtual Tour
- Close to Universities
- Stylish Bedrooms
- Spot lit Kitchen
- Open Plan
- Call Now!



0113 816 0131
info@sugarhouseproperties.co.uk



1st floor, 21 Otley Road, Headingley, Leeds LS6 3AA
www.sugarhouseproperties.co.uk



/sugarhouseproperties
 @Sugarhouseleeds