



Westfield Court, Westfield Road, Leeds, LS3 1DL

£110 Per Person Per Week
Available from: 1st July 2021

VIRTUAL 360 VIEWINGS AVAILABLE

BILLS INCLUDED



www.sugarhouseproperties.co.uk

Property Details

Full Description

A ground floor four bedroom apartment located just on the edge of the City, ideal for students and professionals alike.

Refurbished in the last few years, this stylish apartment has four even sized bedrooms with built in floor to ceiling storage, huge living space which is open plan to the kitchen which comes complete with washer/dryer!

This apartment has been finished to the highest standard with New York style bathrooms, fully tiled kitchen, laminate flooring and much more!

Our Bills Packages as Standard;

This property comes with a luxury bills and service package; we'll set up everything up for you and you won't have to worry about a thing. We've also picked the very best suppliers; from superfast broadband, environmentally friendly energy suppliers and the NUS approved insurance provider, Endsleigh for contents insurance. Our bills included packages are designed to provide you with the best products whilst taking the hassle out of arranging and managing bills including all admin, readings and installations taken care of on your behalf.

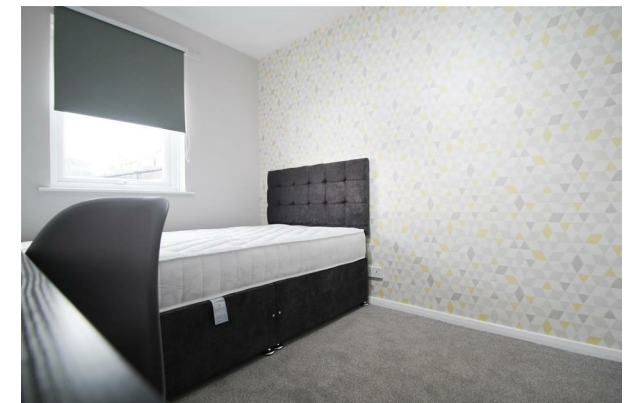
Some of the key points of our chosen suppliers;

- 100% Green Electricity
- 100% Carbon Neutral Gas
- Superfast 350mb Broadband (Business grade, with no download limits)
- £6,000 insurance contents cover per person
- TV License for communal areas of property
- Water supply from Yorkshire Water

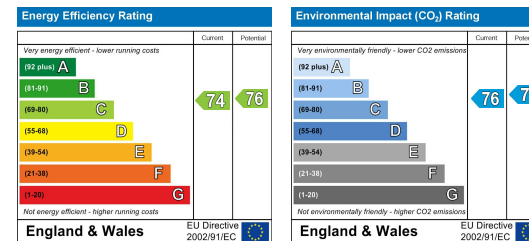
Please note our standard packages are available on almost all of our properties. Some individual properties may vary slightly. Any variations will be detailed during the application process.

Key Property Features

- Superfast Broadband & Green Energy
- Recently Refurbished
- Stylish Interior
- Feature Wallpapered Rooms
- New-York Style Bathrooms
- Dishwasher
- Secure Intercom Access
- Close to Uni
- Open Plan Kitchen / Living
- Two Bathrooms



Energy Efficiency Graph



Hassle Free, Contactless Lettings

Ask us about our 360 degree virtual viewings and digital online tenancy applications.

These particulars, whilst believed to be accurate, are set out as a general outline for guidance only. If in the event, any error or omission made in these particulars, the Agent or Landlord cannot be held liable as this is brochure is for information only.



0113 816 0131
info@sugarhouseproperties.co.uk

1st floor, 21 Otley Road, Headingley, Leeds LS6 3AA
www.sugarhouseproperties.co.uk

/sugarhouseproperties
@Sugarhouseleeds