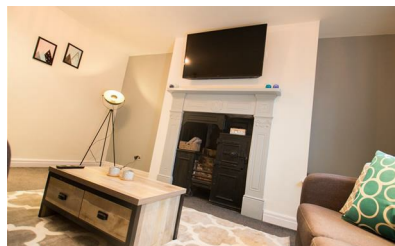
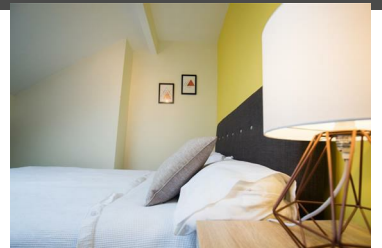




**75 Headingley Avenue, Leeds, LS6 3ER**  
**£100 Per Person Per Week**  
**Available from 1st October 2020**



DELUXE BILLS INCLUDED!! SUPERFAST 350MB BROADBAND, GREEN GAS & ELECTRICITY, WATER, TV LICENSE, CONTENTS INSURANCE, GARDENING AND MORE! Super-sized terrace property in the heart of Headingley with large double bedrooms throughout. The property is fully refurbished, with two brand new bathrooms (one with bath, one with large walk in shower), large bedrooms with wall mounted TV's and an enviable location for the bars, shops and amenities of Headingley.



0113 816 0131  
[info@sugarhouseproperties.co.uk](mailto:info@sugarhouseproperties.co.uk)

1st floor, 21 Otley Road, Headingley, Leeds LS6 3AA  
[www.sugarhouseproperties.co.uk](http://www.sugarhouseproperties.co.uk)

/sugarhouseproperties  
 @Sugarhouseleeds