



Royal Park Avenue, Hyde Park, LS6 1EZ

£156 Per Person Per Week  
Available from: 1st July 2026

\*VIRTUAL 360 VIEWINGS AVAILABLE\*

**BILLS INCLUDED**



<https://www.sugarhouseproperties.co.uk>

## Property Details

### Full Description

£156PW INC BILLS

A spectacular 4 bed mid terrace property located in central Hyde Park. With 4 good sized bedrooms, 2 bathrooms, kitchen and separate lounge, this property offers the perfect space for uni life.

All great sized double rooms with built in furniture, maximising space!

Location is key and this is slap bang on one of the most desirable streets in Hyde Park! Only a few minutes walk to University of Leeds.

Our Bills Packages as Standard;

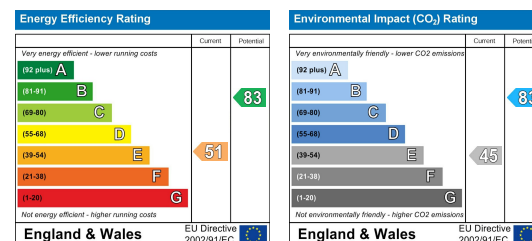
This property comes with an all inclusive bills and service package; we'll set up everything up for you and you won't have to worry about a thing. Our gas and electric is UNCAPPED, our broadband is superfast 350mbps\* and our friendly team is on hand to help with any queries you have. Our bills included packages are designed to provide you with the best products whilst taking the hassle out of arranging and managing bills including all admin, readings and installations taken care of on your behalf.

\*Please note our standard packages are available on almost all of our properties. Some individual properties may vary slightly. Any variations will be detailed during the application process.

## Key Property Features

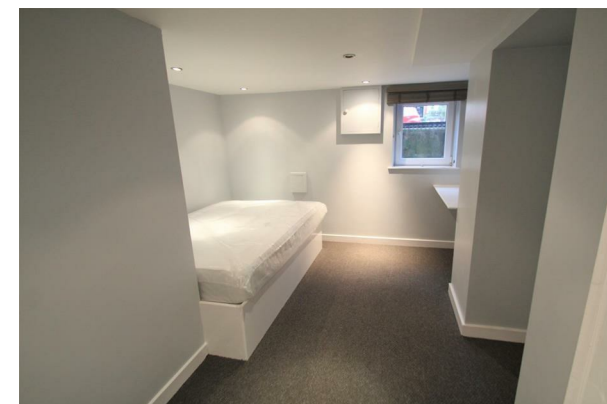
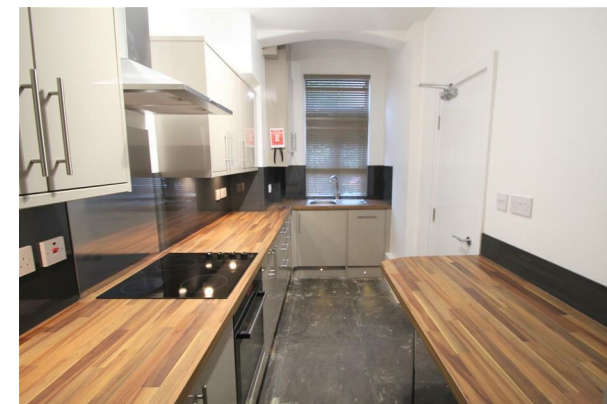
- £156PW INC BILLS
- Modern Interior
- Close to Uni
- Double Bedrooms
- Fitted Bedroom Furniture
- Separate Lounge
- Two Bathrooms
- Central Hyde Park
- EPC Rating E
- Council tax band A

## Energy Efficiency Graph



## Hassle Free, Contactless Lettings

Ask us about our 360 degree virtual viewings and digital online tenancy applications.



0113 816 0131



Sugarhouse (Leeds) Ltd  
Registration Number 7594132 VAT Number 252251053  
Registered Office 47 Headingley Lane, Headingley, Leeds LS6  
Place of Registration England and Wales



www.sugarhouseproperties.co.uk



/sugarhouseproperties



@Sugarhouseleeds