



Thornville Row, Leeds, LS6 1JN

£143 Per Person Per Week
Available from: 1st July 2026

VIRTUAL 360 VIEWINGS AVAILABLE

BILLS INCLUDED



<https://www.sugarhouseproperties.co.uk>

Property Details

Full Description

£143PW INC BILLS

Wow! This is not to be missed! This surely will not be around for long! Gorgeous fitted kitchen and dining area with a separate lounge. Large double bedrooms all with double beds, two amazing bathrooms in a four bed property makes this house an absolute must to view.

Ideally situated, just minutes walk away from the Hyde Park Picture House, this large end terrace is in easy walking distance of both Uni and Headingley campuses, with close transport links allowing easy access to the Leeds City Centre.

The property also has a secure cycle shed for bike storage.

Our Bills Packages as Standard;

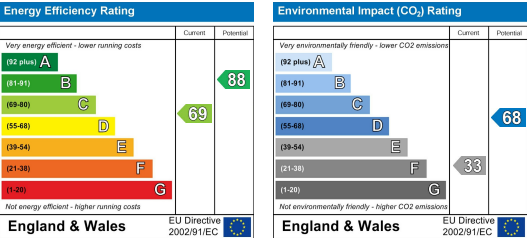
This property comes with an all inclusive bills and service package; we'll set up everything up for you and you won't have to worry about a thing. Our gas and electric is UNCAPPED, our broadband is superfast 350mbps* and our friendly team is on hand to help with any queries you have. Our bills included packages are designed to provide you with the best products whilst taking the hassle out of arranging and managing bills including all admin, readings and installations taken care of on your behalf.

*Please note our standard packages are available on almost all of our properties. Some individual properties may vary slightly. Any variations will be detailed during the application process.

Key Property Features

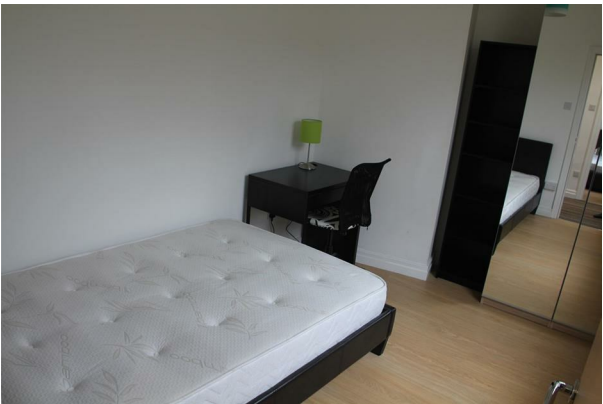
- £143PW INC BILLS
- Recent Refurbishment
- Close to University
- Large Double Bedrooms
- Two Bathrooms
- Spacious Communal Areas
- Dining Area
- Close to Local Bars & Shops
- EPC Rating D
- Council Tax Band B

Energy Efficiency Graph



Hassle Free, Contactless Lettings

Ask us about our 360 degree virtual viewings and digital online tenancy applications.



0113 816 0131