



Royal Park Road, Leeds, LS6 1JJ

£138 Per Person Per Week
Available from: 1st July 2025

VIRTUAL 360 VIEWINGS AVAILABLE

BILLS INCLUDED



<https://www.sugarhouseproperties.co.uk>

Property Details

Full Description

Great homely property in much sought after location!

The property has lots to offer, including a large dining kitchen and spacious separate lounge. There are four large double bedrooms with feature wallpaper and contemporary furnishings. Two fully tiled bathrooms completed the set up - both with overhead showers and one bath.

The property is within a few minutes walk of Leeds University and the surrounding areas.

Our Bills Packages as Standard;

This property comes with an all inclusive bills and service package; we'll set up everything up for you and you won't have to worry about a thing. Our gas and electric is UNCAPPED, our broadband is superfast 350mbps* and our friendly team is on hand to help with any queries you have. Our bills included packages are designed to provide you with the best products whilst taking the hassle out of arranging and managing bills including all admin, readings and installations taken care of on your behalf.

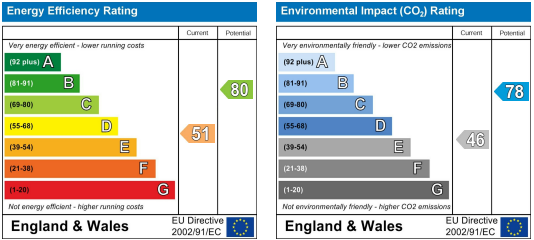
*Please note our standard packages are available on almost all of our properties. Some individual properties may vary slightly. Any variations will be detailed during the application process.

Key Property Features

- Superfast Broadband & Uncapped Gas and Electric
- Central Hyde Park
- Close to Uni
- Large Kitchen
- Two Bathrooms
- Large Lounge
- Double Bedrooms
- Outside Space
- No Basement Bedrooms

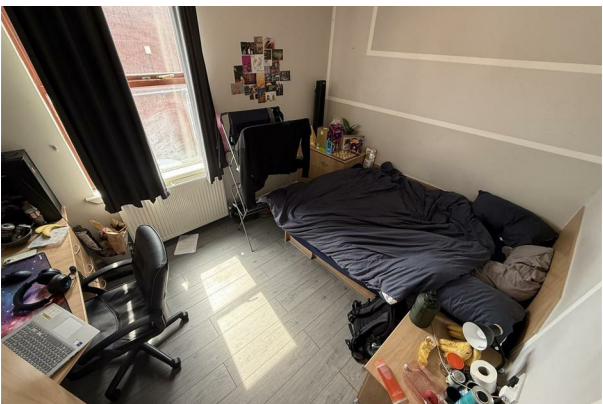
■ Council tax band B

Energy Efficiency Graph



Hassle Free, Contactless Lettings

Ask us about our 360 degree virtual viewings and digital online tenancy applications.



0113 816 0131