



Brudenell Mount, Leeds, LS6 1HT

£149 Per Person Per Week
Available from: 1st July 2025

VIRTUAL 360 VIEWINGS AVAILABLE

BILLS INCLUDED



<https://www.sugarhouseproperties.co.uk>

Property Details

Full Description

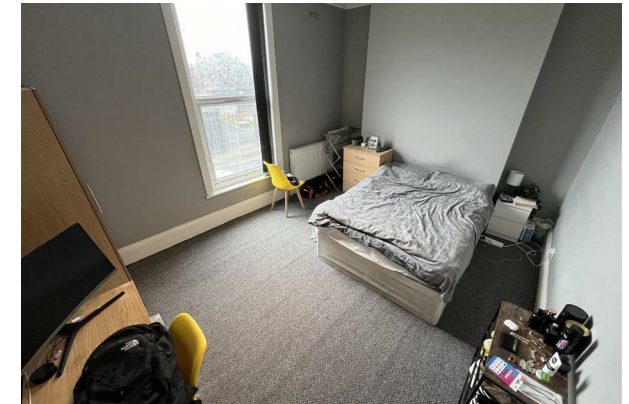
This has to be one of the best finds in Hyde Park! 8 large double beds, dining kitchen, separate lounge with wall mounted flatscreen TV, two fully tiled bathrooms and a third separate WC. This property has been comprehensively refurbished throughout to the highest standard. All of this and on one of the best streets in Hyde Park!!

The price also includes gas, electric, water, TV license and internet!

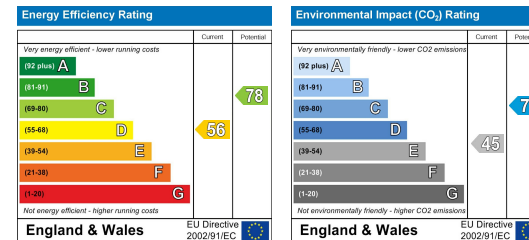
View now to avoid missing out!

Key Property Features

- Bills Included
- Central Hyde Park Location
- Double Bedrooms
- Close To Shops
- Close To Uni
- Dishwasher
- Washing Machine
- High Spec Kitchen
- Two Bathrooms
- Council Tax Band C



Energy Efficiency Graph



Hassle Free, Contactless Lettings

Ask us about our 360 degree virtual viewings and digital online tenancy applications.

0113 816 0131

Sugarhouse (Leeds) Ltd
Registration Number 7594132 VAT Number 252251053
Registered Office 47 Headingley Lane, Headingley, Leeds LS6
Place of Registration England and Wales

www.sugarhouseproperties.co.uk /sugarhouseproperties @Sugarhouseleeds