



Broomfield Terrace, Leeds, LS6 3DQ

£111 Per Person Per Week  
Available from: 1st July 2025

\*VIRTUAL 360 VIEWINGS AVAILABLE\*

**BILLS INCLUDED**



<https://www.sugarhouseproperties.co.uk>

Property Details

Full Description

This four bedroom mid terrace is located a two minute walk from Burley Park Station making commuting to Leeds simple!

This property benefits from modern carpets, a recent redecor, modern bathroom and high spec LED lighting throughout.

There are four great sized bedrooms, an open plan kitchen/lounge, two bathrooms and off road parking out to the front of the property! Our Bills Packages as Standard;

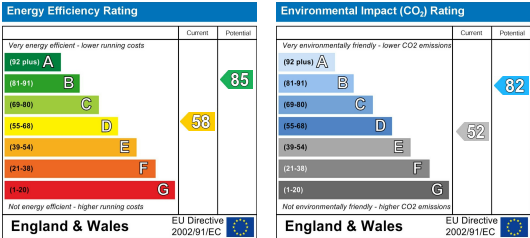
This property comes with an all inclusive bills and service package; we`ll set up everything up for you and you won`t have to worry about a thing. Our gas and electric is UNCAPPED, our broadband is superfast 350mbps\* and our friendly team is on hand to help with any queries you have. Our bills included packages are designed to provide you with the best products whilst taking the hassle out of arranging and managing bills including all admin, readings and installations taken care of on your behalf.

\*Please note our standard packages are available on almost all of our properties. Some individual properties may vary slightly. Any variations will be detailed during the application process.

Key Property Features

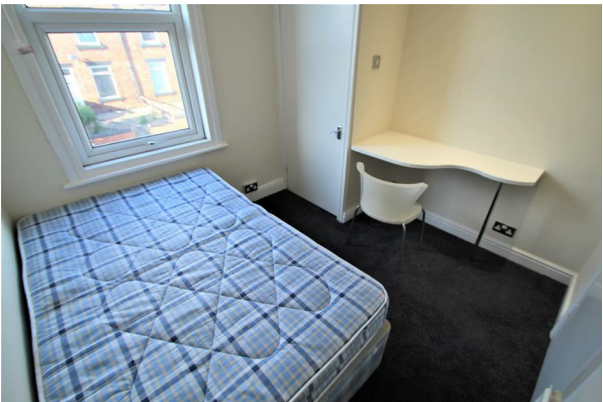
- Superfast Broadband & Uncapped Energy
- Modern Bathrooms
- Open Plan Kitchen/Living Room
- Close To Public Transport
- Large Double Bedrooms
- Off Road Parking
- Near To Supermarkets
- Virtual Tour Available
- Call Now!

Council Tax Band A  
Energy Efficiency Graph



Hassle Free, Contactless Lettings

Ask us about our 360 degree virtual viewings and digital online tenancy applications.



0113 816 0131