



Hessle Place, Leeds, LS6 1EU

£134 Per Person Per Week
Available from: 1st July 2025

VIRTUAL 360 VIEWINGS AVAILABLE

BILLS INCLUDED



<https://www.sugarhouseproperties.co.uk>

Property Details

Full Description

Large through terrace in prime Hyde Park location!

This property is in a spot on location just near the Hyde park cinema on Brudenell Road!

The house offers 5 large double bedrooms, a spacious lounge and separate dining kitchen and 2 modern fully tiled bathrooms. The property is furnished to a high standard throughout and has a lovely mode homely feel!

Great house, great location and great price!

Our Bills Packages as Standard;

This property comes with a luxury bills and service package; we'll set up everything up for you and you won't have to worry about a thing. We've also picked the very best suppliers; from superfast broadband, environmentally friendly energy suppliers and the NUS approved insurance provider, Endsleigh for contents insurance. Our bills included packages are designed to provide you with the best products whilst taking the hassle out of arranging and managing bills including all admin, readings and installations taken care of on your behalf.

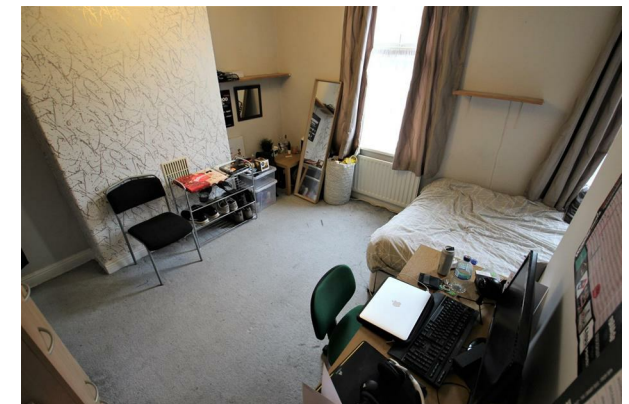
Some of the key points of our chosen suppliers;

- 100% Green Electricity
- 100% Carbon Neutral Gas
- Superfast 350mb Broadband (Business grade, with no download limits)
- £6,000 insurance contents cover per person
- TV License for communal areas of property
- Water supply from Yorkshire Water

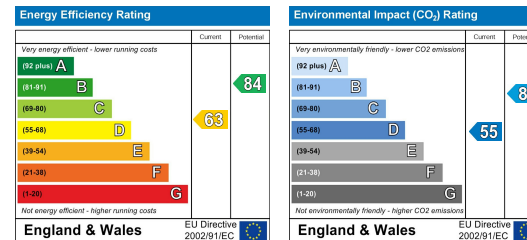
Please note our standard packages are available on almost all of our properties. Some individual properties may vary slightly. Any variations will

Key Property Features

- Superfast Broadband & Green Energy
- Close to Shops
- Double Bedrooms
- Lots of Storage Space
- Spacious Kitchen
- Stylish Bedrooms
- Close to Woodhouse Moor
- Fully Tiled Bathroom
- Large Bedrooms
- Council tax band A



Energy Efficiency Graph



Hassle Free, Contactless Lettings

Ask us about our 360 degree virtual viewings and digital online tenancy applications.

0113 816 0131

Sugarhouse (Leeds) Ltd
Registration Number 7594132 VAT Number 252251053
Registered Office 47 Headingley Lane, Headingley, Leeds LS6
Place of Registration England and Wales

www.sugarhouseproperties.co.uk /sugarhouseproperties @Sugarhouseleeds