



Royal Park Mount, Leeds, LS6 1HL

£149 Per Person Per Week  
Available from: 1st July 2025

**\*VIRTUAL 360 VIEWINGS AVAILABLE\***



<https://www.sugarhouseproperties.co.uk>



## Property Details

### Full Description

This property has been fitted out to the highest standard and has to be seen to be believed! Features include - high spec fully fitted gloss kitchen with breakfast bar and leather and chrome bar stools. A spacious lounge area with laminate flooring, large bay windows, leather sofas and stylish coffee table. There are five double bedrooms with high quality fully fitted furniture including double beds with storage drawers, a fully fitted wardrobe, desk and chair and TV points to all bedrooms. There are two stylish bathrooms including bath and shower and contemporary tiling with stylish mosaic tiling on the walls. The property has been carpeted, sparing no expense, with a modern striped carpet on all hallways and stairways and a plush natural weaved carpet to the bedrooms.

Outside the house is a patio area perfect for those summer barbies!!!

Our Bills Packages as Standard;

This property comes with a luxury bills and service package; we'll set up everything up for you and you won't have to worry about a thing. We've also picked the very best suppliers; from superfast broadband, environmentally friendly energy suppliers and the NUS approved insurance provider, Endsleigh for contents insurance. Our bills included packages are designed to provide you with the best products whilst taking the hassle out of arranging and managing bills including all admin, readings and installations taken care of on your behalf.

Some of the key points of our chosen suppliers;

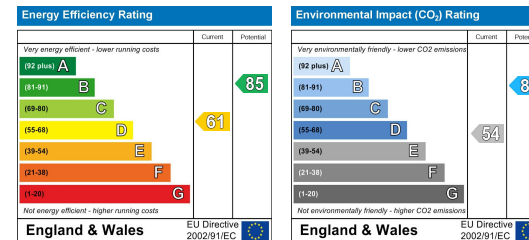
- 100% Green Electricity
- 100% Carbon Neutral Gas
- Superfast 350mb Broadband (Business grade, with no download limits)
- £6,000 insurance contents cover per person
- TV License for communal areas of property
- Water supply from Yorkshire Water

Please note our standard packages are available on almost all of our properties. Some individual properties may vary slightly. Any variations will be detailed during the application process

## Key Property Features

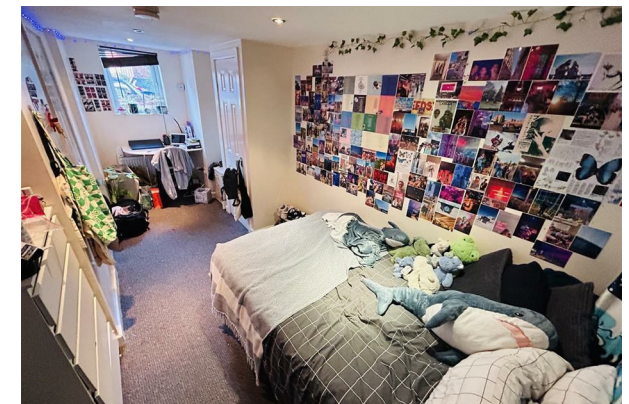
- SUPERFAST BROADBAND & GREEN ENERGY
- DOUBLE BEDROOMS
- CLOSE TO UNI
- CLOSE TO SHOPS
- BURGLAR ALARM
- SPACIOUS OPEN PLAN LIVING
- 5 MINS WALK TO UNI
- CLOSE TO THE PARK
- CENTRAL HYDE PARK
- Council Tax Band A

### Energy Efficiency Graph



### Hassle Free, Contactless Lettings

Ask us about our 360 degree virtual viewings and digital online tenancy applications.



These particulars, whilst believed to be accurate, are set out as a general outline for guidance only. If in the event, any error or omission made in these particulars, the Agent or Landlord cannot be held liable as this is brochure is for information only.

0113 816 0131

Sugarhouse (Leeds) Ltd  
 Registration Number 7594132 VAT Number 252251053  
 Registered Office 47 Headingley Lane, Headingley, Leeds LS6  
 Place of Registration England and Wales

www.sugarhouseproperties.co.uk /sugarhouseproperties @Sugarhouseleeds