



Hessle View, Leeds, LS6 1ER

£145 Per Person Per Week
Available from: 1st July 2025

VIRTUAL 360 VIEWINGS AVAILABLE

BILLS INCLUDED



<https://www.sugarhouseproperties.co.uk>

Property Details

Full Description

Do you want a spectacular recently refurbished property in a Prime Hyde Park Location within a few minutes walk from Leeds Uni and close to all the amenities in Hyde Park? Then you've just found your Sugarhouse!!

This property has recently been modernised, and is one the best in Hyde Park!

The property offers 6 large double bedrooms, a spacious high gloss fully fitted dining kitchen with fully fitted appliances including a dishwasher, a spacious separate lounge complete with hard wood flooring and leather sofa and a large wall mounted flat screen TV, 3 fully tiled modern bathrooms with walk in showers, baths and chrome fittings. There are flat screen TVs wall mounted in all bedrooms and also in the kitchen!

This is the house to show off to your mates! View quickly to avoid disappointment!

Our Bills Packages as Standard;

This property comes with a luxury bills and service package; we'll set up everything up for you and you won't have to worry about a thing. We've also picked the very best suppliers; from superfast broadband, environmentally friendly energy suppliers and the NUS approved insurance provider, Endsleigh for contents insurance. Our bills included packages are designed to provide you with the best products whilst taking the hassle out of arranging and managing bills including all admin, readings and installations taken care of on your behalf.

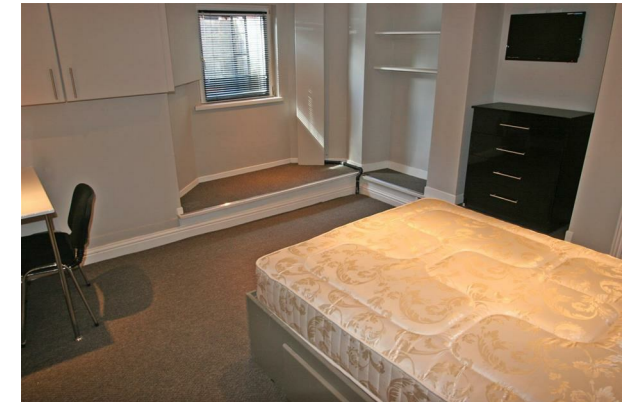
Some of the key points of our chosen suppliers;

- 100% Green Electricity
- 100% Carbon Neutral Gas
- Superfast 350mb Broadband (Business grade, with no download limits)
- £6,000 insurance contents cover per person
- TV License for communal areas of property
- Water supply from Yorkshire Water

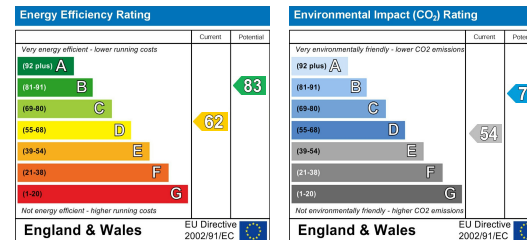
Please note our standard packages are available on almost all of our properties. Some individual properties may vary slightly. Any variations will be detailed during the application process.

Key Property Features

- Superfast Broadband & Green Energy
- Recently Refurbished
- Central Hyde Park Location
- 3 Bathrooms
- TV's Included
- Ultra Modern
- Street Parking
- Close To Shops
- Dishwasher
- Council tax band B



Energy Efficiency Graph



Hassle Free, Contactless Lettings

Ask us about our 360 degree virtual viewings and digital online tenancy applications.

0113 816 0131



Sugarhouse (Leeds) Ltd
 Registration Number 7594132 VAT Number 252251053
 Registered Office 47 Headingley Lane, Headingley, Leeds LS6
 Place of Registration England and Wales



www.sugarhouseproperties.co.uk



/sugarhouseproperties



@Sugarhouseleeds