



Knowle Grove, Leeds, LS4 2PN

£123 Per Person Per Week
Available from: 1st July 2025

VIRTUAL 360 VIEWINGS AVAILABLE

BILLS INCLUDED



<https://www.sugarhouseproperties.co.uk>

Property Details

Full Description

Really spacious three bedroom house in a lovely location behind Headingley stadium

The property has massive double bedrooms, full bathroom, large bright lounge with flat screen TV, modern sofas and stripped wood flooring. There`s a smart galley kitchen and modern oak furniture throughout.

There are a number of local shops on the doorstep, great transport links (Burley Park train station is just minutes away) and loads of amenities in the shape of shops, bars and cafes all within walking distance.

Our Bills Packages as Standard;

This property comes with a luxury bills and service package; we`ll set up everything up for you and you won`t have to worry about a thing. We`ve also picked the very best suppliers; from superfast broadband, environmentally friendly energy suppliers and the NUS approved insurance provider, Endsleigh for contents insurance. Our bills included packages are designed to provide you with the best products whilst taking the hassle out of arranging and managing bills including all admin, readings and installations taken care of on your behalf.

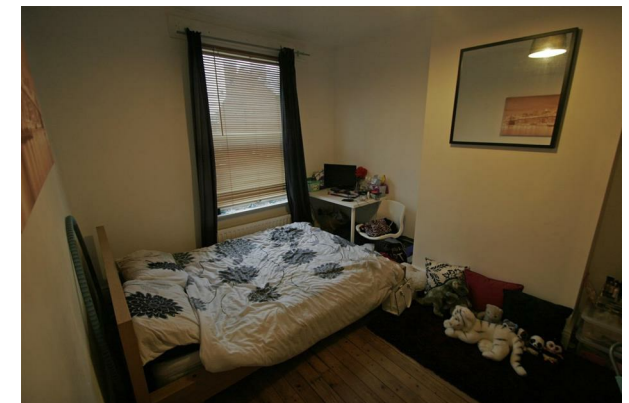
Some of the key points of our chosen suppliers;

- 100% Green Electricity
- 100% Carbon Neutral Gas
- Superfast 350mb Broadband (Business grade, with no download limits)
- £6,000 insurance contents cover per person
- TV License for communal areas of property
- Water supply from Yorkshire Water

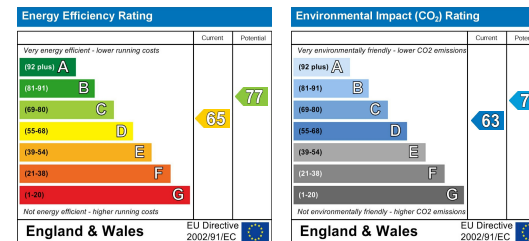
Please note our standard packages are available on almost all of our properties. Some individual properties may vary slightly. Any variations will be detailed during the application process.

Key Property Features

- Superfast Broadband & Green Energy
- Spacious Kitchen
- TV's Included
- Modern Bathrooms
- Close to Public Transport
- Stylish Bedrooms
- Characterful Property
- Close to Bars
- Even Sized Bedrooms
- Council Tax Band A



Energy Efficiency Graph



Hassle Free, Contactless Lettings

Ask us about our 360 degree virtual viewings and digital online tenancy applications.

0113 816 0131

Sugarhouse (Leeds) Ltd
Registration Number 7594132 VAT Number 252251053
Registered Office 47 Headingley Lane, Headingley, Leeds LS6
Place of Registration England and Wales

www.sugarhouseproperties.co.uk /sugarhouseproperties @Sugarhouseleeds