



Thornville Row, Leeds, LS6 1JN

£143 Per Person Per Week  
Available from: 1st July 2025

\*VIRTUAL 360 VIEWINGS AVAILABLE\*

**BILLS INCLUDED**



<https://www.sugarhouseproperties.co.uk>

## Property Details

### Full Description

Wow! This is not to be missed! This surely will not be around for long! Gorgeous fitted kitchen and dining area with a separate lounge. Large double bedrooms all with double beds, two amazing bathrooms in a four bed property makes this house an absolute must to view.

Ideally situated, just minutes walk away from the Hyde Park Picture House, this large end terrace is in easy walking distance of both Uni and Headingley campuses, with close transport links allowing easy access to the Leeds City Centre.

The property also has a secure cycle shed for bike storage.

Our Bills Packages as Standard;

This property comes with a luxury bills and service package; we'll set up everything up for you and you won't have to worry about a thing. We've also picked the very best suppliers; from superfast broadband, environmentally friendly energy suppliers and the NUS approved insurance provider, Endsleigh for contents insurance. Our bills included packages are designed to provide you with the best products whilst taking the hassle out of arranging and managing bills including all admin, readings and installations taken care of on your behalf.

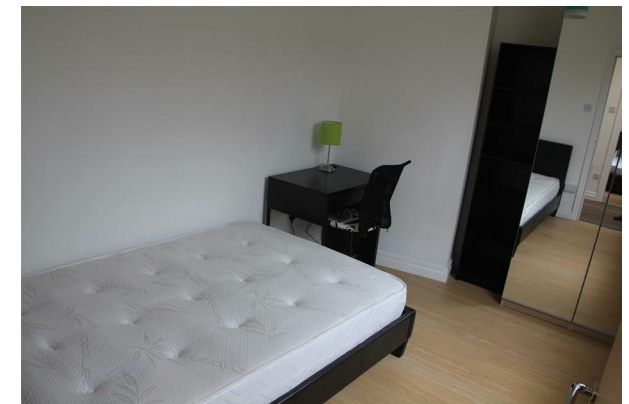
Some of the key points of our chosen suppliers;

- 100% Green Electricity
- 100% Carbon Neutral Gas
- Superfast 350mb Broadband (Business grade, with no download limits)
- £6,000 insurance contents cover per person
- TV License for communal areas of property
- Water supply from Yorkshire Water

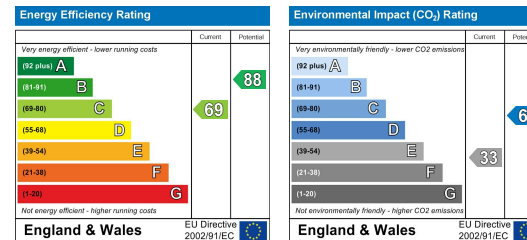
Please note our standard packages are available on almost all of our properties. Some individual properties may vary slightly. Any variations will be detailed during the application process.

## Key Property Features

- Superfast Broadband & Green Energy
- Recent Refurbishment
- Close to University
- Large Double Bedrooms
- Two Bathrooms
- Spacious Communal Areas
- Dining Area
- Close to Local Bars & Shops
- Secure Bike Storage
- Council Tax Band B



## Energy Efficiency Graph



## Hassle Free, Contactless Lettings

Ask us about our 360 degree virtual viewings and digital online tenancy applications.

0113 816 0131

Sugarhouse (Leeds) Ltd  
Registration Number 7594132 VAT Number 252251053  
Registered Office 47 Headingley Lane, Headingley, Leeds LS6  
Place of Registration England and Wales

www.sugarhouseproperties.co.uk /sugarhouseproperties @Sugarhouseleeds