

# HUNTERS®

HERE TO GET *you* THERE



## The Avenue, Leigh

Price £225,000

Council Tax: C

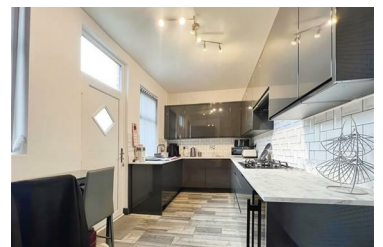
Tenure: Leasehold



POTENTIAL FOR OFF ROAD PARKING AT THE REAR - HUNTERS are delighted to market for sale a THREE BEDROOM semi detached Victorian home with original features, basement and garden to the rear. The property is conveniently situated for Leigh town centre, local schools and the V1 bus route direct to Manchester. In brief the property comprises of - entrance hall with stained glass door, lounge with bay window, separate dining room, modern kitchen diner and access to the basement currently used as the utility room. Upstairs there are three bedrooms, bathroom and stairs leading to the loft space with Velux windows. Externally there is an Astro turfed garden with decked patio.

Tenure - leasehold  
Council tax band - C

- THREE BEDROOMS
- VICTORIAN SEMI DETACHED
- ORIGINAL FEATURES
- BASEMENT



38 Lord Street, Leigh, WN7 1AB  
Tel: 01942 673 308 Email: [leigh@hunters.com](mailto:leigh@hunters.com)  
<https://www.hunters.com>