



5 Green Crescent, Flackwell Heath

£575,000



Robertsons

# 5 Green Crescent

Flackwell Heath, Buckinghamshire

An extended semi detached family home in this highly sought after location. Entrance porch, Entrance hall, Shower room, Sitting room, Family room, Kitchen, Three bedrooms, Family bathroom, Gas central heating, Double glazing, Garage and parking, Rear and side gardens. NO CHAIN. Council Tax band: E

Tenure: Freehold

## Entrance porch

Door to Entrance hall

## Entrance hall

Stairs to first floor, radiator, wall thermostat

## Shower room

Tiled shower cubicle housing Aqualisa shower unit, low level W.C., wash hand basin, heated towel rail, shaver point, electric Dimplex heater, tiled walls, window to rear

## Family room/Dining room

Radiator, fitted storage cupboard with fuses and meters, windows to front and rear

## Sitting room

Fireplace, recessed shelving, radiator, two wall light points, bay window to front, window to side

## Kitchen

With a range of eye and base level units incorporating sink unit with drainer, space for oven, space and plumbing for washing machine, space for fridge/freezer, under stairs storage cupboard, window to rear, door to garden





## **First floor**

### **Landing**

Access to loft space, window to rear

### **Bedroom 1**

With a range of fitted wardrobes, radiator, window to front

### **Bedroom 2**

Radiator, dimmer switch, window to rear

### **Bedroom 3**

Radiator, window to front

### **Bathroom**

Suite comprising panelled bath with mixer tap and shower attachment, wash hand basin with mixer tap, low level W.C., radiator, part tiled walls, airing cupboard housing foam clad hot water cylinder and shelved storage, wall mounted gas fired central heating boiler, window to rear

### **Front garden/Parking**

A driveway provides parking and the remainder is laid to lawn

### **Rear and side gardens**

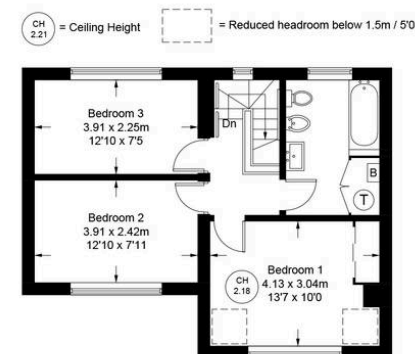
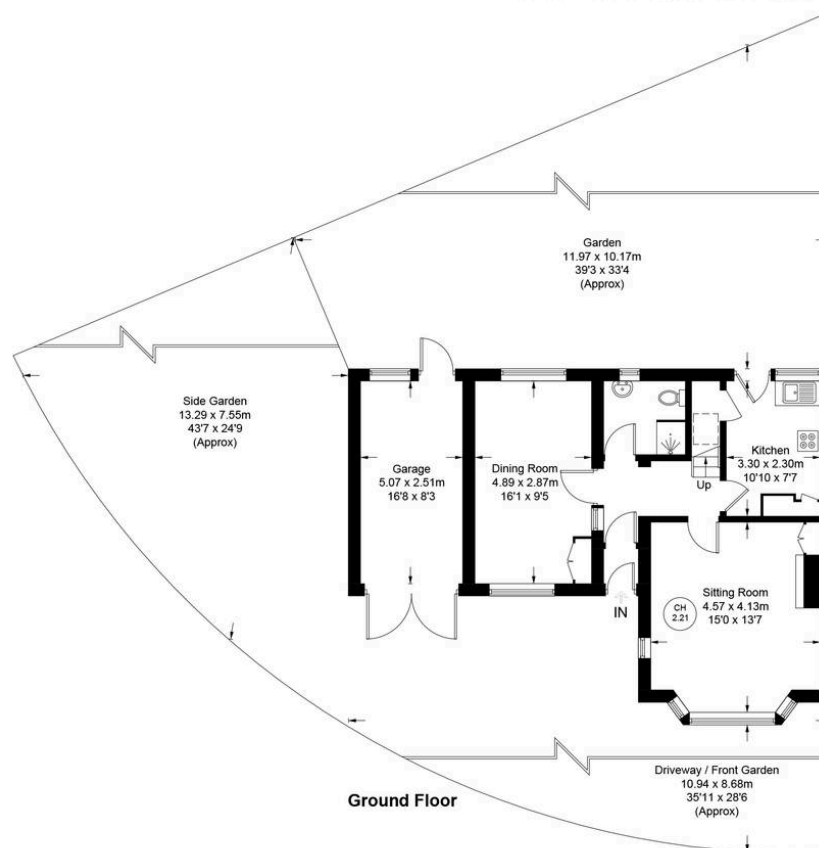
The gardens to the side and rear are laid to lawn with flower and shrub borders. All is enclosed by panelled fencing and mature hedging

### **Garage**

With double wooden doors, light and power, door to rear garden



Approximate Gross Internal Area  
 Ground Floor = 54.2 sq m / 583 sq ft  
 First Floor = 48.3 sq m / 520 sq ft  
 Garage = 12.8 sq m / 138 sq ft  
 Total = 115.3 sq m / 1241 sq ft



**First Floor**

Floor Plan produced for Robertsons by Media Arcade ©.

Illustration for identification purposes only. Window and door openings are approximate. Whilst every attempt is made to assure accuracy in the preparation of this plan, please check all dimensions, shapes and compass bearings before making any decisions reliant upon them.



**Robertsons**