



Flat 13, The Hollies Maxwell Road, Beaconsfield

£275,000



Robertsons



# Flat 13

The Hollies Maxwell Road, Beaconsfield

A spacious second floor apartment for the over 55's in this gated central Beaconsfield development. Entrance hall, Kitchen, Sitting room, Two double Bedrooms, Bathroom, Electric heating, Double glazing, Residents parking available, Communal gardens with a summerhouse for the residents use. There is an on site manager.

Council Tax band: E

Tenure: Leasehold







### **Entrance hall**

Electric radiator, security entry phone, airing cupboard housing hot water cylinder and cold water tank, cloaks cupboard

### **Sitting room**

Fireplace with electric fire, two electric radiators, two wall light points, two windows to front

### **Kitchen**

Fitted with a range of eye and base level units incorporating stainless steel sink unit with mixer tap and drainer, built in Bosch double oven, spacer for fridge/freezer, space and plumbing for washing machine, fitted four ring John Lewis hob with extractor over, part tiled walls, tiled flooring, window to front

### **Bedroom 1**

With a range of fitted wardrobes, electric radiator, window to rear

### **Bedroom 2**

With a range of fitted wardrobes, electric radiator, window to rear

### **Bathroom**

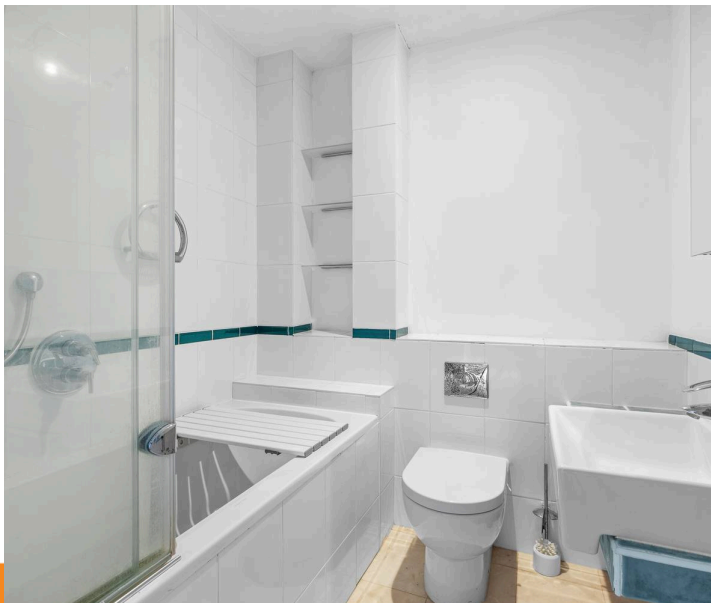
White suite comprising panelled bath with mixer tap and shower over, low level W.C., wash hand basin with mixer tap, heated towel rail, part tiled walls

### **Parking**

There are a number of residents parking spaces (not allocated)

### **Communal gardens**

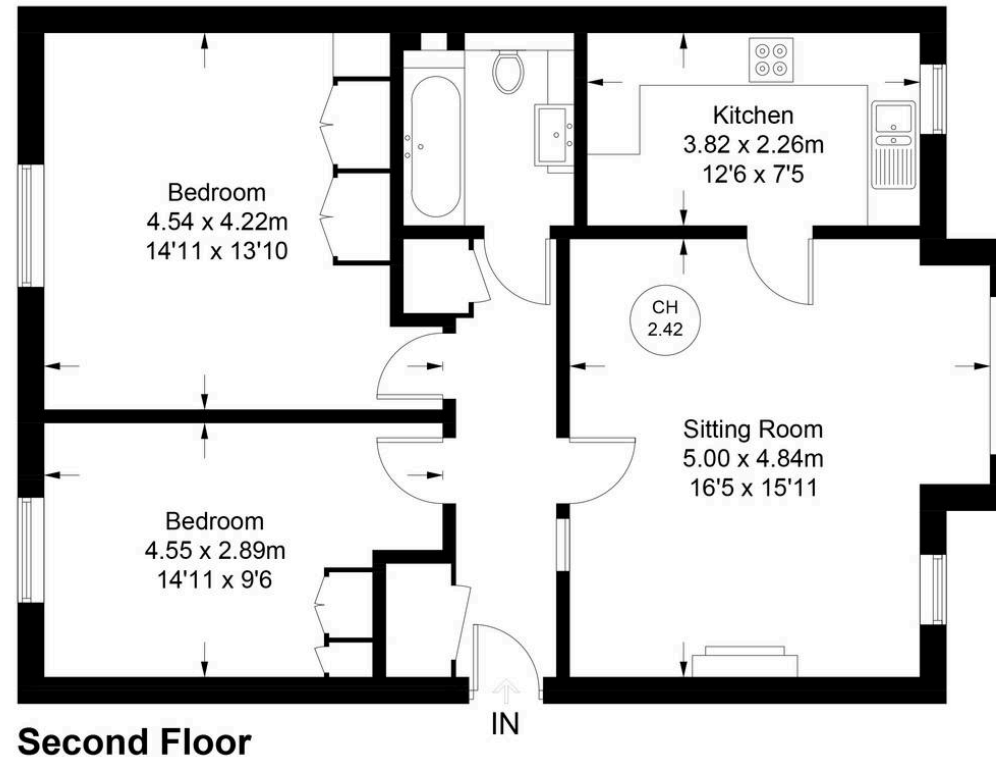
The communal gardens are well maintained, mainly laid to lawn with flower and shrub borders. There is a summerhouse for the residents to enjoy.





Approximate Gross Internal Area  
75.6 sq m / 814 sq ft

CH  
2.42 = Ceiling Height



**Second Floor**

Floor Plan produced for Robertsons by Media Arcade ©.  
Illustration for identification purposes only. Window and door openings are approximate. Whilst every attempt is made to assure accuracy in the preparation of this plan, please check all dimensions, shapes and compass bearings before making any decisions reliant upon them.

## Robertsons Estate Agents

Swains House, Swains Lane, Flackwell Heath – HP10 9BN

01628 533373

[flackwellheath@robertsonsestateagents.co.uk](mailto:flackwellheath@robertsonsestateagents.co.uk)

[www.robertsonsestateagents.co.uk/](http://www.robertsonsestateagents.co.uk/)



**Robertsons**