



89 The Rise, Loudwater
£450,000



89 The Rise

Loudwater, Buckinghamshire

An extended semi detached family home in this quiet no through road, offered for sale with no upward chain. Entrance Porch, Entrance hall, Sitting room, Dining room, Kitchen, Conservatory, Cloakroom, Three bedrooms, Bathroom, Gas central heating, Double glazing, Garage and parking, Garden.

Entrance porch

Part glazed door to Entrance hall

Entrance hall

Radiator, stairs to first floor with under stairs storage cupboard

Sitting room

Fireplace with fitted gas fire, radiator, window to front, opening to Dining room

Dining room

Radiator

Kitchen

Fitted with a range of eye and base level units incorporating stainless steel sink unit with mixer tap and drainer, built in oven, fitted four ring gas hob with extractor over, space for fridge/freezer, concealed wall mounted Worcester gas fired central heating boiler, window to side, door to Conservatory

Conservatory

Radiator, space and plumbing for washing machine, wall light point, door to garden





Cloakroom

Low level W.C., wash hand basin with tiled splash back, window to side

First floor

Landing

Window to side

Bedroom 1

Access to loft space, airing cupboard housing foam clad hot water cylinder and shelved storage, window to front

Bedroom 2

With a range of built in wardrobes, radiator, window to rear

Bedroom 3

Radiator, built in wardrobe, window to front

Bathroom

White suite comprising panelled bath with mixer tap and shower attachment and further Aqualisa shower over, low level W.C., wash hand basin, radiator, part tiled walls, electric heater, window to rear

Front garden/Parking

A driveway provides parking for two cars

Garage

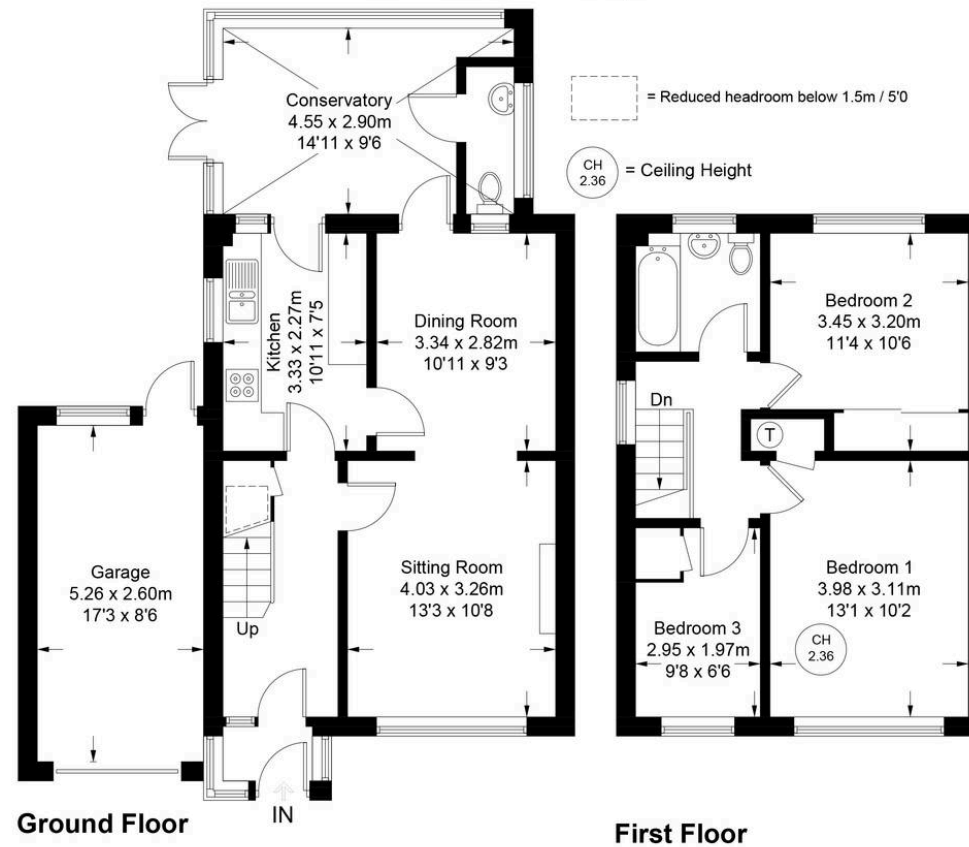
With electric up and over door, light and power, door to garden, window to rear

Rear garden

The rear garden is principally laid to lawn with various beds and borders. All is enclosed by panelled fencing and brick walling and extends to 37' x 24'.



Approximate Gross Internal Area
 Ground Floor = 55.5 sq m / 597 sq ft
 First Floor = 39.3 sq m / 423 sq ft
 Garage = 13.8 sq m / 148 sq ft
 Total = 108.6 sq m / 1168 sq ft



Floor Plan produced for Robertsons by Media Arcade ©.
 Illustration for identification purposes only. Window and door openings are approximate. Whilst every attempt is made to assure accuracy in the preparation of this plan, please check all dimensions, shapes and compass bearings before making any decisions reliant upon them.