



15 Magpie Close, Flackwell Heath
£795,000

15 Magpie Close

Flackwell Heath, High Wycombe

An attractive and spacious detached family home situated in this quiet cul-de-sac location. Entrance hall, Cloakroom, Sitting room, Dining room, Conservatory, Study, Refitted Kitchen, Bedroom 1 with refitted en suite shower room, Three further bedrooms, Refitted Family bathroom, Gas central heating, Double glazing, Double garage and parking, Gardens.

Council Tax band: TBD

Tenure: Freehold





Entrance hall

Radiator, stairs to first floor, built in cloaks cupboard

Cloakroom

Low level W.C., wash hand basin with tiled splash back, window to front

Sitting room

Open fireplace with marble effect surround and hearth, radiator, Tv point, three wall light points, telephone point, window to front, double doors to Dining room

Dining room

Radiator, sliding door to garden

Conservatory

Doors to garden

Study

Radiator, window to rear

Kitchen

Refitted with a range of eye and base level units incorporating sink unit with mixer tap and drainer, built in oven, fitted four ring hob with extractor over, space for fridge/freezer, space and plumbing for washing machine, radiator, part tiled walls, window to rear, sliding patio doors to garden

First floor

Landing

Access to loft space, airing cupboard housing foam clad hot water cylinder fitted with immersion and shelved storage, built in storage cupboard, window to front

Bedroom 1

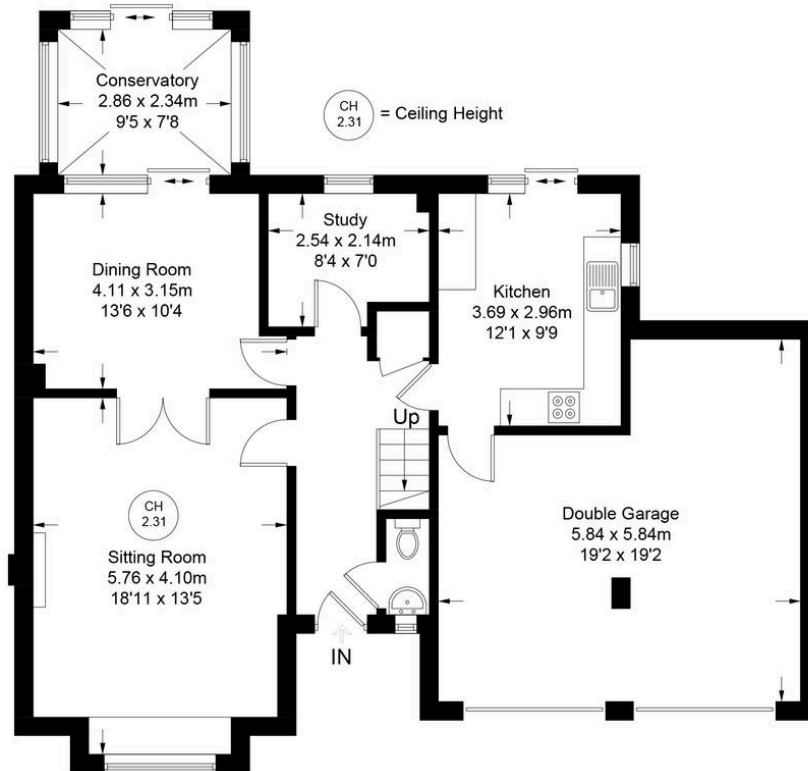
With built in wardrobes, radiator, window to front

En suite shower room

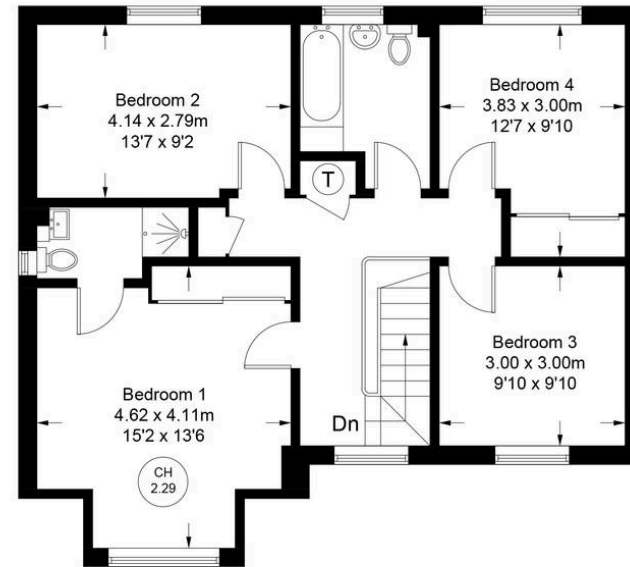
Refitted suite comprising shower cubicle with fitted shower unit, low level W.C., wash hand basin, part tiled walls, radiator, window to side



Approximate Gross Internal Area
 Ground Floor = 101.9 sq m / 1097 sq ft (Including Double Garage)
 First Floor = 69.6 sq m / 749 sq ft
 Total = 171.5 sq m / 1846 sq ft



Ground Floor



First Floor

Floor Plan produced for Robertsons by Media Arcade ©.
 Illustration for identification purposes only. Window and door openings are approximate. Whilst every attempt is made to assure accuracy in the preparation of this plan, please check all dimensions, shapes and compass bearings before making any decisions reliant upon them.

Robertsons Estate Agents

Swains House, Swains Lane, Flackwell Heath – HP10 9BN

01628 533373

flackwellheath@robertsonsestateagents.co.uk

www.robertsonsestateagents.co.uk/



Robertsons