



Tyrone, Kingsmead Road, Loudwater

Guide Price £475,000



Tyrone, Kingsmead Road

Loudwater, Buckinghamshire

A detached bungalow set back from the road on a large plot. The property is in need of modernisation, offers scope to extend (subject to the usual permissions) and is offered for sale with no upward chain. Entrance hall, Sitting room, Kitchen, Two bedrooms, bathroom, Separate W.C., Gas central heating, Double glazing, Garage and ample parking, Large gardens.

Council Tax band: E

Tenure: Freehold

Entrance hall

Radiator, airing cupboard housing foam clad hot water cylinder and shelved storage, built in storage cupboard

Sitting room

Two radiators, picture rail, window to side

Kitchen

Fitted with a range of eye and base level units incorporating stainless steel sink unit with mixer tap and drainer, space for oven, space for fridge/freezer, space and plumbing for washing machine, space and plumbing for dishwasher, space for appliances, wall mounted Ideal gas fired central heating boiler, built in shelved storage cupboard, radiator, part tiled walls, door to side, window to rear

Bedroom 1

Radiator, bay window to front and window to side





Bedroom 2

Radiator, access to loft space, window to rear

Bathroom

Suite comprising panelled bath with mixer tap and shower over, wash hand basin with mixer tap and cupboards under, radiator, tiled walls, window to rear

Separate W.C.

Low level W.C., part tiled walls, window to rear

Front garden/Parking

A driveway offers ample parking. The remainder is laid to lawn

Rear garden

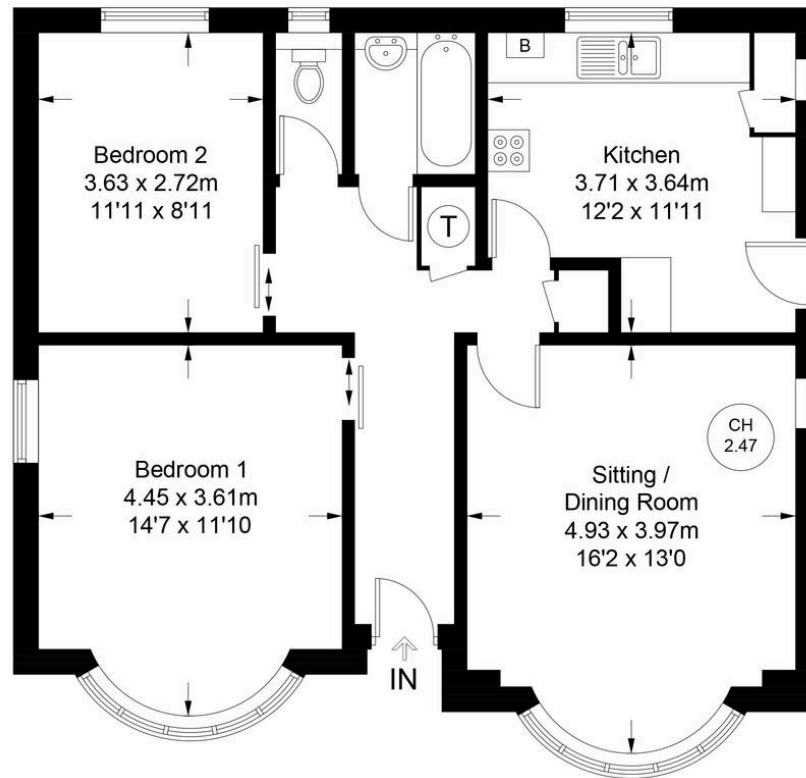
Mainly laid to lawn with shrub borders. All is enclosed by fencing. The garden extends to 96' x 46'.

Garage

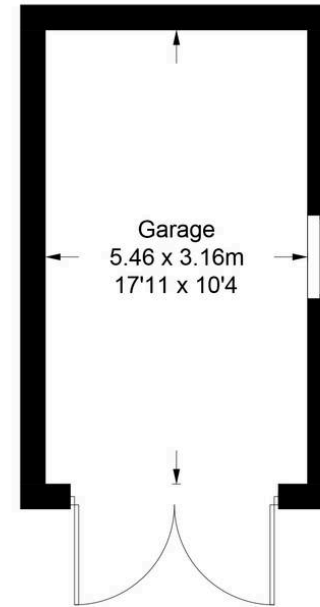
With double wooden doors



Approximate Gross Internal Area = 71.7 sq m / 772 sq ft
Garage = 17.5 sq m / 188 sq ft
Total = 89.2 sq m / 960 sq ft



CH 2.56 = Ceiling Height



(Not Shown In Actual Location / Orientation)

Ground Floor

Floor Plan produced for Robertsons by Media Arcade ©.
Illustration for identification purposes only. Window and door openings are approximate. Whilst every attempt is made to assure accuracy in the preparation of this plan, please check all dimensions, shapes and compass bearings before making any decisions reliant upon them.



Robertsons