



7 Cherrywood Gardens, Flackwell Heath

Guide Price £675,000



Robertsons

7 Cherrywood Gardens

Flackwell Heath, Buckinghamshire

A detached family home in need of modernisation in this highly sought after cul-de-sac. Entrance hall, Bathroom, Sitting/Dining room, Kitchen, Three bedrooms, Box room, Separate W.C., Gas central heating, Double glazing, Garage and parking, Large garden (112' maximum narrowing to 62'). Ample scope to extend (subject to the usual permissions).

Council Tax band: F

Tenure: Freehold

Entrance hall

Radiator

Bathroom

Suite comprising panelled bath with mixer tap and shower attachment, low level W.C., wash hand basin, radiator, part tiled walls, airing cupboard housing foam clad hot water cylinder and shelved storage

Sitting/Dining room

Fireplace with fitted gas fire (not tested), two radiators, stairs to first floor, sliding patio doors to garden

Kitchen

Fitted with a range of eye and base level units incorporating stainless steel sink unit with mixer tap and drainer, space for fridge/freezer, space and plumbing for washing machine, space and plumbing for dishwasher, wall mounted Worcester gas fired central heating boiler, radiator, under stairs storage cupboard, part tiled walls, window to rear, door to side





First floor

Landing

Access to loft space, window to rear

Bedroom 1

Radiator, door to balcony, window to front

Bedroom 2

Radiator, window to rear

Bedroom 3

With a range of fitted cupboards and drawers, radiator, window to front

Box room

Radiator, window to rear

Separate W.C.

Low level W.C., window to side

Front garden/Parking

A driveway provides parking for several cars. The remainder is laid to lawn.

Garage

With double wooden doors


Rear garden


Principally laid to lawn and enclosed by panelled fencing. The garden enjoys a sunny south westerly aspect and extends to 112' (maximum, narrowing to 62').

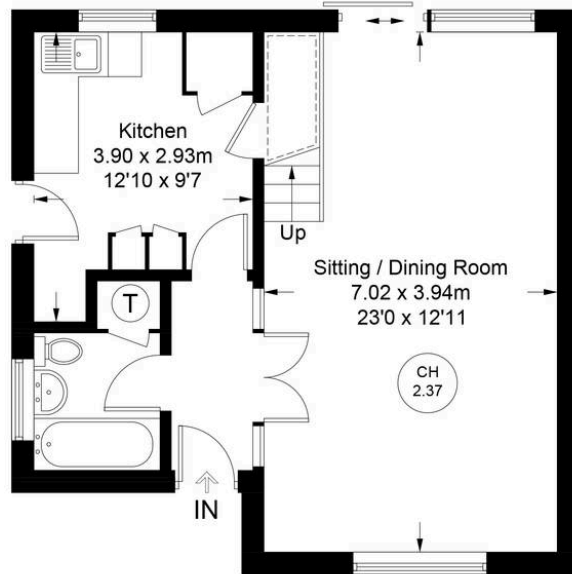


Approximate Gross Internal Area
 Ground Floor = 46.4 sq m / 499 sq ft
 First Floor = 46.1 sq m / 496 sq ft
 Garage = 13.9 sq m / 150 sq ft
 Total = 106.4 sq m / 1145 sq ft

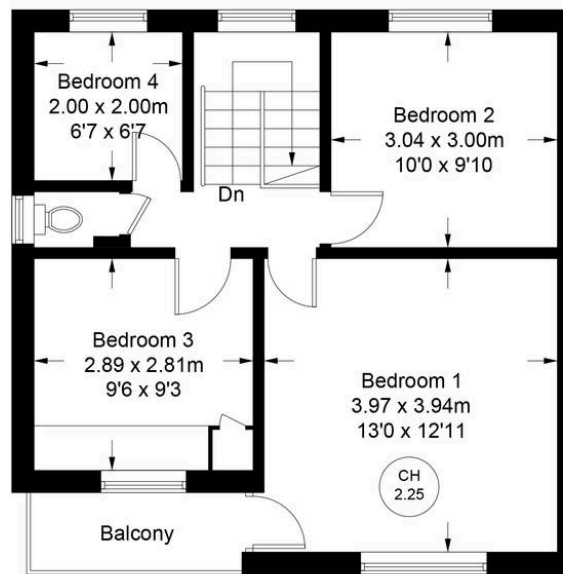


 = Reduced headroom below 1.5m / 5'0"

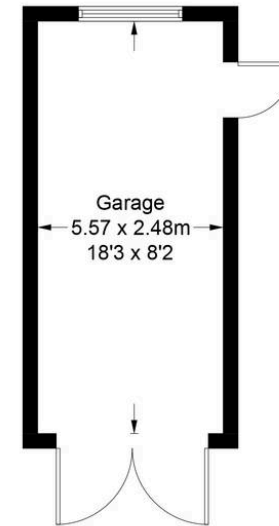
 = Ceiling Height



Ground Floor



First Floor



(Not Shown In Actual
Location / Orientation)

Floor Plan produced for Robertsons by Media Arcade ©.
 Illustration for identification purposes only. Window and door openings are approximate. Whilst every attempt is made to assure accuracy in the preparation of this plan, please check all dimensions, shapes and compass bearings before making any decisions reliant upon them.



Robertsons