



10 Bay Tree Close, Loudwater

£525,000



10 Bay Tree Close

High Wycombe, High Wycombe

An very well presented and extended semi detached family home situated towards the end of this popular cul-de-sac. Entrance hall, Bedroom 4/Study, Sitting/Dining room, Conservatory, Kitchen, Utility room, Cloakroom, Three first floor bedrooms, Shower room, Gas central heating, Double glazing, Off road parking for four cars, Garden.

Entrance hall

Radiator, window to side, door to Sitting room

Bedroom 4/Study

Radiator, down lighters, window to front

Sitting/Dining room

Attractive working fireplace, two radiators, stairs to first floor, wall thermostat, down lighters, sliding doors to Conservatory

Conservatory

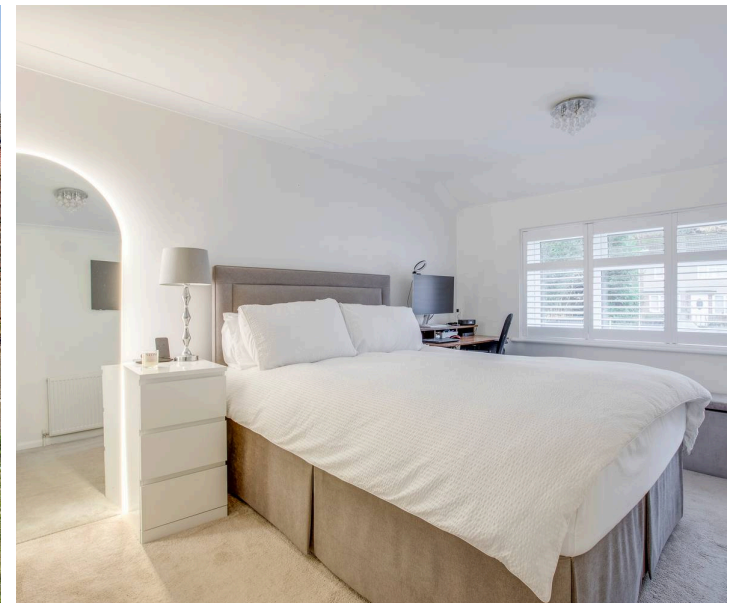
With doors to garden, two radiators

Kitchen

Fitted with a range of eye and base level units incorporating sink unit with mixer tap and drainer, built in Zanussi double oven, fitted four ring gas hob with extractor over, space for American style fridge/freezer, built in Electrolux dishwasher, part tiled walls, down lighters, window to rear

Utility room

Space and plumbing for washing machine, space for appliance, radiator, range of fitted storage cupboards, down lighters, door to side, door to Cloakroom





Cloakroom

Radiator, low level W.C., wash hand basin with mixer tap and tiled splash back, down lighters, window to side

First floor

Landing

Access to part boarded loft space with lighting and integrated loft ladder, built in storage cupboard with wall mounted Vaillant gas fired central heating boiler

Bedroom 1

Radiator, window to front, fitted shutters

Bedroom 2

With a range of fitted wardrobes, radiator, window to rear

Bedroom 3

Radiator, window to front, fitted shutters

Shower room

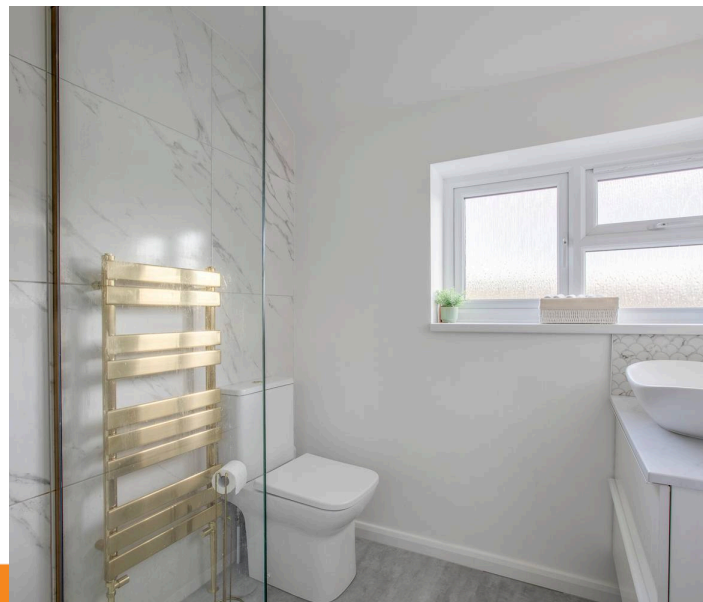
Refitted suite comprising shower cubicle housing rainfall shower unit, low level W.C., wash hand basin with mixer tap and cupboards under, heated towel rail, down lighters, part tiled walls, shelved storage cupboard, shaver point, fitted circular mirror, window to rear

Front garden/Parking

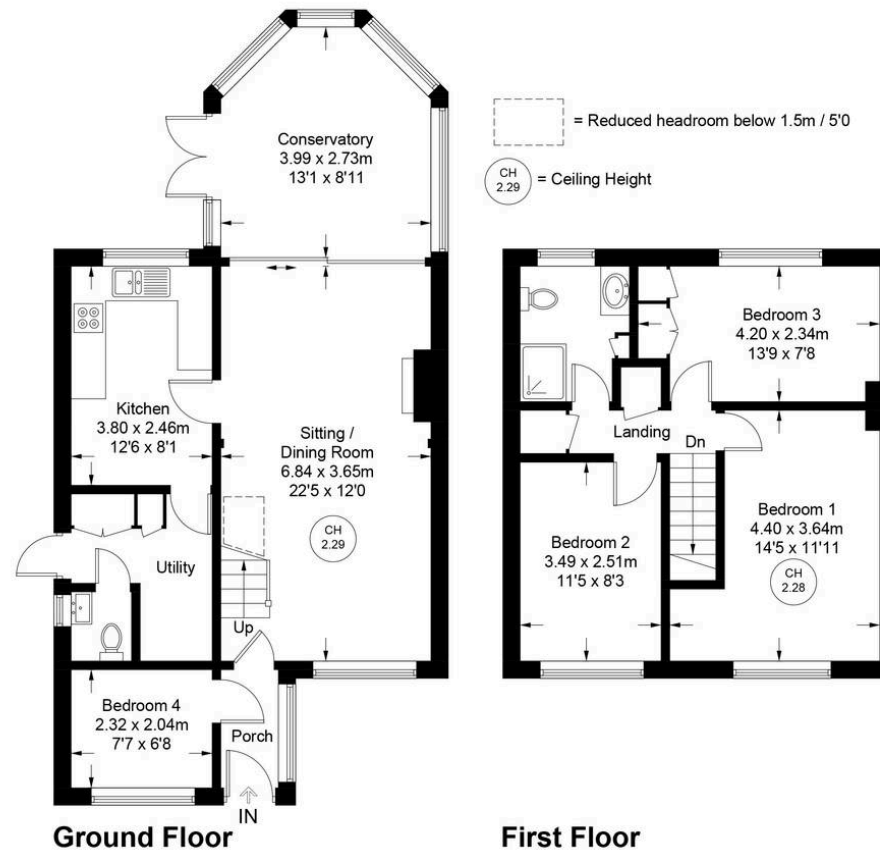
A block paved driveway provides parking for four cars. There is a PodPoint EV Charger. The remainder is laid to lawn.

Rear garden

An area of decking leads to the remainder of garden which is laid to lawn with flower and shrub borders. All is enclosed by panelled fencing and extends to 58' x 23'. There is 12x6ft shed with light and power. There is rear gated access to Kingsmead Road.



Approximate Gross Internal Area
 Ground Floor = 64.8 sq m / 697 sq ft
 First Floor = 42.8 sq m / 461 sq ft
 Total = 107.6 sq m / 1158 sq ft



Floor Plan produced for Robertsons by Media Arcade ©.
 Illustration for identification purposes only. Window and door openings are approximate. Whilst every attempt is made to assure accuracy in the preparation of this plan, please check all dimensions, shapes and compass bearings before making any decisions reliant upon them.



Robertsons