



10 Wycombe View, Flackwell Heath

£250,000



Robertsons

10 Wycombe View

Flackwell Heath, High Wycombe

A spacious and very well presented top floor apartment in this popular village location close to lovely woodland walks. Entrance hall, Sitting/Dining room, Kitchen, Two bedrooms, Bathroom, Electric heating (recently installed and eco efficient), Double glazing, Communal gardens, Ample parking.

Council Tax band: B

Tenure: Leasehold





Entrance hall

Walk in storage cupboard

Sitting/Dining room

Electric radiator, window to side

Kitchen

Fitted with a range of eye and base level units incorporating stainless steel sink unit with mixer tap and drainer, built in oven, fitted four ring hob with extractor over, space for fridge/freezer, space and plumbing for washing machine, window to side

Bedroom 1

Electric radiator, door to balcony, window to rear

Bedroom 2

Electric radiator, door to balcony, built in double wardrobe, windows to rear and side

Bathroom

White suite comprising panelled bath with rainfall shower over, low levelm W.C., wash hand basin with mixer tap, fitted storage cupboard, tiled walls, tiled flooring, two windows to side

Communal gardens

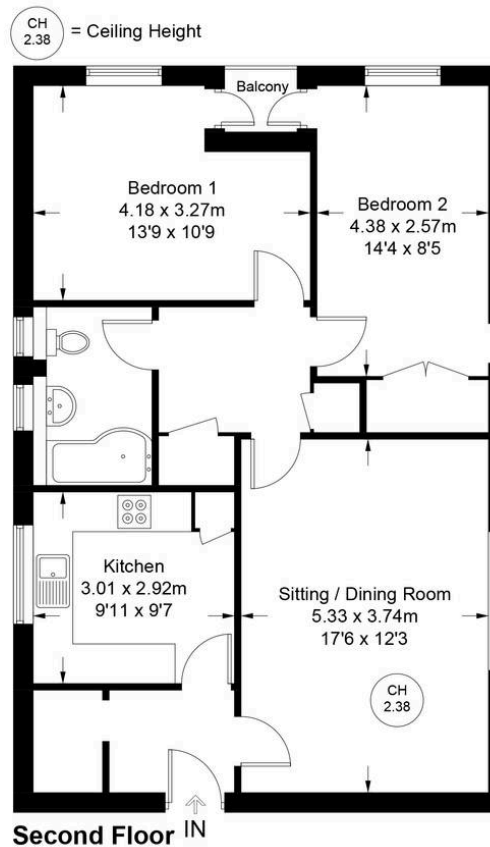
Mainly laid to lawn with a drying area

Parking

There is ample residents and visitors parking



Approximate Gross Internal Area = 72.5 sq m / 780 sq ft



Floor Plan produced for Robertsons by Media Arcade ©.
Illustration for identification purposes only. Window and door openings are approximate. Whilst every attempt is made to assure accuracy in the preparation of this plan, please check all dimensions, shapes and compass bearings before making any decisions reliant upon them.

Robertsons Estate Agents

Swains House, Swains Lane, Flackwell Heath – HP10 9BN

01628 533373

flackwellheath@robertsonsestateagents.co.uk

www.robertsonsestateagents.co.uk/

