



Flat 4, Juniper Court Juniper Lane, Flackwell Heath  
£350,000



# Flat 4

Juniper Court Juniper Lane, High Wycombe

A well appointed ground floor apartment in this highly sought after gated development built in 2004 by Try Homes. Entrance hall, Sitting room with doors to patio area, Kitchen, Bedroom 1 with en suite Bathroom, Second bedroom, Shower room, Gas central heating, Double glazing, Two parking spaces (one under cover), Communal gardens.

## Entrance hall

Radiator, security entry phone, airing cupboard housing Mega Flo hot water cylinder and shelved storage, wall thermostat, built in storage cupboard

## Sitting room

With double doors to patio area, two radiators, TV point, telephone point, two wall light points

## Kitchen

Fitted with a range of eye and base level units incorporating stainless steel sink with mixer tap and drainer, built in Electrolux double oven, fitted four ring Electrolux gas hob with extractor over, built in fridge/freezer, built in Bosch dishwasher, built in Hotpoint washer/dryer, part tiled walls, down lighters, radiator, tiled flooring, window to front

## Bedroom 1

With built in double wardrobe, radiator, window to rear





### **En suite Bathroom**

White suite comprising panelled bath with mixer tap and shower attachment, low level W.C., wash hand basin, part tiled walls, shaver point, heated towel rail, down lighters

### **Bedroom 2**

Radiator, window to rear

### **Shower room**

Shower cubicle housing fitted shower unit, low level W.C., wash hand basin, part tiled walls, shaver point, heated towel rail, down lighters

### **Parking**

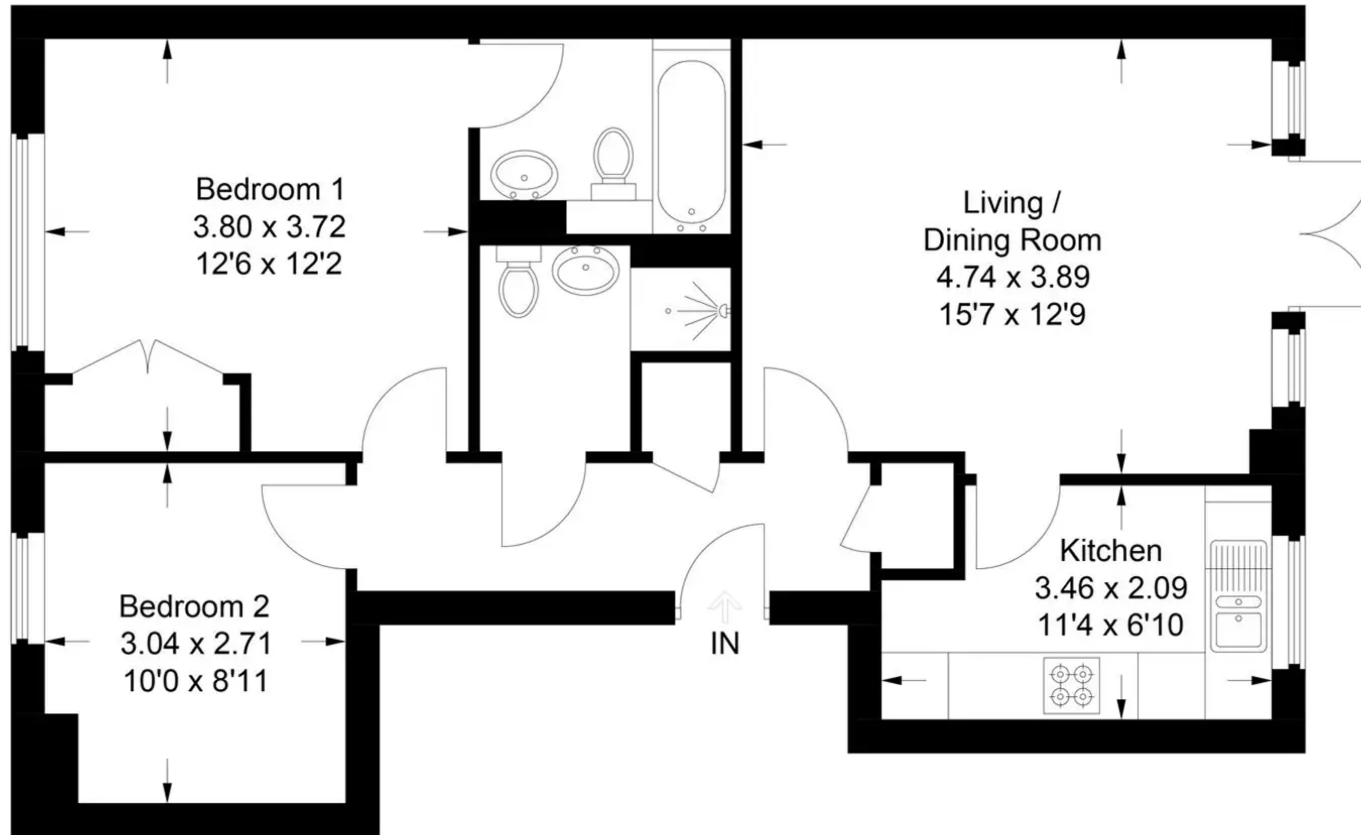
There are two allocated parking spaces for the property. One of them is undercover.

### **Communal gardens**



## 4 Juniper Court

Approximate Gross Internal Area  
63.9 sq m / 688 sq ft



This plan is for layout guidance only. Not drawn to scale unless stated. Windows and door openings are approximate. Whilst every care is taken in the preparation of this plan, please check all dimensions, shapes and compass bearings before making any decisions reliant upon them.

© CJ Property Marketing Ltd Produced for Robertsons



**Robertsons**