



7 The Greenway, Penn  
£600,000





## 7 The Greenway

Penn, High Wycombe

An extended semi detached family home with in a short walk of local shops and in the catchment for Tylers Green First and Middle schools. Entrance hall, Sitting/Dining room, Kitchen, Conservatory/Family room, Three bedrooms, Bathroom, Gas central heating, Double glazing, Double length garage and parking, Gardens. There is potential to extend further subject to the usual permissions.

Tenure: Freehold

### Entrance hall

Radiator, stairs to first floor with understairs storage cupboard, wooden flooring

### Sitting/Dining room

Two radiators, window to front

### Kitchen

Fitted with a range of eye and base level units incorporating sink unit with mixer tap and drainer, built in Neff double oven, fitted four ring gas hob with extractor over, space and plumbing for dishwasher, space and plumbing for washing machine, tiled walls, tiled flooring, door to Conservatory

### Conservatory/Family room

Radiator, space for fridge/freezer, tiled flooring, sliding patio doors to garden







## First floor

### Landing

Access to loft space, window to side

### Bedroom 1

Radiator, built in shelved storage, dimmer switch, window to rear

### Bedroom 2

Radiator, dimmer switch, window to front

### Bedroom 3

Radiator, built in shelved storage cupboard, dimmer switch, window to front

### Bathroom

White suite comprising panelled bath with mixer tap and rainfall shower over, low level W.C., wash hand basin with mixer tap and cupboard under, heated towel rail, part tiled walls, window to rear

### Front garden/Parking

A driveway provides parking for two cars. The remainder is laid to lawn

### Double length garage

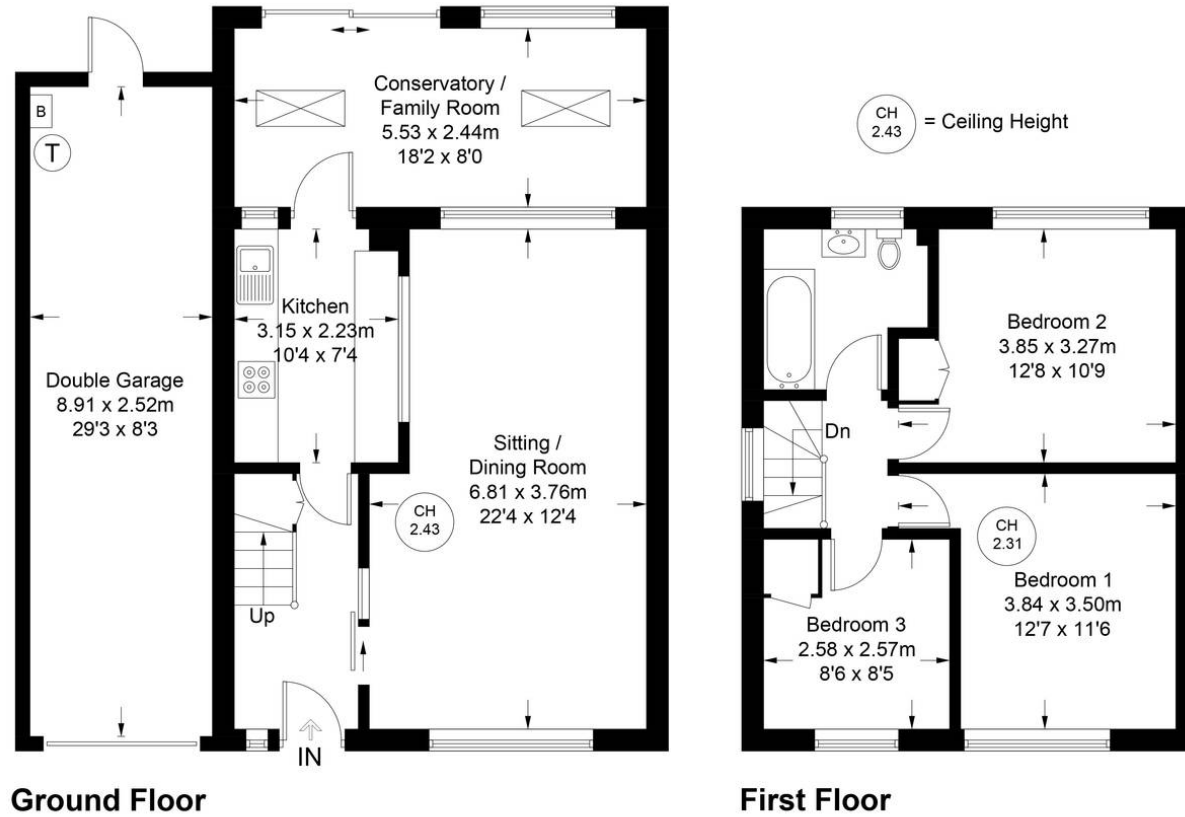
With electric up and over door, fuses and meters, light and power, wall mounted Vaillant gas fired central heating boiler, hot water cylinder

### Garden

An area of patio leads to the remainder of garden which is laid to lawn and enclosed by panelled fencing. The garden extends to 60'.



Approximate Gross Internal Area  
 Ground Floor = 54.7 sq m / 589 sq ft  
 First Floor = 38.7 sq m / 416 sq ft  
 Double Garage = 22.2 sq m / 239 sq ft  
 Total = 115.6 sq m / 1244 sq ft



Floor Plan produced for Robertsons by Media Arcade ©.  
 Illustration for identification purposes only. Window and door openings are approximate. Whilst every attempt is made to assure accuracy in the preparation of this plan, please check all dimensions, shapes and compass bearings before making any decisions reliant upon them.



**Robertsons**