



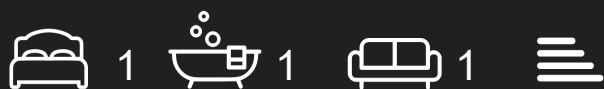
## Defoe House, Barbican, London, EC2Y 8ND

Asking Price £715,000

- Superb Garden Views
- One large Double Bedroom
- Brooke Marine Kitchen
- South Facing
- Good size Reception Room
- Grade II Listed
- Flooded with Light
- All Original Condition
- Original Bathroom

# Defoe House, Barbican, London, EC2Y 8ND

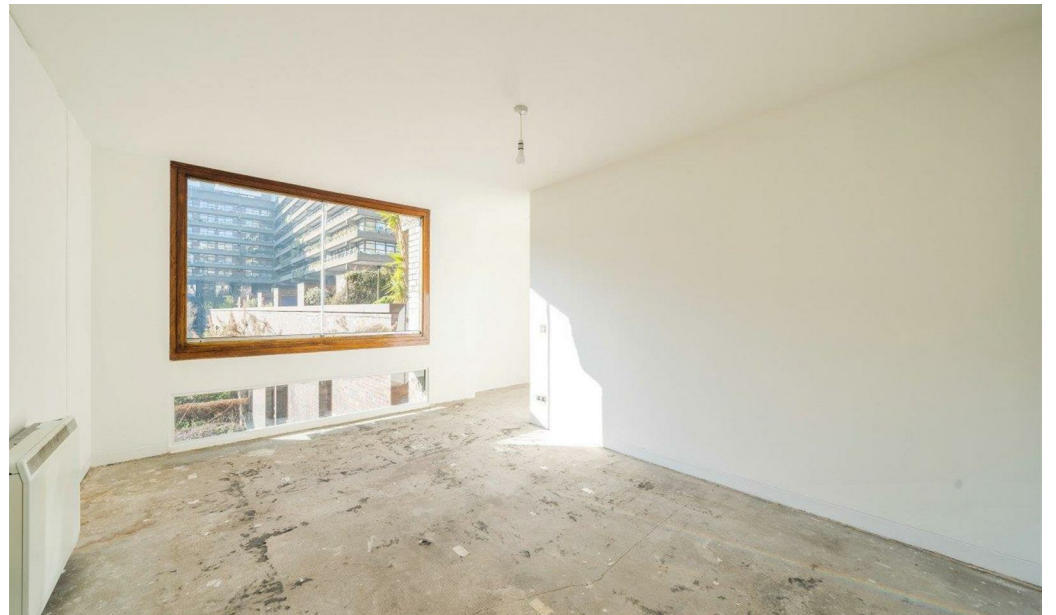
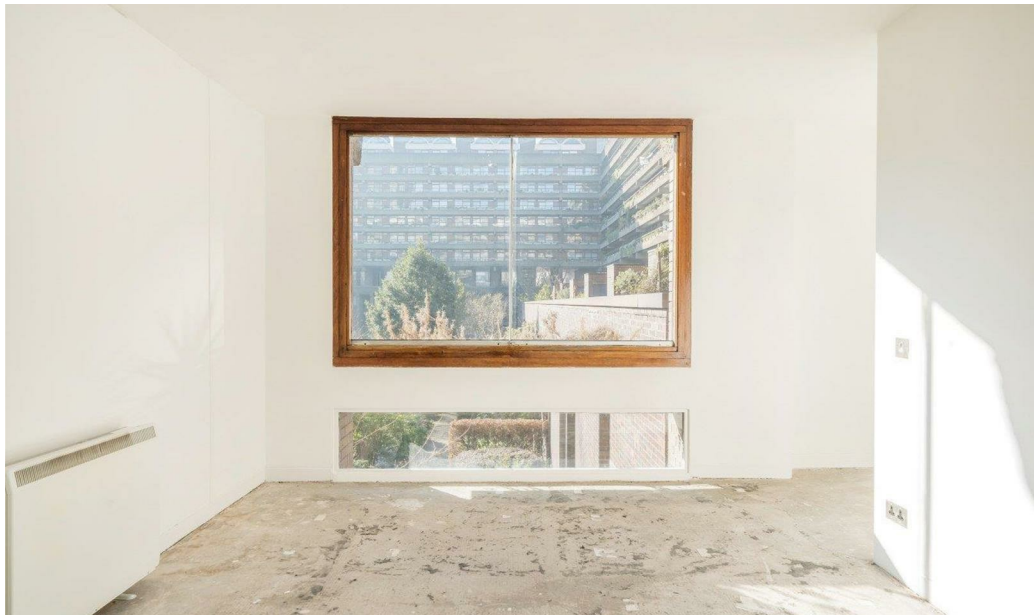
Superb garden views for this one bed roomed 01 level garden apartment, bright and flooded with sunshine with a South Facing aspect, being sold direct from the City of London, retaining all its original 1960's Grade II Listed features including the Brooke Marine kitchen and original bathroom.



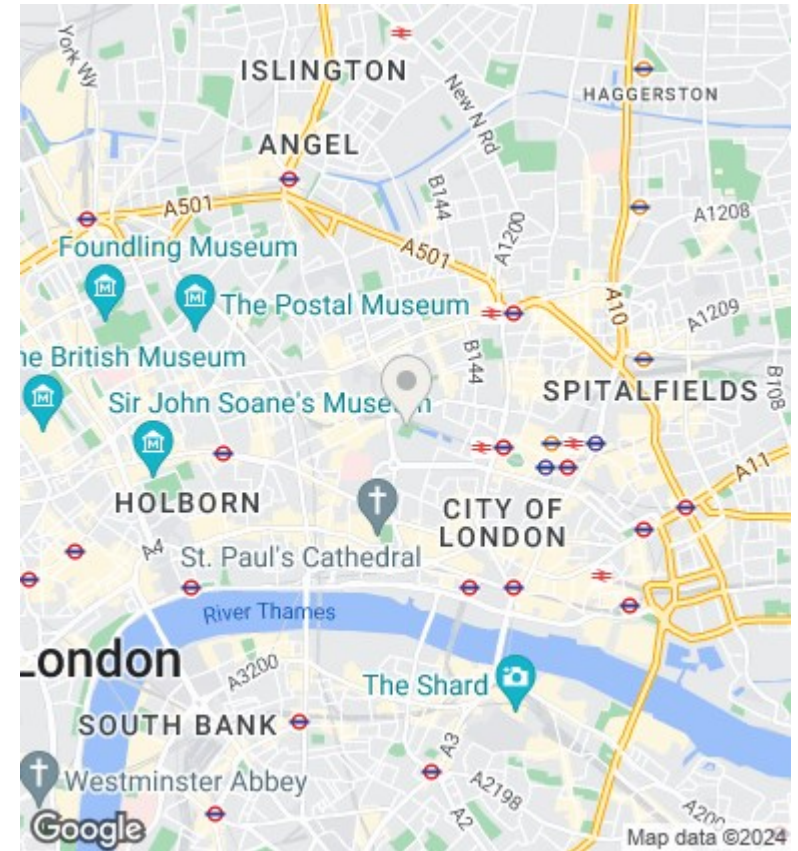
Council Tax Band:





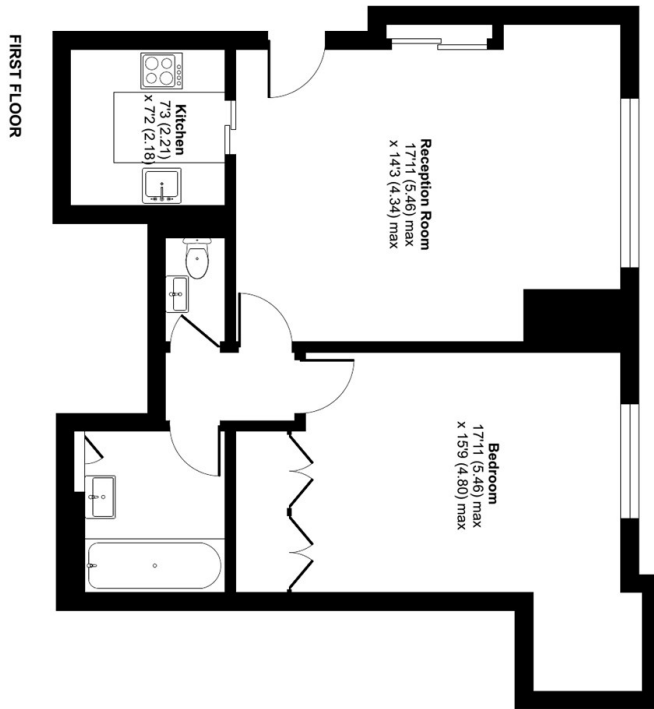






## Defoe House, Barbican, London, EC2Y

Approximate Area = 634 sq ft / 58 sq m  
For identification only - Not to scale



Floor plan produced in accordance with RICS Property Measurement Standards incorporating PAS 98:2018. Produced for Hamilton Brooks. REF: 946592

## Directions

## Viewings

Viewings by arrangement only. Call 020 7606 8000 to make an appointment.

## Council Tax Band

Energy Efficiency Rating		
	Current	Potential
<i>Very energy efficient - lower running costs</i>		
(92 plus) <b>A</b>		
(81-91) <b>B</b>		
(69-80) <b>C</b>		
(55-68) <b>D</b>		
(39-54) <b>E</b>		
(21-38) <b>F</b>		
(1-20) <b>G</b>		
<i>Not energy efficient - higher running costs</i>		
<b>England &amp; Wales</b>	EU Directive 2002/91/EC	