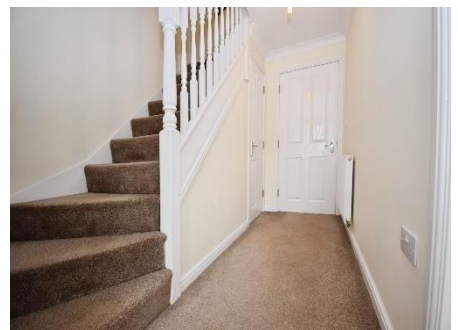




Violet Croft, Bebington

£1,300 PCM



LESLEY HOOKS
ESTATE AGENTS





Welcome to this beautifully presented modern townhouse, thoughtfully arranged over three spacious floors and offering immaculate, move-in ready accommodation. With uPVC double glazing and gas central heating throughout, this home combines comfort, style, and practicality in equal measure. Step inside to a welcoming hallway that leads to a convenient downstairs WC, a bright and airy lounge featuring double doors that open out onto the rear garden, and a smartly designed kitchen-diner. The kitchen is fully fitted with contemporary units and comes complete with a five-ring gas hob, double oven, and integrated dishwasher — perfect for modern family living and entertaining. On the first floor, you'll find three generously sized bedrooms and a sleek, three-piece family bathroom with a mixer shower and screen over the bath. The top floor is dedicated to a superb master suite, boasting an en-suite shower room and a fantastic walk-in wardrobe, offering both privacy and luxury. Outside, the property features a driveway providing off-road parking to the front, while the rear garden is a real highlight — a lovely, low-maintenance space with a patio area and a sunny southerly aspect, ideal for relaxing or dining al fresco. Situated in a popular and convenient location, you're just a short stroll from highly regarded primary, secondary, and grammar schools, as well as a great selection of local shops and amenities. This is a fantastic opportunity to secure a stylish, spacious home in a sought-after area — early viewing is highly recommended! Council tax band D.



Hallway

17'10" (5.44m) x 3'3" (0.99m)

Downstairs WC

6'10" (2.08m) x 2'11" (0.89m)

Lounge

16'1" (4.9m) x 10'5" (3.18m)

Kitchen Dining Room

16'9" (5.11m) x 8'10" (2.69m)

Bedroom Two

14'1" (4.29m) x 8'11" (2.72m)

Bedroom Three

13'5" (4.09m) x 8'11" (2.72m)

Bedroom Four

9'11" (3.02m) x 6'11" (2.11m)

Bathroom

7'1" (2.16m) x 6'10" (2.08m)

Master Bedroom

19'2" (5.84m) Max x 12'8" (3.86m) Max

En-Suite Shower Room

7'1" (2.16m) x 6'10" (2.08m)

Walk in Wardrobe

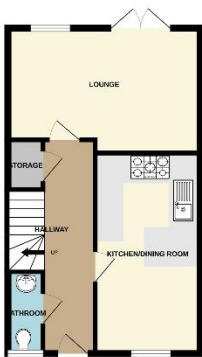
6'9" (2.06m) x 6'1" (1.85m)







GROUND FLOOR
438 sq.ft. (40.7 sq.m.) approx.



1ST FLOOR
458 sq.ft. (42.3 sq.m.) approx.



2ND FLOOR
398 sq.ft. (36.7 sq.m.) approx.



TOTAL FLOOR AREA: 1294 sq.ft. (120.1 sq.m.) approx.

While every attempt has been made to ensure the accuracy of the floorplan contained here, measurements of rooms, windows, doors and any other items are approximate and no responsibility is taken for any error, omission or misstatement. This plan is for illustrative purposes only and should be used as such by any prospective purchaser. The services, systems and appliances shown have not been tested and no guarantee as to their operability or efficiency can be given.
Made with Floorplan 2002.

Contact Us:

0151 644 6000

lesley@lesleyhooks.co.uk

6 Church Road, Bebington,

Wirral, Merseyside, CH63 7PH

Disclaimer: Whilst these details are thought to be correct, their accuracy cannot be guaranteed and do not form part of any contract. It should be noted that we have not tested any fixtures, fittings, equipment, apparatus or services, therefore we cannot verify that they are in working order of fit for purpose. Solicitors should be used to confirm that any moveable items described within these details are in fact part of the sale agreement. While we try to ensure measurements are correct they are not guaranteed and purchasers are advised to take their own measurements before ordering any fixtures and fittings. Please note: if you are buying a leasehold property, please ensure that all details and conditions of the lease are checked with your solicitor prior to you incurring any costs as additional fees could be incurred for items such as leasehold packs.