



Martlesham Crescent, Greasby

£290,000



LESLEY HOOKS
ESTATE AGENTS





360 VIRTUAL TOUR Welcome to this delightful semi-detached house, a perfect haven of light and airy spaces, offering immaculate accommodation that's ready for you to move into. Featuring uPVC double glazing and efficient combi-fired gas central heating, this home is designed for modern comfort and convenience. Step inside to a welcoming hallway that guides you to a cosy sitting room, perfect for relaxing after a long day. The spacious lounge dining room is ideal for both entertaining and everyday family life, with open access to a smartly fitted kitchen that will inspire your culinary adventures. Upstairs, you'll find three generously sized bedrooms, providing ample space for family, guests, or a home office. The stylish bathroom boasts a contemporary three-piece suite, adding a touch of elegance. Additionally, there is a generous walk-in storage cupboard, ensuring you have plenty of space to keep your home organised and clutter-free. Outside, the property features a convenient driveway with off-road parking at the front. The rear garden is truly a highlight, offering a divine oasis with a lovely patio area, perfect for enjoying sunny days and outdoor dining. This house is a wonderful blend of comfort, style, and functionality, waiting for you to call it home! Council tax band B. Freehold.



Hallway

11'4" (3.45m) Max x 6'4" (1.93m)

Sitting Room

15'7" (4.75m) x 11'0" (3.35m)

Lounge Dining Room

19'10" (6.05m) x 10'8" (3.25m)

Kitchen

21'9" (6.63m) x 8'3" (2.51m)



Bedroom One

19'10" (6.05m) x 10'8" (3.25m)

Bedroom Two

12'1" (3.68m) Into Bay x 8'5" (2.57m)

Bedroom Three

15'1" (4.6m) x 7'0" (2.13m)

Store Cupboard

13'6" (4.11m) x 3'1" (0.94m)

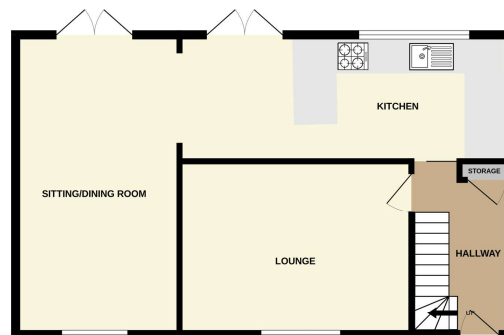
Bathroom

9'6" (2.9m) x 5'9" (1.75m)

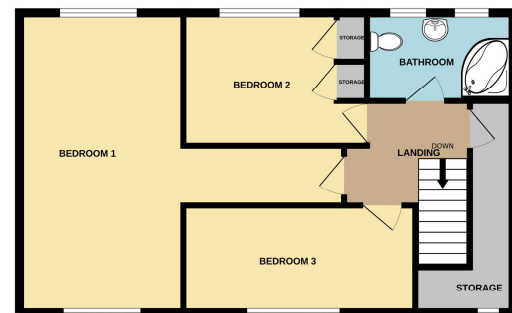




GROUND FLOOR



1ST FLOOR



Whilst every attempt has been made to ensure the accuracy of the floorplan contained here, measurements of doors, windows, rooms and any other items are approximate and no responsibility is taken for any error, omission or mis-statement. This plan is for illustrative purposes only and should be used as such by any prospective purchaser. The services, systems and appliances shown have not been tested and no guarantee as to their operability or efficiency can be given.
Made with Metropix ©2024

Contact Us: 0151 644 6000 lesley@lesleyhooks.co.uk 6 Church Road, Bebington, Wirral, Merseyside, CH63 7PH

Disclaimer: Whilst these details are thought to be correct, their accuracy cannot be guaranteed and do not form part of any contract. It should be noted that we have not tested any fixtures, fittings, equipment, apparatus or services, therefore we cannot verify that they are in working order of fit for purpose. Solicitors should be used to confirm that any moveable items described within these details are in fact part of the sale agreement. While we try to ensure measurements are correct they are not guaranteed and purchasers are advised to take their own measurements before ordering any fixtures and fittings. Please note: if you are buying a leasehold property, please ensure that all details and conditions of the lease are checked with your solicitor prior to you incurring any costs as additional fees could be incurred for items such as leasehold packs.