



Windsor Close, New Ferry

£100,000 offers over



LESLEY HOOKS
ESTATE AGENTS

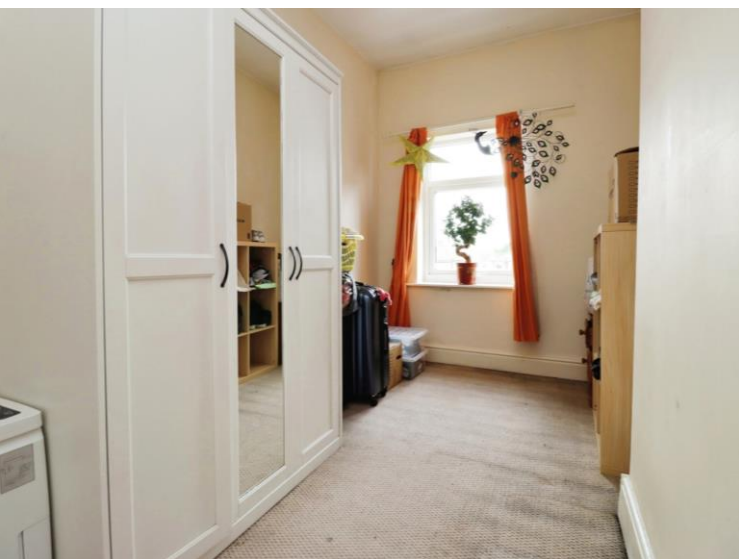




Welcome to this charming terraced property, a delightful find that is currently up for sale. This home is finished in a neutral decor, providing a pleasing canvas that invites you to add your own personal touches and truly make it your own. As you step inside, you'll find a welcoming reception room. Here, the warm and inviting space allows for comfortable living and is perfect for entertaining guests or simply unwinding after a busy day. Moving on to the kitchen, you'll be greeted by a wonderful open-plan layout. This space features an integrated dining area, making it the heart of the home where you can enjoy lovely meals with your loved ones. The kitchen is designed to make your culinary adventures enjoyable and hassle-free. The property boasts two well-appointed bedrooms, making it an excellent choice for couples or investors looking for a worthwhile addition to their portfolio. The first bedroom is a spacious double, offering ample room for all your belongings. The second bedroom is a single yet surprisingly spacious room, ideal as a guest room, study, or a cozy child's room. Completing the layout of this charming home is a large bathroom. Whether you want a quick shower to start your day or a long, relaxing bath to unwind, this bathroom has got you covered. Location is key, and this property certainly doesn't disappoint. With excellent public transport links, you'll find commuting a breeze. For families, the proximity to local schools is a definite advantage. Not to mention, local amenities are just a short stroll away, making daily errands easy and convenient. This property is an opportunity not to be missed. Its neutral decor, comfortable living spaces, and convenient location make it a perfect choice for couples seeking a home to settle in or investors looking for a great return on investment. So why wait? Get in touch today and let's turn this house into your new home.



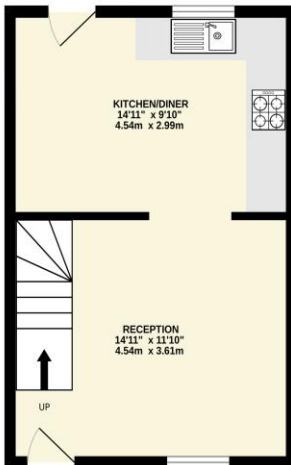
- Living Room**
11'10" (3.61m) x 14'11" (4.55m)
- Kitchen**
9'10" (3m) x 14'11" (4.55m) Max
- Bedroom One**
8'9" (2.67m) x 14'11" (4.55m)
- Bedroom Two**
13'0" (3.96m) x 7'2" (2.18m)
- Bathroom**
9'9" (2.97m) x 7'3" (2.21m)





GROUND FLOOR

1ST FLOOR



Whilst every attempt has been made to ensure the accuracy of the floorplan contained here, measurements of doors, windows, rooms and any other items are approximate and no responsibility is taken for any error, omission or mis-statement. This plan is for illustrative purposes only and should be used as such by any prospective purchaser. The furniture, systems and appliances shown have not been tested and no guarantee as to their operability or efficiency can be given.
Made with Metropix ©2024

Contact Us:

0151 644 6000

lesley@lesleyhooks.co.uk

6 Church Road, Bebington,

Wirral, Merseyside, CH63 7PH

Disclaimer: Whilst these details are thought to be correct, their accuracy cannot be guaranteed and do not form part of any contract. It should be noted that we have not tested any fixtures, fittings, equipment, apparatus or services, therefore we cannot verify that they are in working order of fit for purpose. Solicitors should be used to confirm that any moveable items described within these details are in fact part of the sale agreement. While we try to ensure measurements are correct they are not guaranteed and purchasers are advised to take their own measurements before ordering any fixtures and fittings. Please note: if you are buying a leasehold property, please ensure that all details and conditions of the lease are checked with your solicitor prior to you incurring any costs as additional fees could be incurred for items such as leasehold packs.