



15 Laurel Terrace

Holywell, Whitley Bay NE25 0ND

- Stunning ground floor flat
- Quality fitted Kitchen
 - Superb Bathroom
- Popular village location
 - No upper chain
- 16Ft Lounge
- Two Bedrooms
 - Rear Yard
- Immaculate condition throughout
- Viewing Recommended

£129,950





A truly splendid ground floor flat situated in the popular village of Holywell, close to all amenities including shops, schools, bus routes and within short distance of the Northumberland Train line for commuting to Newcastle.

This property must be viewed to appreciate the quality of accommodation on offer to include: Reception Hallway, 16Ft Lounge, quality fitted kitchen with built in oven and hob, Two bedrooms (one with fitted robes), superb fitted bathroom with White suite, externally there is a rear yard.

Also benefiting from gas ventral heating, UPVC double glazing and No upper chain.



Entrance Lobby

Lounge

16'2 x 12'5

Kitchen

12'10 x 8'9

Bedroom 1

16'2 x 13'0

Bedroom 2

12'9 x 7'11

Bathroom/WC

9'4 x 4'11

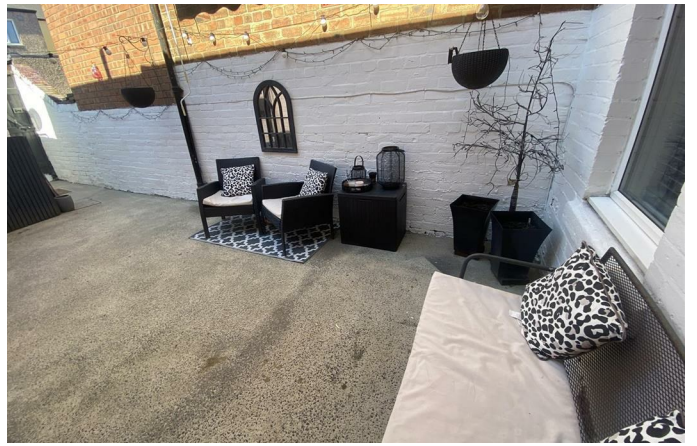
Disclaimer

ML Estates Ltd endeavour to maintain accurate descriptions of properties in Virtual Tours, Brochures, Floor Plans and descriptions, however, these are intended only as a guide and purchasers must satisfy themselves by personal inspection. All rooms have been measured with electronic laser and are approximate measurements only. None of the services to the above property have been tested by ourselves, and we cannot guarantee that the installations described in the details are in perfect working order.

ML Estates for themselves, the vendors or lessors, produce these brochures in good faith and are a guideline only. They do not constitute any part of a contract and are correct to the best of our knowledge at the time of going to press. Pictures may appear distorted due to enlargement and are not to be used to give an accurate reflection of size. All negotiations and payments are subject to contract.


The Tenure of the property should be clarified by your legal representative prior to exchange of contracts.








Local Authority nORTHUMBERLAND cOUNCIL
Council Tax Band A
EPC Rating
Tenure Leasehold

Energy Efficiency Rating		
	Current	Potential
Very energy efficient - lower running costs		
(92 plus) A		
(81-91) B		
(69-80) C		
(55-68) D		
(39-54) E		
(21-38) F		
(1-20) G		
Not energy efficient - higher running costs		
England & Wales	EU Directive 2002/91/EC	

Environmental Impact (CO ₂) Rating		
	Current	Potential
Very environmentally friendly - lower CO2 emissions		
(92 plus) A		
(81-91) B		
(69-80) C		
(55-68) D		
(39-54) E		
(21-38) F		
(1-20) G		
Not environmentally friendly - higher CO2 emissions		
England & Wales	EU Directive 2002/91/EC	



ML Estates Sales Office

27 Avenue Road, Seaton Delaval, Tyne
And Wear, NE25 0DT

Contact

0191 237 60 60
sd@mlestates.co.uk
www.mlestates.co.uk/

Agents Note: Whilst every care has been taken to prepare these particulars, they are for guidance purposes only. All measurements are approximate and for general guidance purposes only and whilst every care has been taken to ensure accuracy, they should not be relied upon and potential buyers/tenants are advised to recheck the measurements.